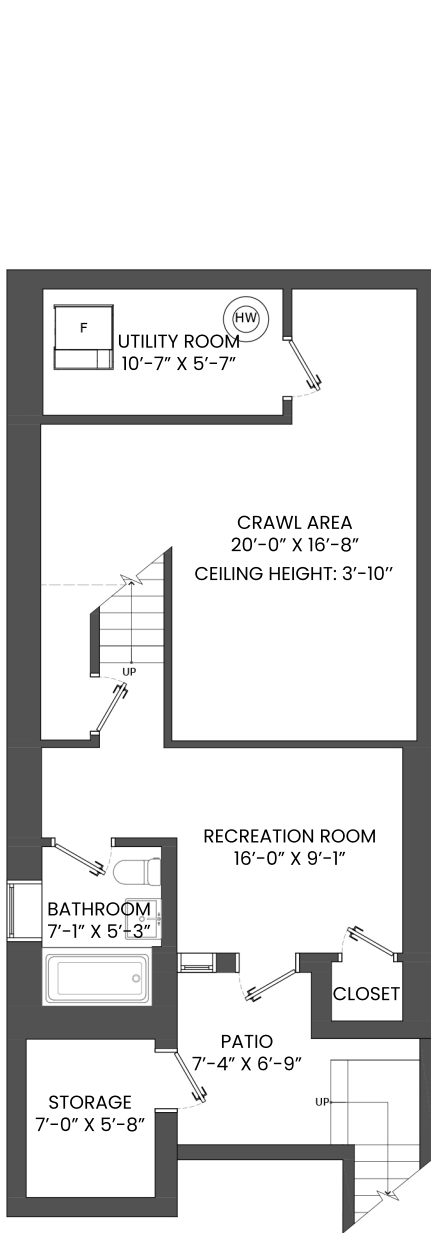
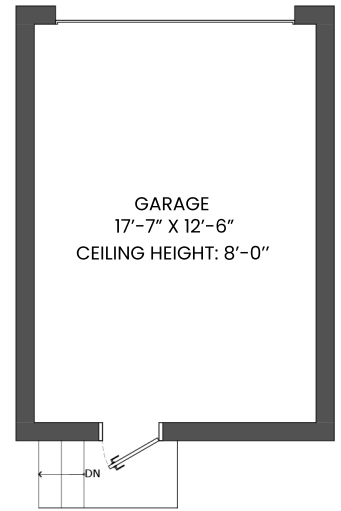
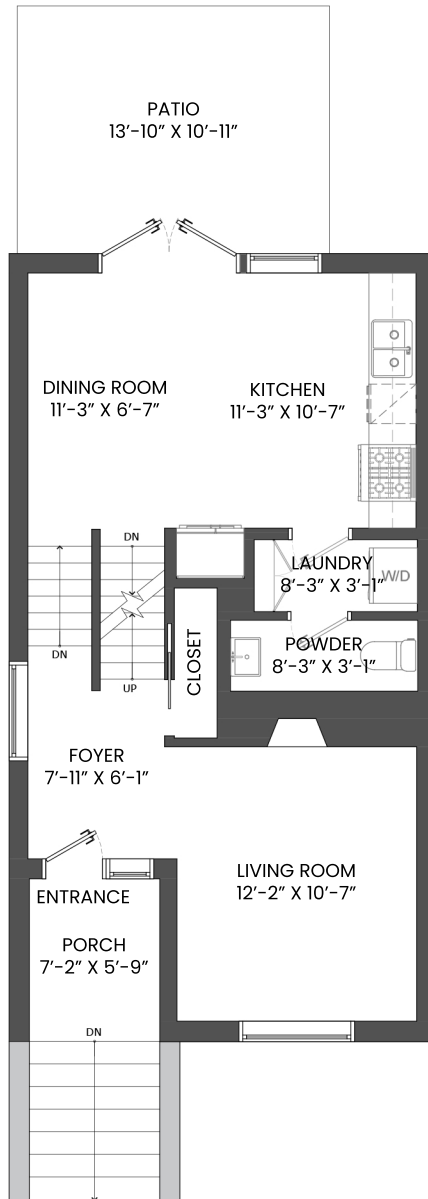


4132 BEATRICE STREET, VANCOUVER, BC

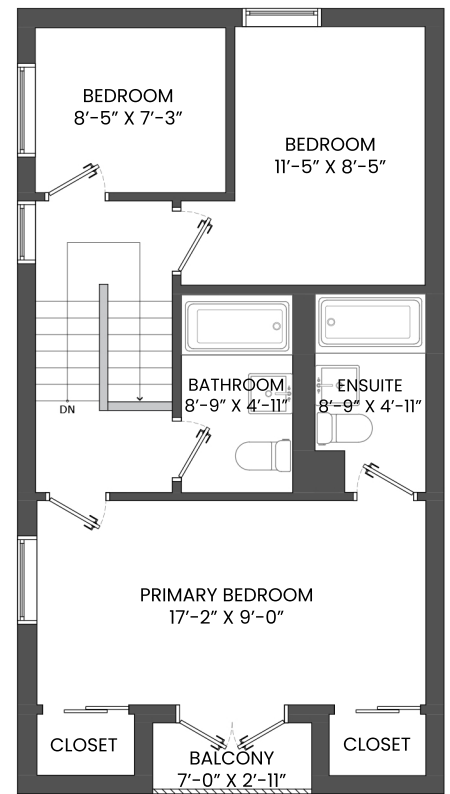
LOWER FLOOR TOTAL:	264 SQ.FT.	CRAWL AREA:	364 SQ. FT.
MAIN FLOOR TOTAL:	611 SQ.FT.	GARAGE:	271 SQ. FT.
UPPER FLOOR TOTAL:	634 SQ.FT.	PATIO:	200 SQ. FT.
TOTAL:	1,509 SQ.FT.	STORAGE:	59 SQ. FT.
		PORCH:	41 SQ. FT.
		BALCONY:	20 SQ. FT.



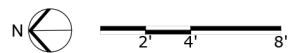
LOWER FLOOR PLAN
Ceiling Height: 7'-10"



MAIN FLOOR PLAN
Ceiling Height: 8'-10"



UPPER FLOOR PLAN
Ceiling Height: 9'-0"



KELSIE & MORGAN

REAL ESTATE GROUP

www.KelsieAndMorgan.com

