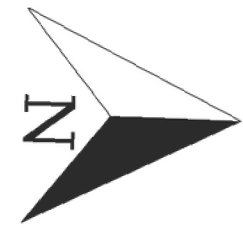
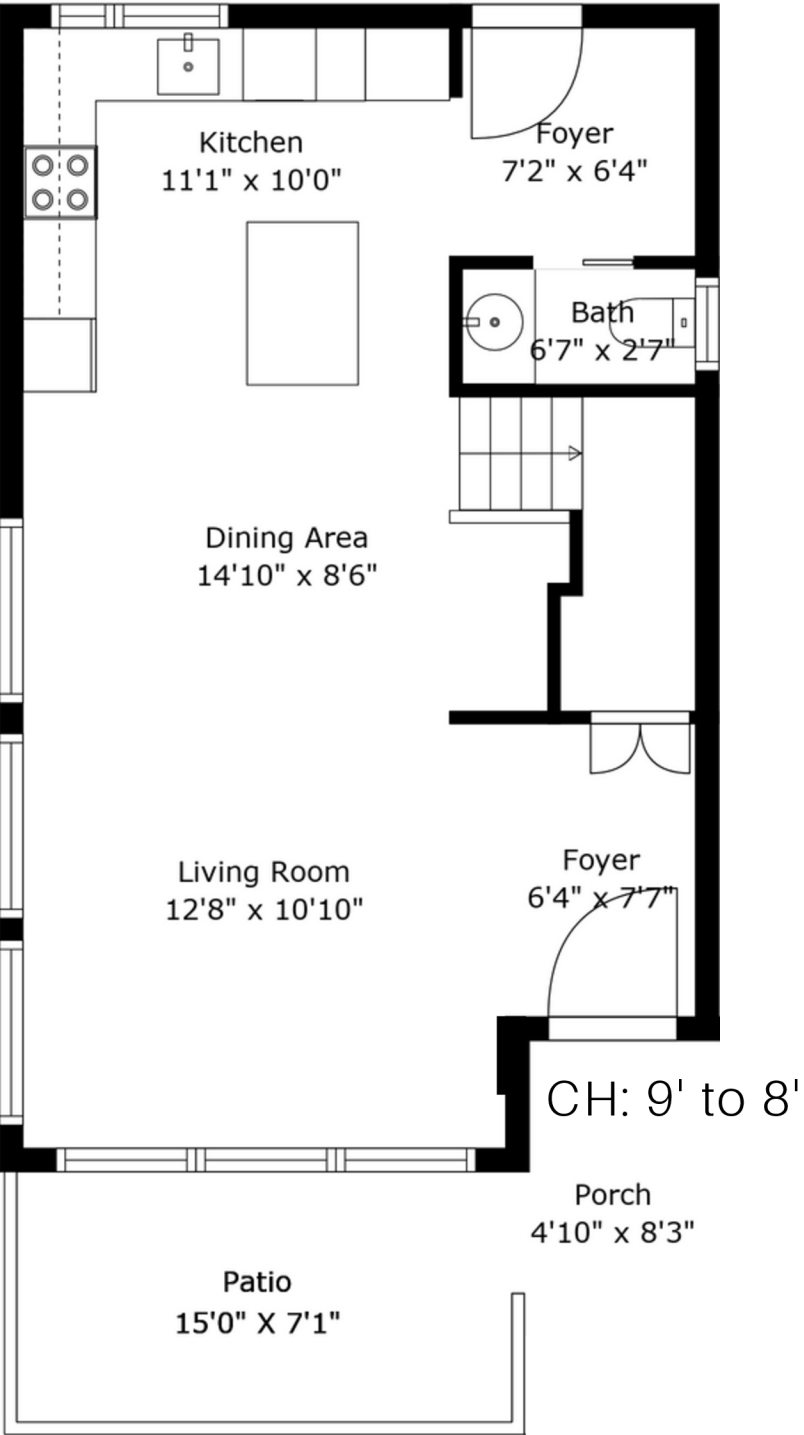


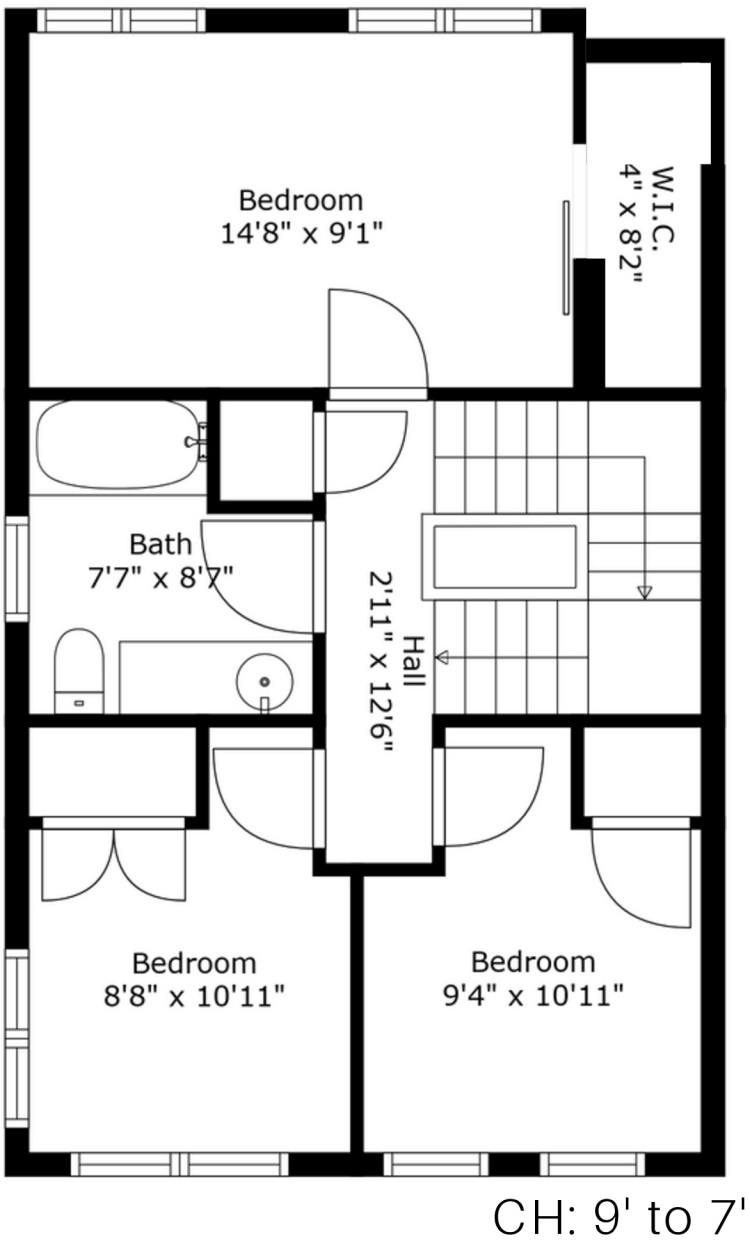
TH5 2137 Chesterfield,
North Vancouver, BC



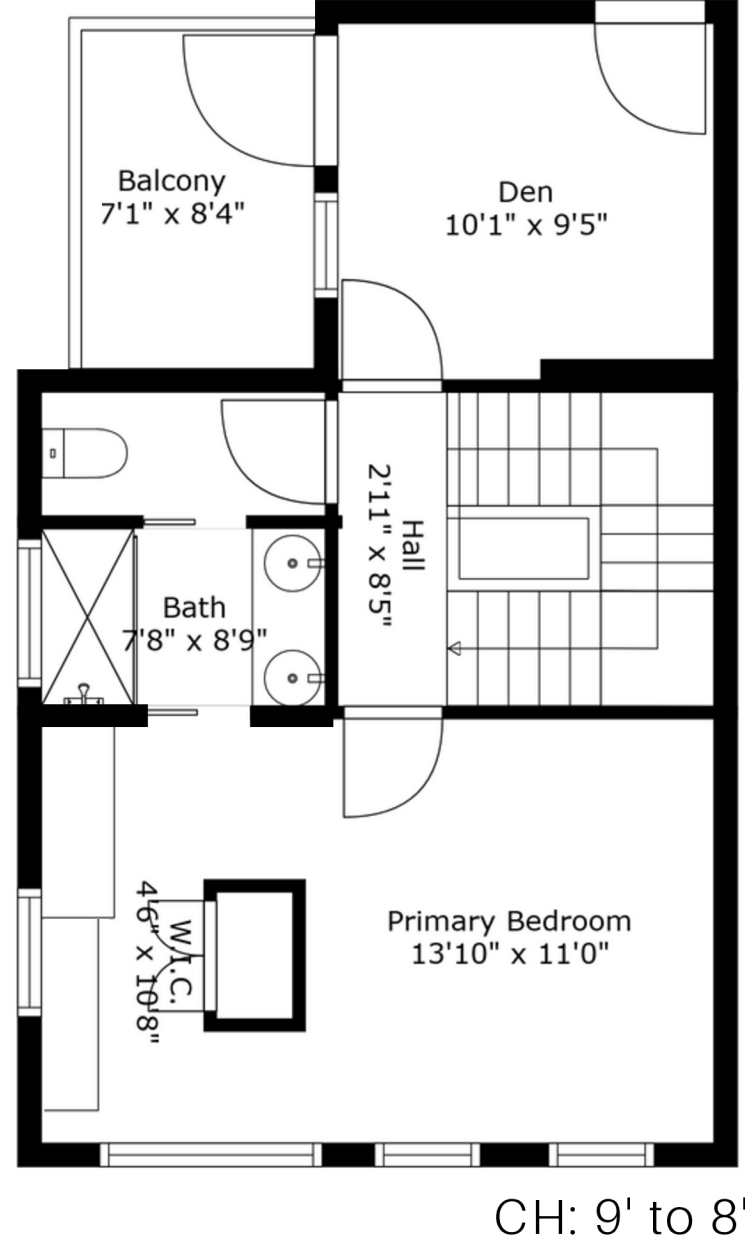
Main



Second



Third



Third	531 SQ.FT
Second	611 SQ.FT
Main	593 SQ.FT

Excluded Area(s):		Balcony	59 SQ.FT
	Porch	Patio	106 SQ.FT

Total 1735 SQ.FT

Total 504 SQ.FT

Measurements, features, and dimensions are an approximate, and are for illustrative purposes only. Measurements, features, and dimensions should not be used for any construction purposes. Actual measurements may vary. Total Square Footage may include low-height ceilings, unheated rooms, and room labels may not be accurate and is an approximate. The floor plan may not be to scale. We release all liability. Buyer to verify. E&O Insured

