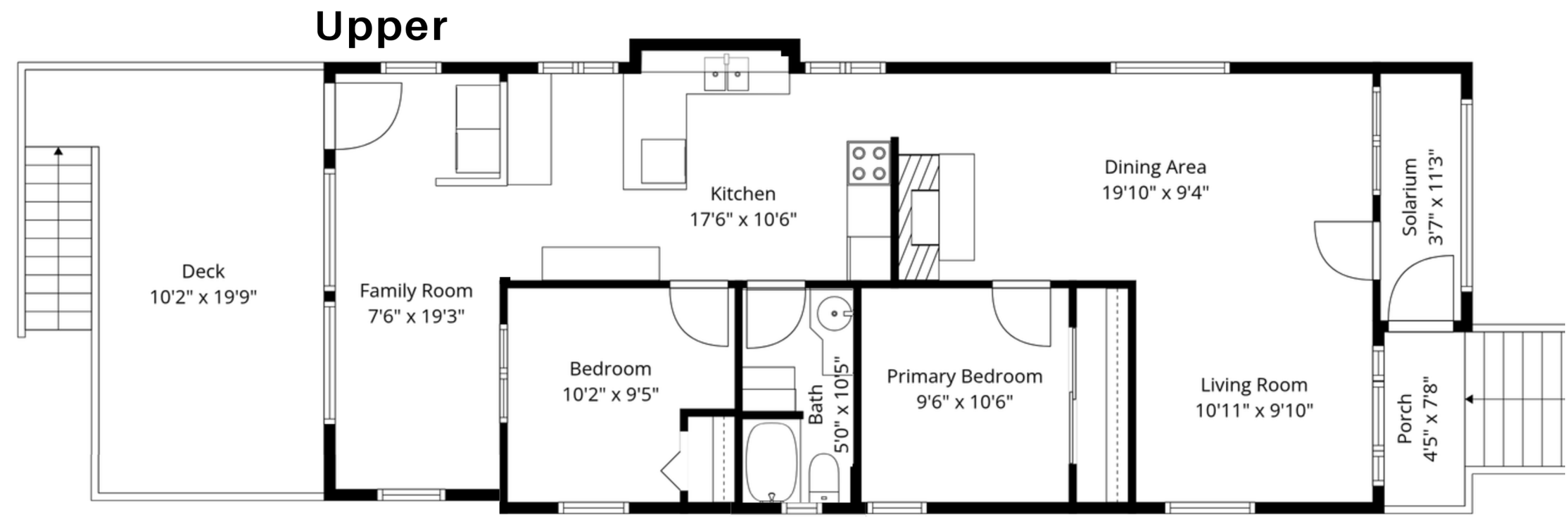
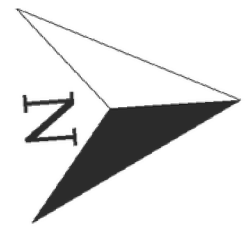
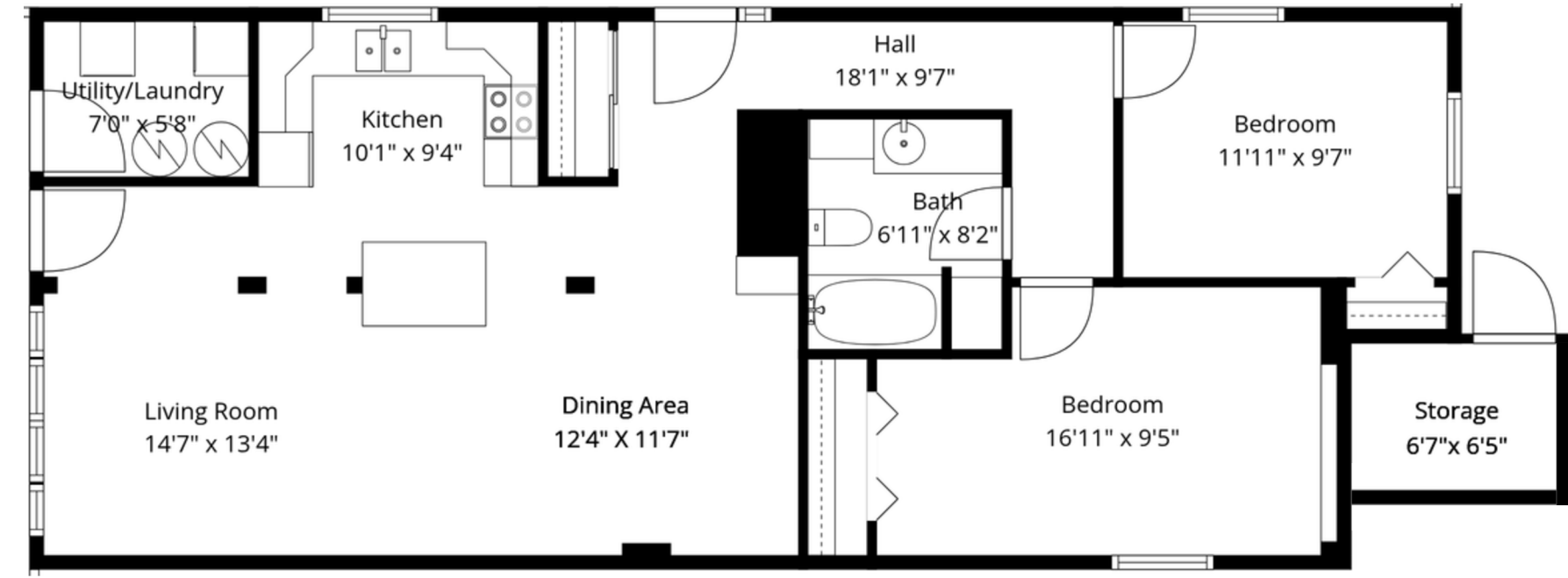


1944 Charles St, Vancouver, BC



CH: 8'9" to 8'

Lower



CH: 7'3" to 6'3"

Excluded Area(s):

Upper	983 SQ.FT	Porch	34 SQ.FT	Solarium	40 SQ.FT
Lower	1034 SQ.FT	Deck	201 SQ.FT	Storage	42 SQ.FT

Total 2017 SQ.FT **Total 317 SQ.FT**



Measurements, features, and dimensions are an approximate, and are for illustrative purposes only. Measurements, features, and dimensions should not be used for any construction purposes. Actual measurements may vary. Total Square Footage may include low-height ceilings, unheated rooms, and room labels may not be accurate and is an approximate. The floor plan may not be to scale. We release all liability. Buyer to verify. E&O Insured