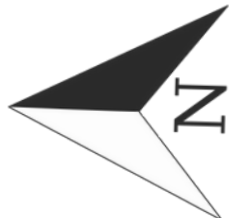
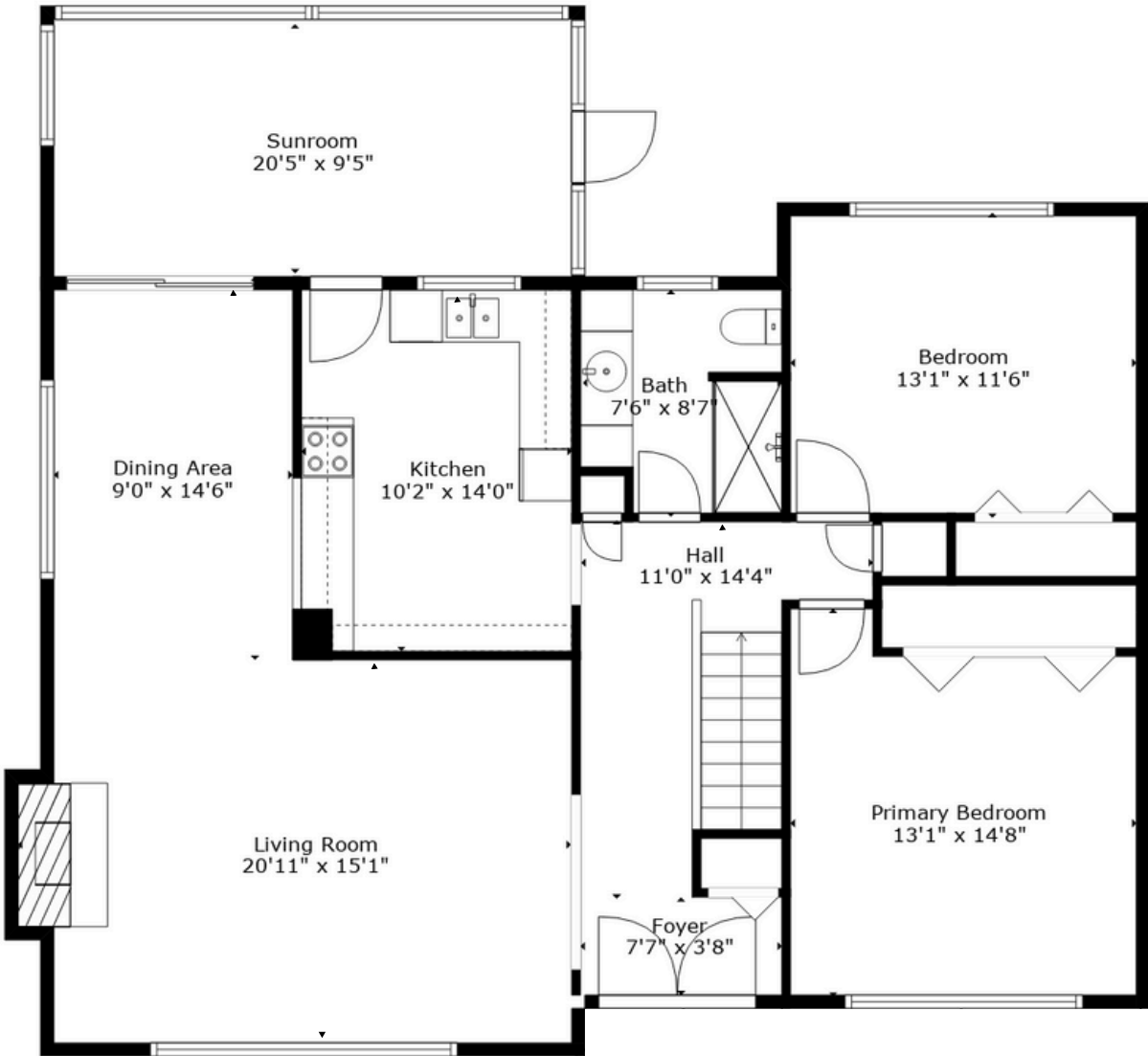


2328 William Ave, North Vancouver, BC

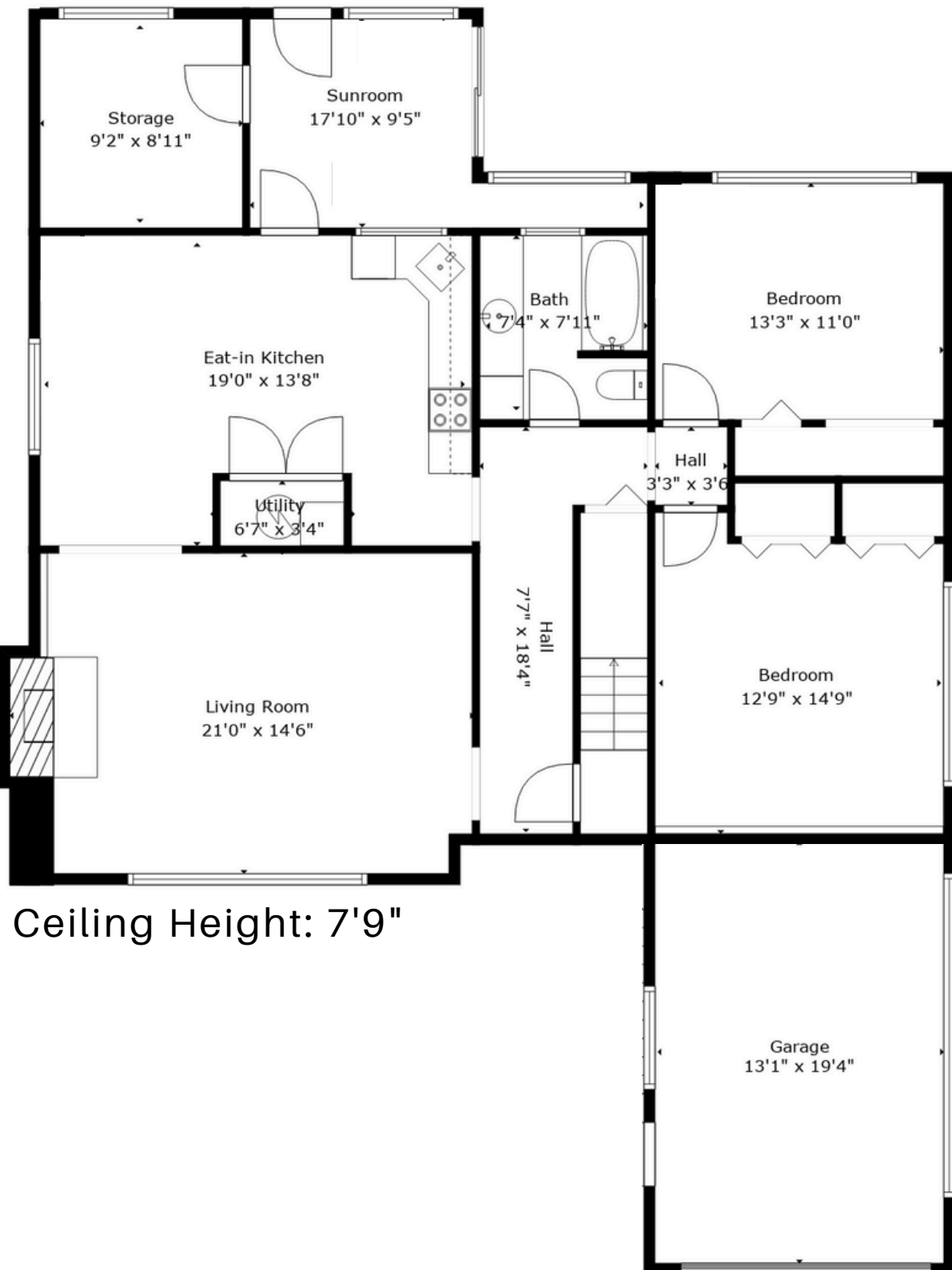


Main



Ceiling Height: 8'0"

Basement



Ceiling Height: 7'9"

Excluded areas	
Storage	96 SQ.FT
Garage	289 SQ.FT
Sunrooms	343 SQ.FT
Total	728 SQ.FT

Main	1236 SQ.FT
Basement	1258 SQ.FT
Total	2494 SQ.FT

Measurements, features, and dimensions are an approximate, and are for illustrative purposes only. Measurements, features, and dimensions should not be used for any construction purposes. Actual measurements may vary. Total Square Footage may include low-height ceilings, unheated rooms, and room labels may not be accurate and is an approximate. The floor plan may not be to scale. We release all liability. E&O Insured