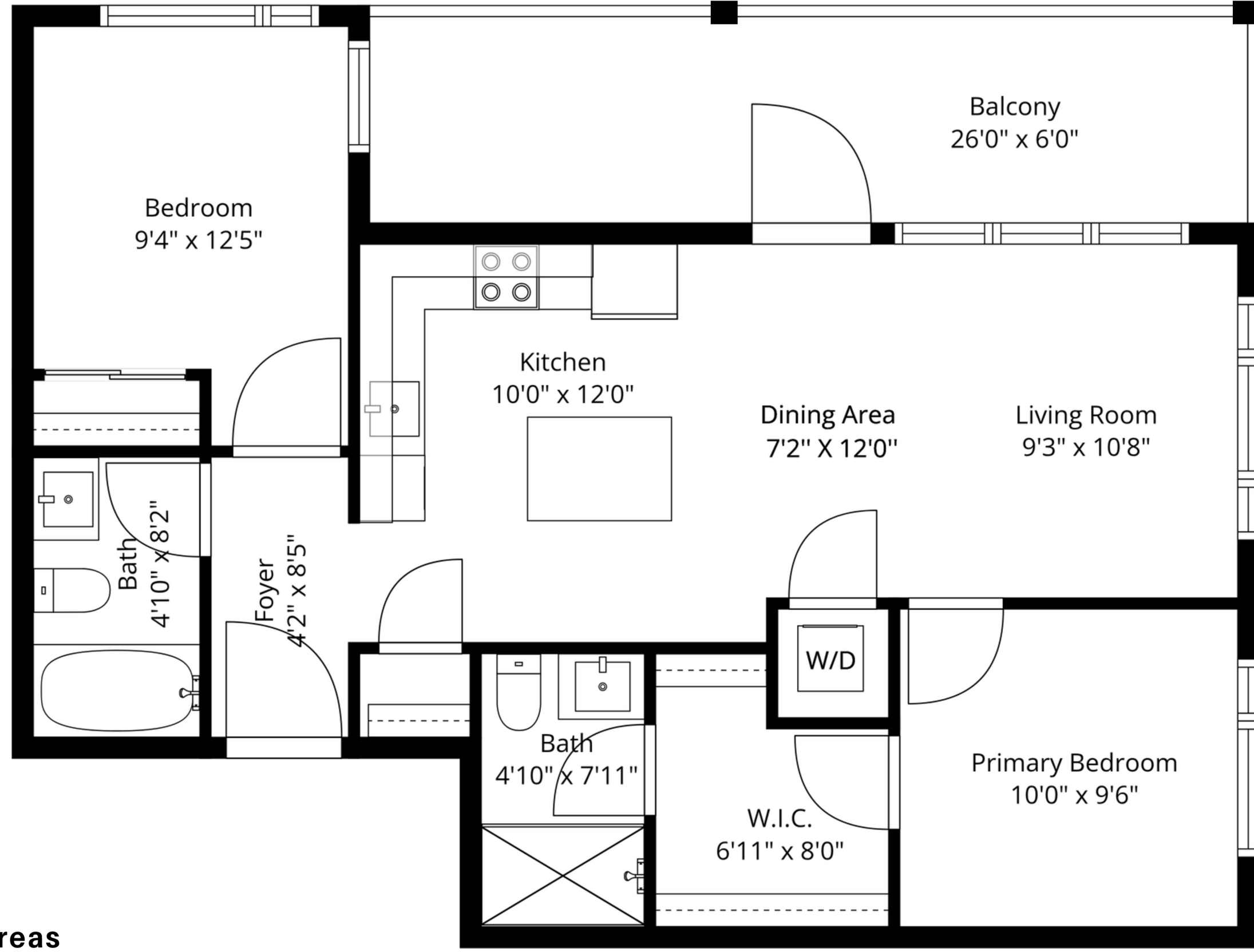


#513 3596 Malsum Dr,  
**North Vancouver, BC**



**Excluded areas**

Main	813 SQ.FT	Balcony	156 SQ.FT
<b>Total</b>	<b>813 SQ.FT</b>	<b>Total</b>	<b>156 SQ.FT</b>

Ceiling Height: 9' to 8'



Measurements, features, and dimensions are an approximate, and are for illustrative purposes only. Measurements, features, and dimensions should not be used for any construction purposes. Actual measurements may vary. Total Square Footage may include low-height ceilings, unheated rooms, and room labels may not be accurate and is an approximate. The floor plan may not be to scale. We release all liability. Buyer to Verify. E&O Insured TOTAL SQUARE FOOTAGE AS PER STRATA PLAN