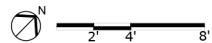
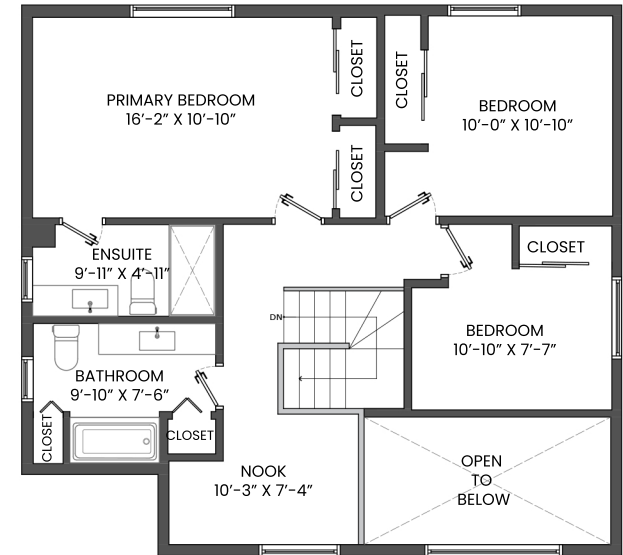
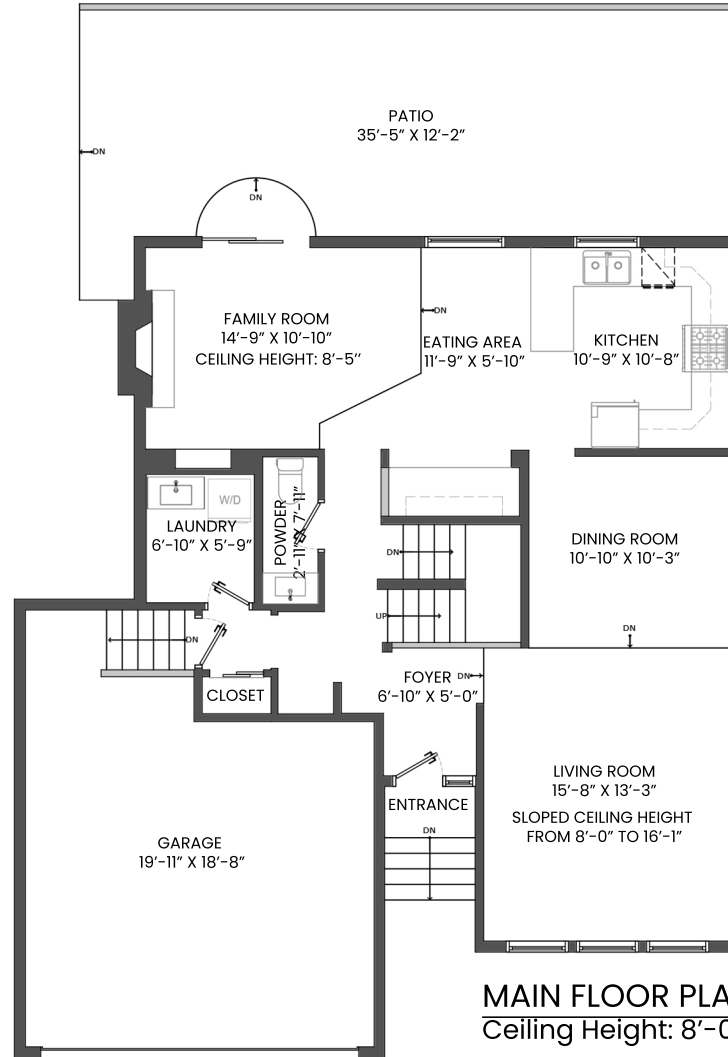
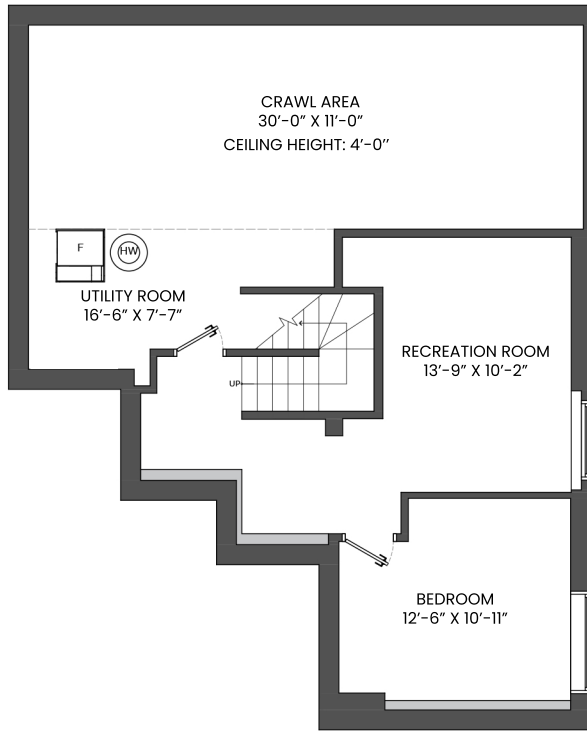


# 1613 HEMLOCK PLACE, PORT MOODY, BC

LOWER FLOOR TOTAL: 507 SQ.FT. CRAWL AREA: 445 SQ. FT.  
 MAIN FLOOR TOTAL: 1,027 SQ.FT. PATIO: 440 SQ. FT.  
 UPPER FLOOR TOTAL: 841 SQ.FT. GARAGE: 426 SQ. FT.  
**TOTAL: 2,375 SQ.FT. UTILITY ROOM: 130 SQ. FT.**



## KELSIE & MORGAN

REAL ESTATE GROUP

[www.KelsieAndMorgan.com](http://www.KelsieAndMorgan.com)