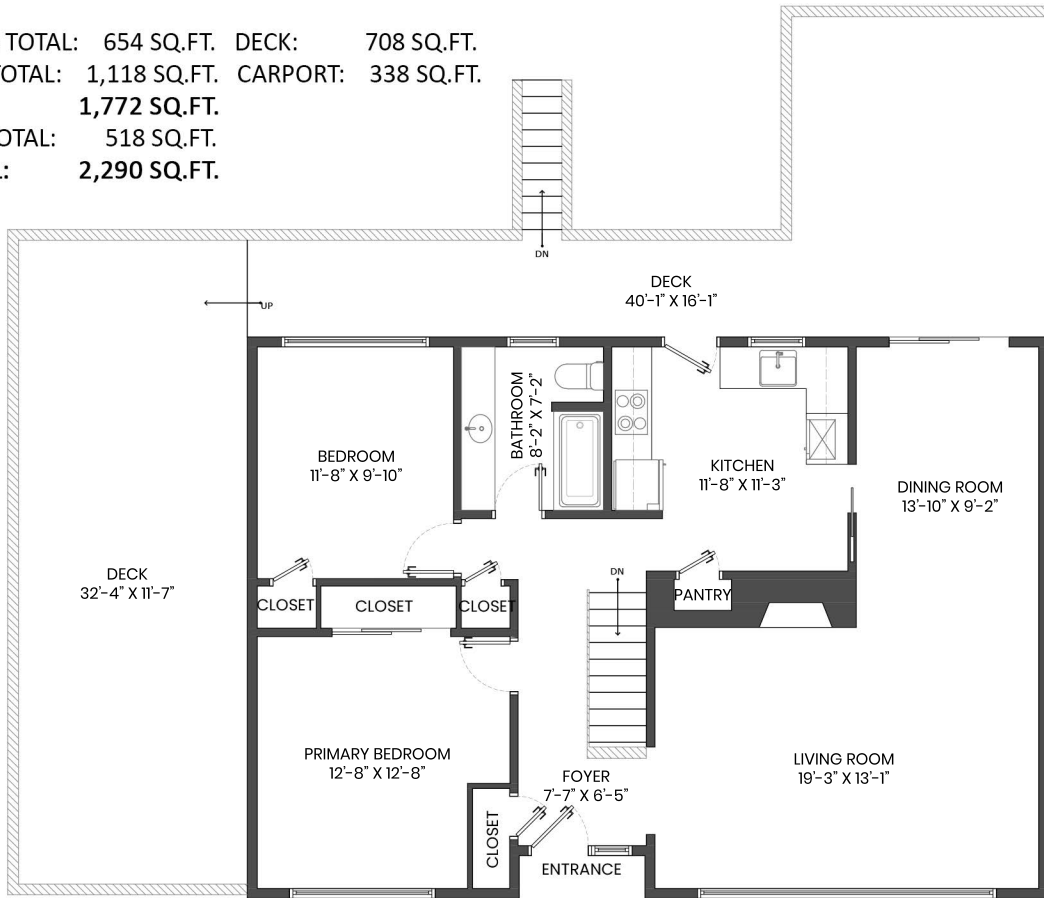
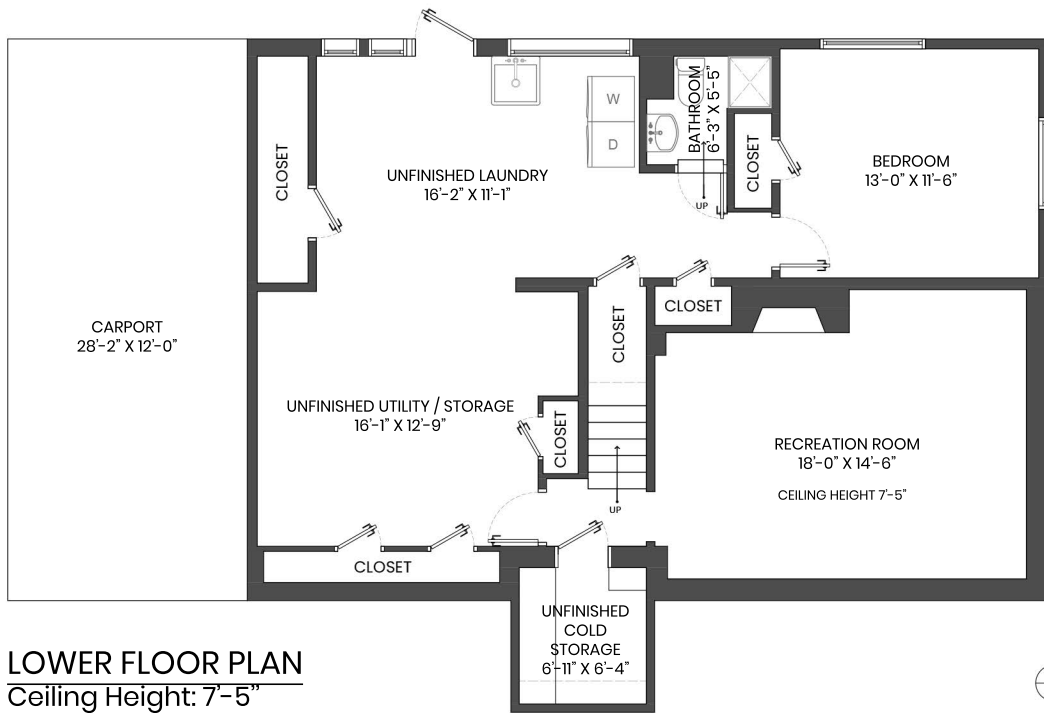


2649 STANDISH DRIVE, NORTH VANCOUVER, BC

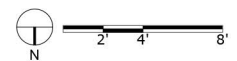
LOWER FLOOR TOTAL: 654 SQ.FT. DECK: 708 SQ.FT.
 MAIN FLOOR TOTAL: 1,118 SQ.FT. CARPORT: 338 SQ.FT.
TOTAL: 1,772 SQ.FT.
 UNFINISHED TOTAL: 518 SQ.FT.
GRAND TOTAL: 2,290 SQ.FT.



MAIN FLOOR PLAN
 Ceiling Height: 7-10"



LOWER FLOOR PLAN
 Ceiling Height: 7-5"



KELSIE & MORGAN

REAL ESTATE GROUP

www.KelsieAndMorgan.com

