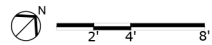
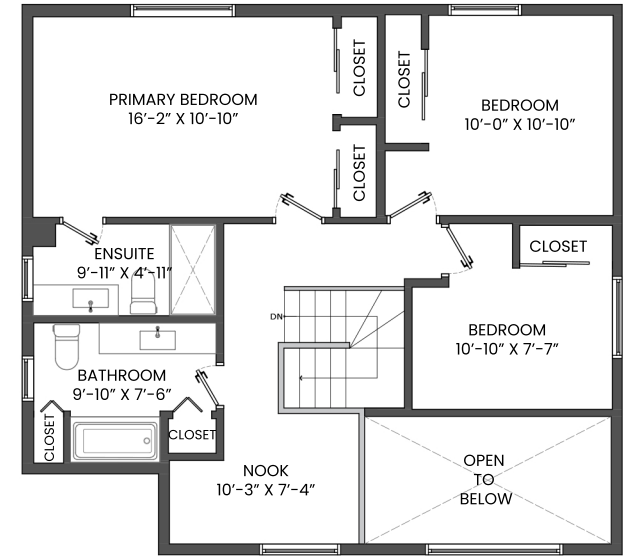
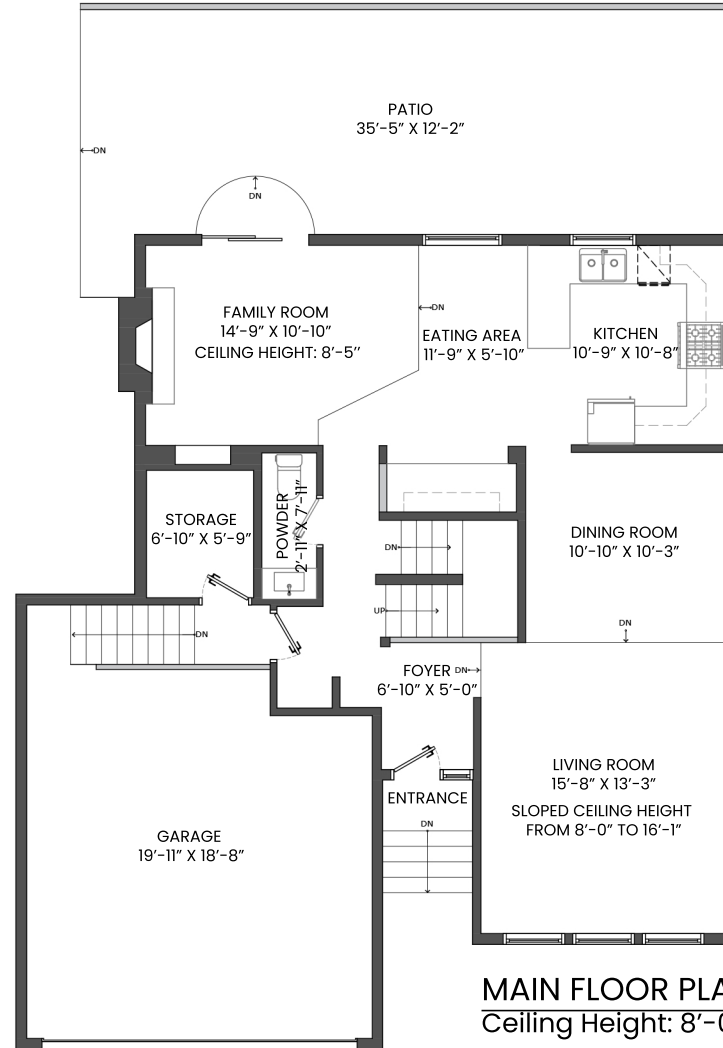
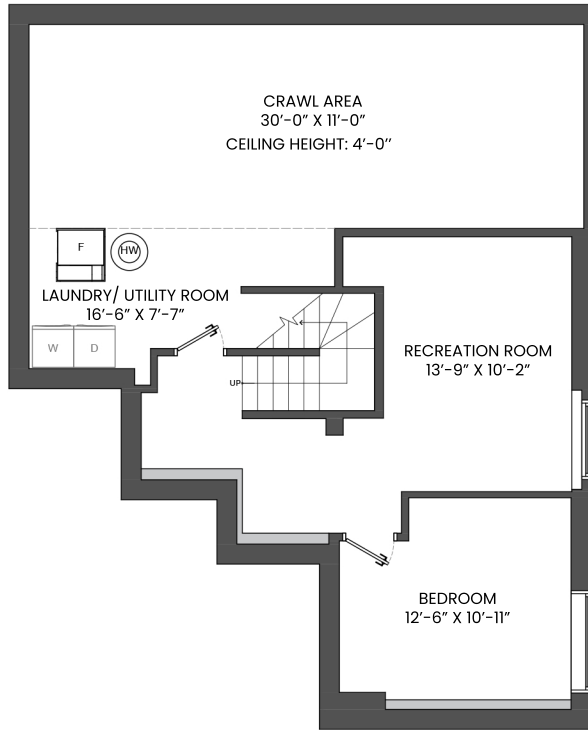


1613 HEMLOCK PLACE, PORT MOODY, BC

LOWER FLOOR TOTAL: 550 SQ.FT. GARAGE: 443 SQ. FT.
 MAIN FLOOR TOTAL: 965 SQ.FT. STORAGE: 44 SQ. FT.
 UPPER FLOOR TOTAL: 841 SQ.FT. PATIO: 440 SQ. FT.
TOTAL: 2,356 SQ.FT. CRAWL AREA: 445 SQ. FT.



KELSIE & MORGAN

REAL ESTATE GROUP

www.KelsieAndMorgan.com

* PERSONAL REAL ESTATE CORPORATION. THE FLOOR PLAN ILLUSTRATION IS NOT SUITABLE FOR CONSTRUCTION/ ARCHITECTURAL PURPOSES. MEASUREMENTS ARE APPROXIMATE AND MAY NOT BE TO SCALE. E&O INSURED.
 FLOOR PLAN DESIGNED BY ISHOT.CA ENTERPRISES INC. 604-368-7979 ISHOT.CA

