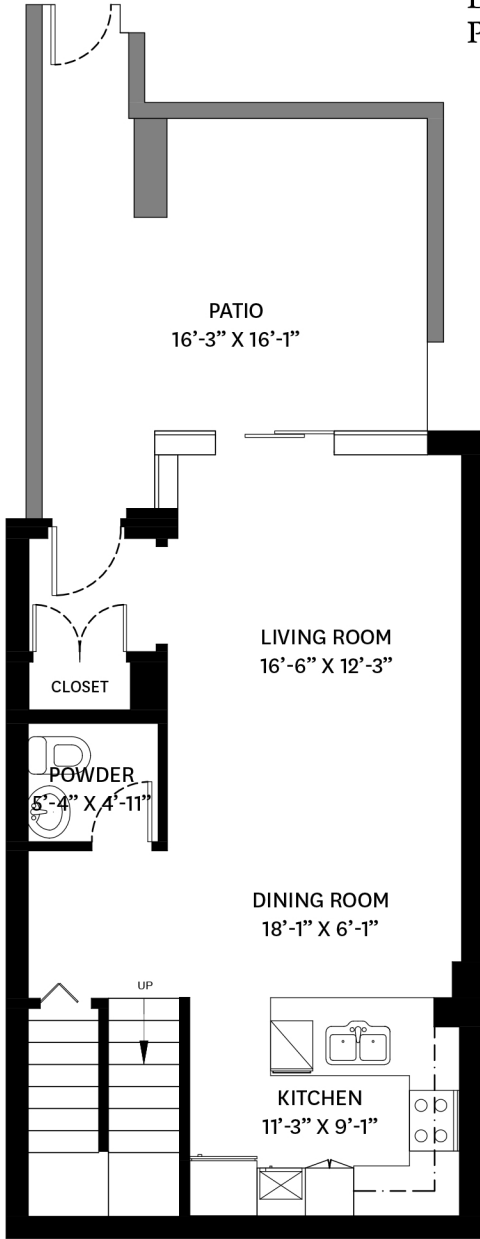


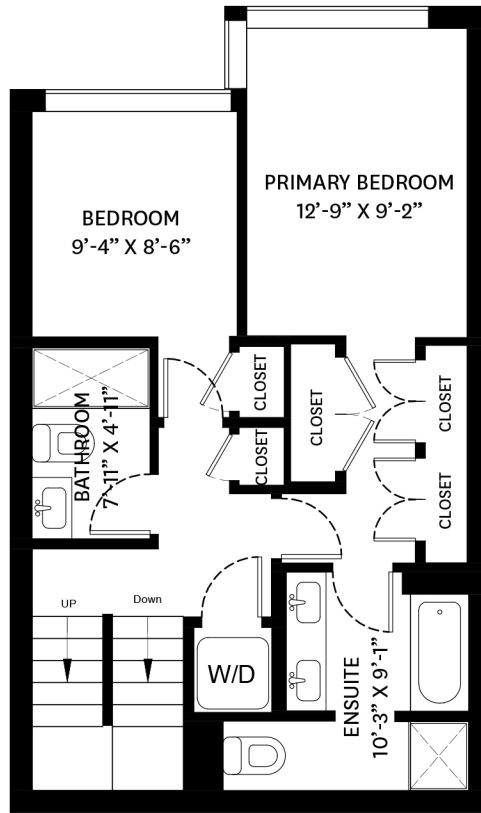
# 1313 CIVIC PLACE MEWS, NORTH VANCOUVER, BC

MAIN FLOOR TOTAL: 620 SQ.FT.  
 UPPER FLOOR TOTAL: 612 SQ.FT.  
 UPPER FLOOR TOTAL: 95 SQ.FT.  
 TOTAL: 1,327 SQ.FT.

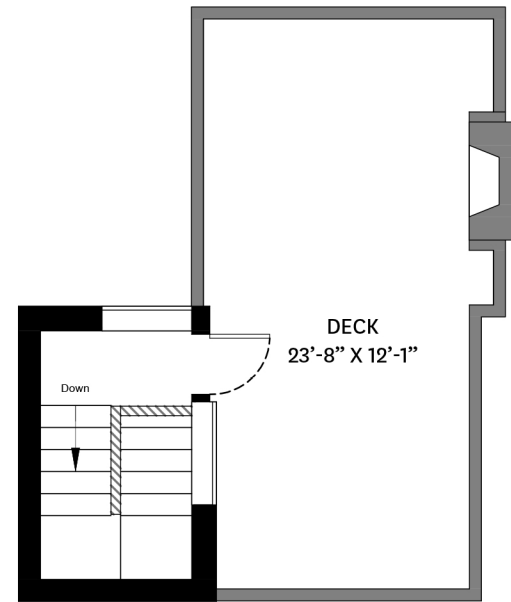
DECK: 263 SQ.FT.  
 PATIO: 242 SQ.FT.



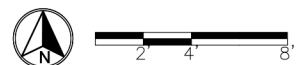
**MAIN FLOOR PLAN**  
 Ceiling Height: 8'-4"



**UPPER FLOOR PLAN**  
 Ceiling Height: 8'-4"



**UPPER FLOOR PLAN**  
 Ceiling Height: 7'-0"



## KELSIE & MORGAN

REAL ESTATE GROUP

[www.KelsieAndMorgan.com](http://www.KelsieAndMorgan.com)

floor plan designed by  
 ishot.ca Enterprises Inc.  
 604-368-7979  
<http://ishot.ca>