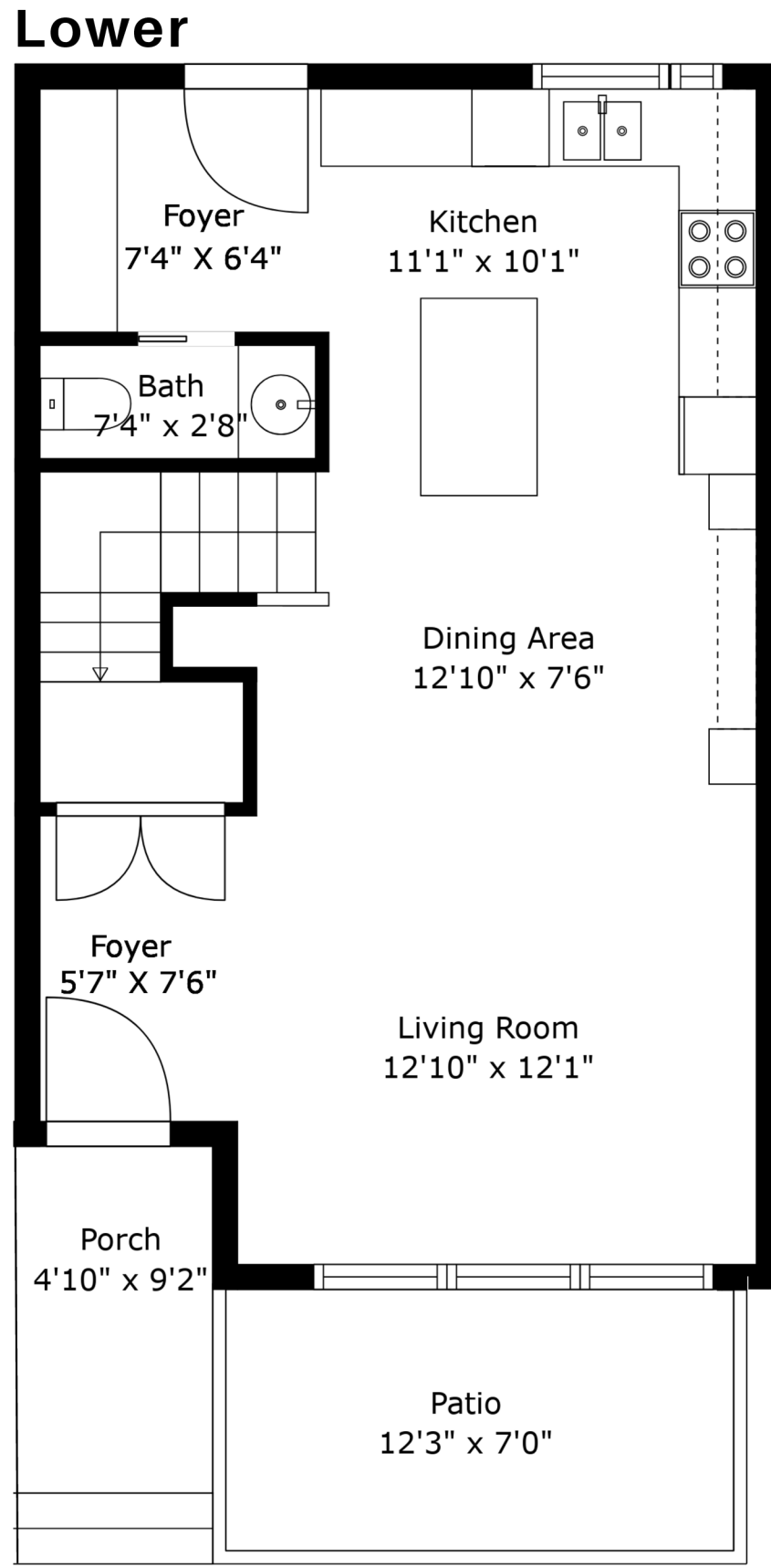
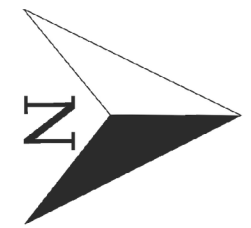
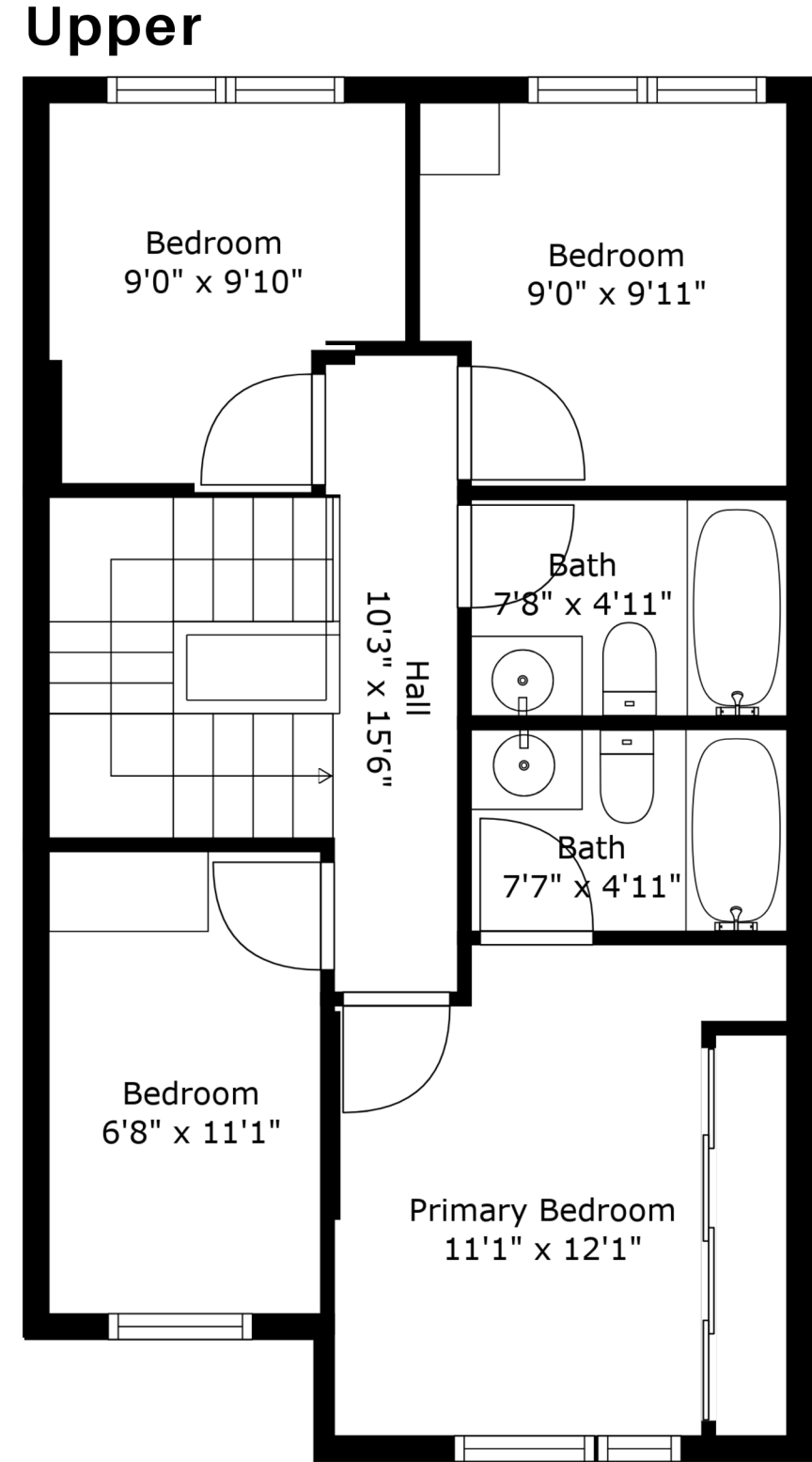


TH2 2137 Chesterfield Ave, North Vancouver, BC



Ceiling Height: 9'



Ceiling Height: 9' to 8'

		Excluded Area(s):	
Upper	645 SQ.FT	Patio	91 SQ.FT
Lower	594 SQ.FT	Porch	44 SQ.FT
Total	1239 SQ.FT	Total	135 SQ.FT

Measurements, features, and dimensions are an approximate, and are for illustrative purposes only. Measurements, features, and dimensions should not be used for any construction purposes. Actual measurements may vary. Total Square Footage may include low-height ceilings, unheated rooms, and room labels may not be accurate and is an approximate. The floor plan may not be to scale. We release all liability. E&O Insured Total square footage is as per strata.

