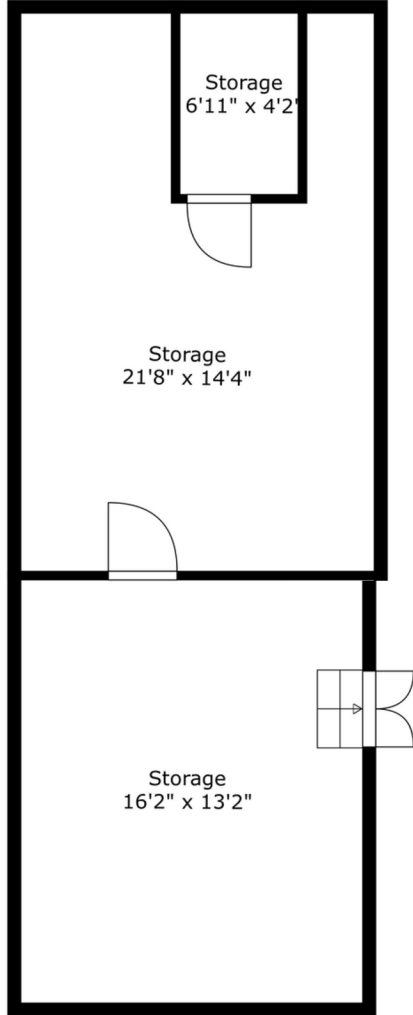


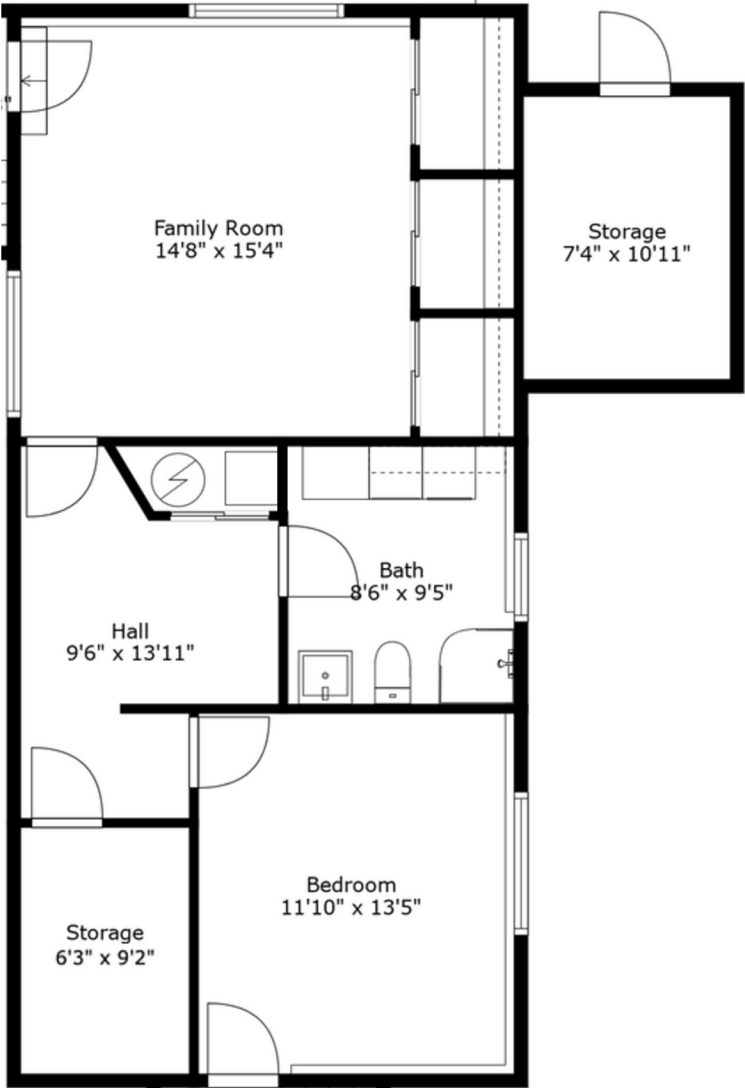
3336 Manning Cr,
North Vancouver, BC

Basement



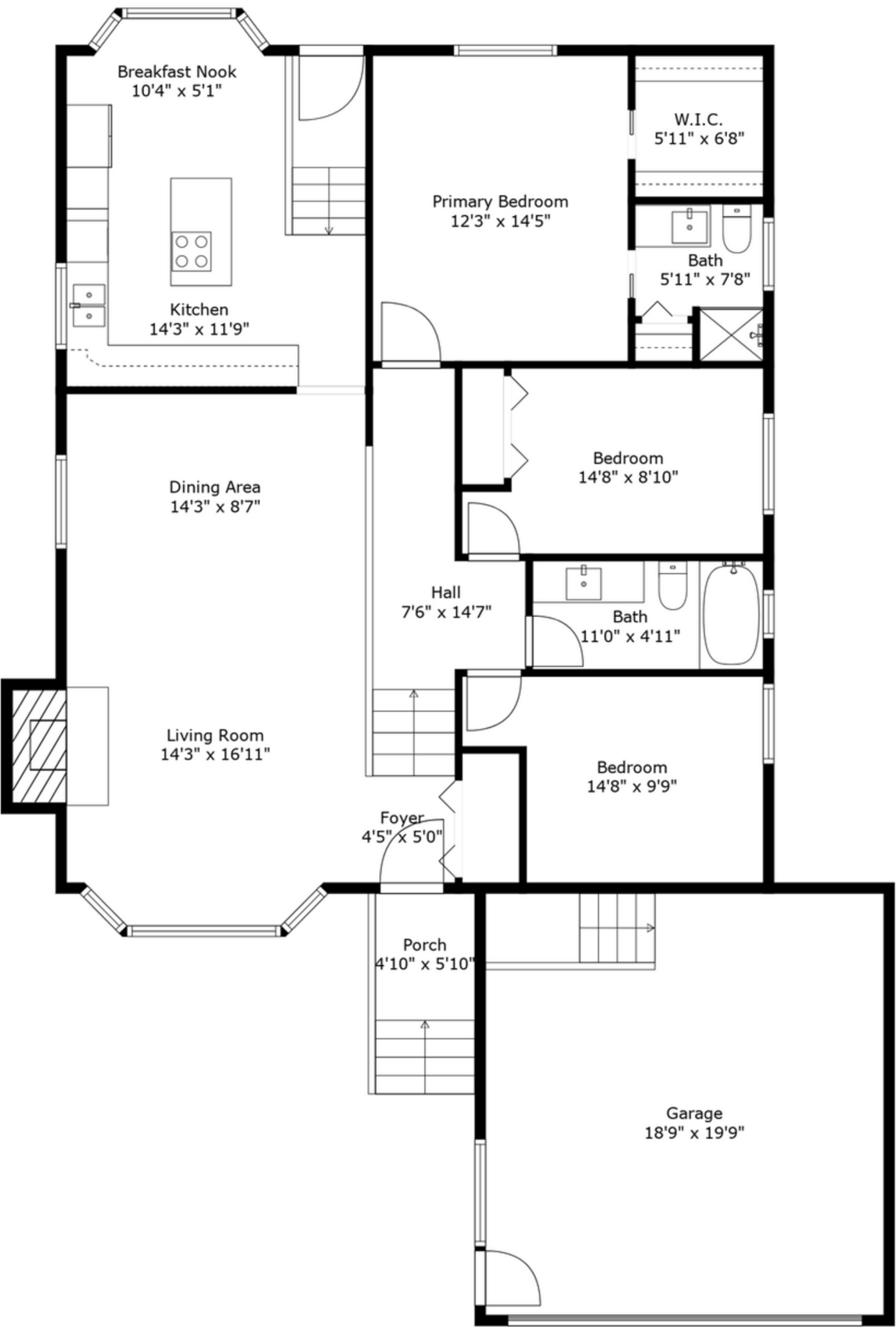
Ceiling Height: 6'2"

Lower



Ceiling Height: 8' to 7'

Main



Ceiling Height: 13'7" to 8'

				Basement Storage	531 SQ.FT
Main	1437 SQ.FT	Excluded Area(s):		Porch	28 SQ.FT
Lower	794 SQ.FT			Storage	80 SQ.FT
		Garage	370 SQ.FT		
Total	2231 SQ.FT	Total		639 SQ.FT	



Measurements, features, and dimensions are an approximate, and are for illustrative purposes only. Measurements, features, and dimensions should not be used for any construction purposes. Actual measurements may vary. Total Square Footage may include low-height ceilings, unheated rooms, and room labels may not be accurate and is an approximate. The floor plan may not be to scale. We release all liability. E&O Insured Total square footage is as per strata.