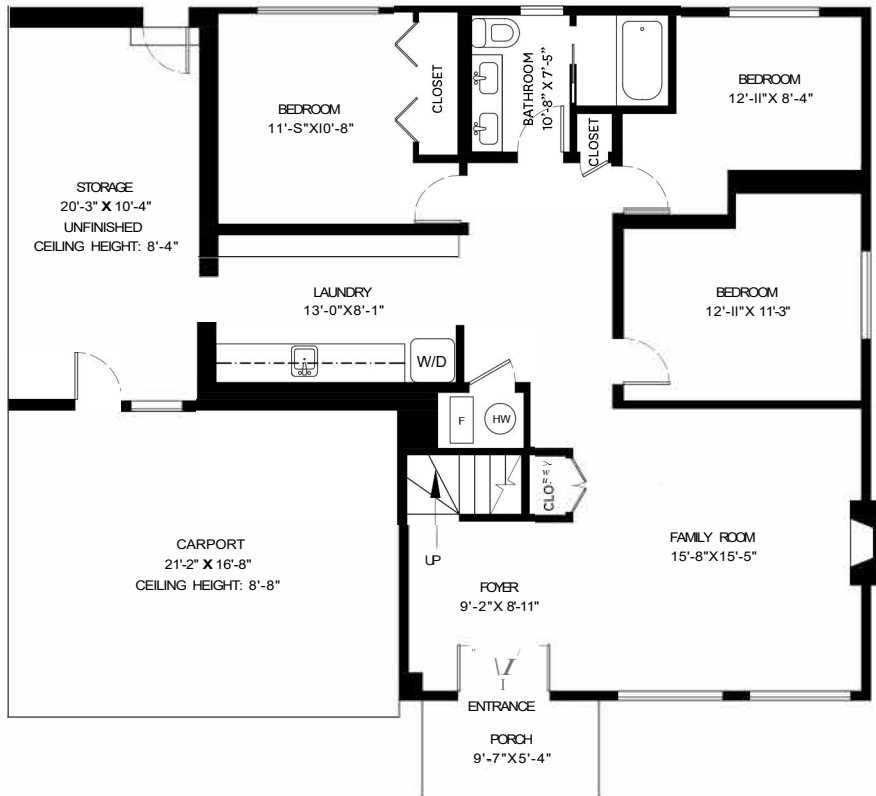
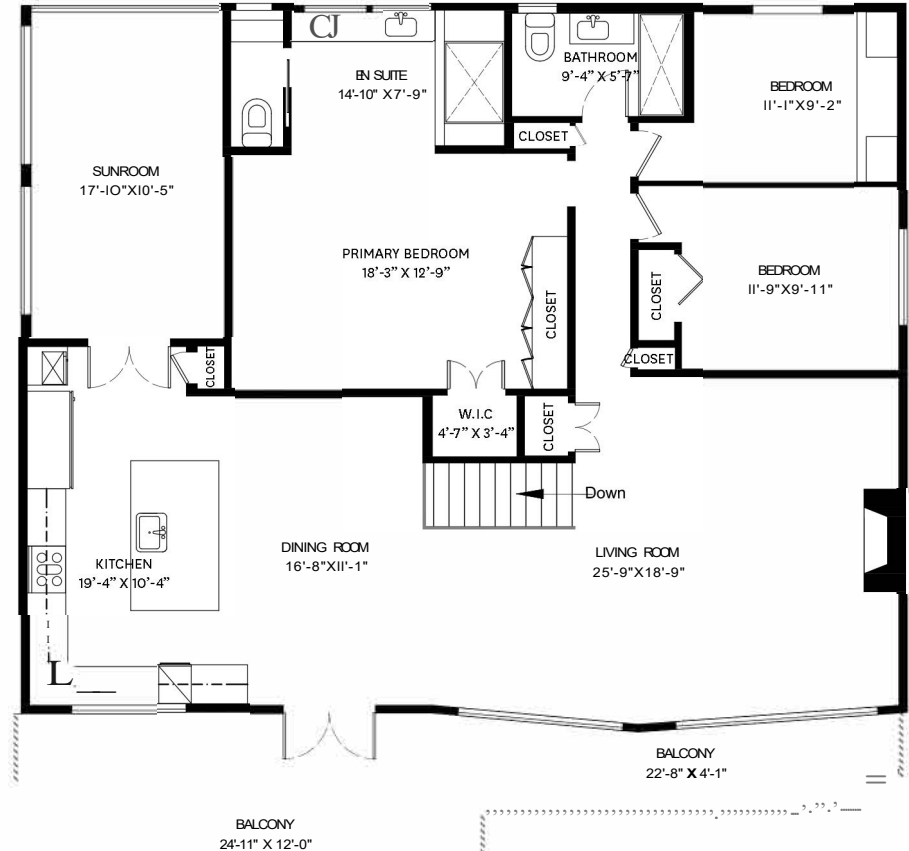


2732 BYRON PLACE, NORTH VANCOUVER, BC

LOWER FLOOR TOTAL:	1,199 SQ FT.	BALCONY:	378 SQ FT.
MAIN FLOOR TOTAL:	1,658 SQ FT.	CARPORT:	353 SQ FT.
SUNROOM:	187 SQ FT.	STORAGE:	226 SQ FT.
TOTAL:	3,044 SQ FT.	PORCH:	51 SQ FT.



LOWER FLOOR PLAN
Ceiling Height: 7'-8"



MAIN FLOOR PLAN
Ceiling Height: 8'-0"

KELSIE & MORGAN

REAL ESTATE GROUP

www.KelsieAndMorgan.com



floor plan designed by
 ishot.ca Enterprises Inc,
 604-368-7979
<http://ishot.ca>