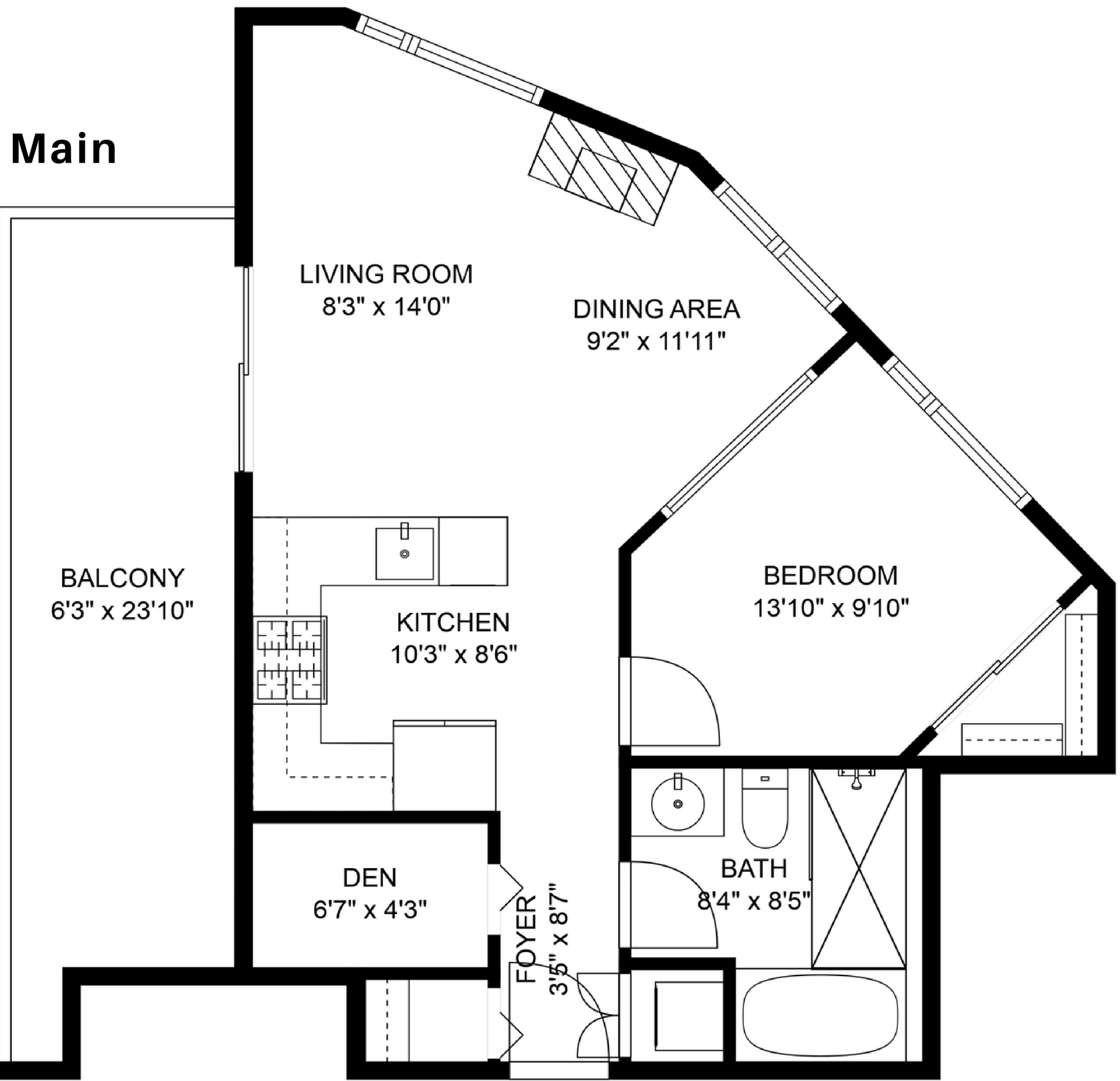


3201 501 Pacific St,
Vancouver, BC



Main		Excluded areas	
Main	614 SQ.FT	Balcony	142 SQ.FT
Total	614 SQ.FT	Total	142 SQ.FT

Ceiling Height: 8'11" to 7'8"



Measurements, features, and dimensions are an approximate, and are for illustrative purposes only. Measurements, features, and dimensions should not be used for any construction purposes. Actual measurements may vary. Total Square Footage may include low-height ceilings, unheated rooms, and room labels may not be accurate and is an approximate. The floor plan may not be to scale. We release all liability. E&O Insured