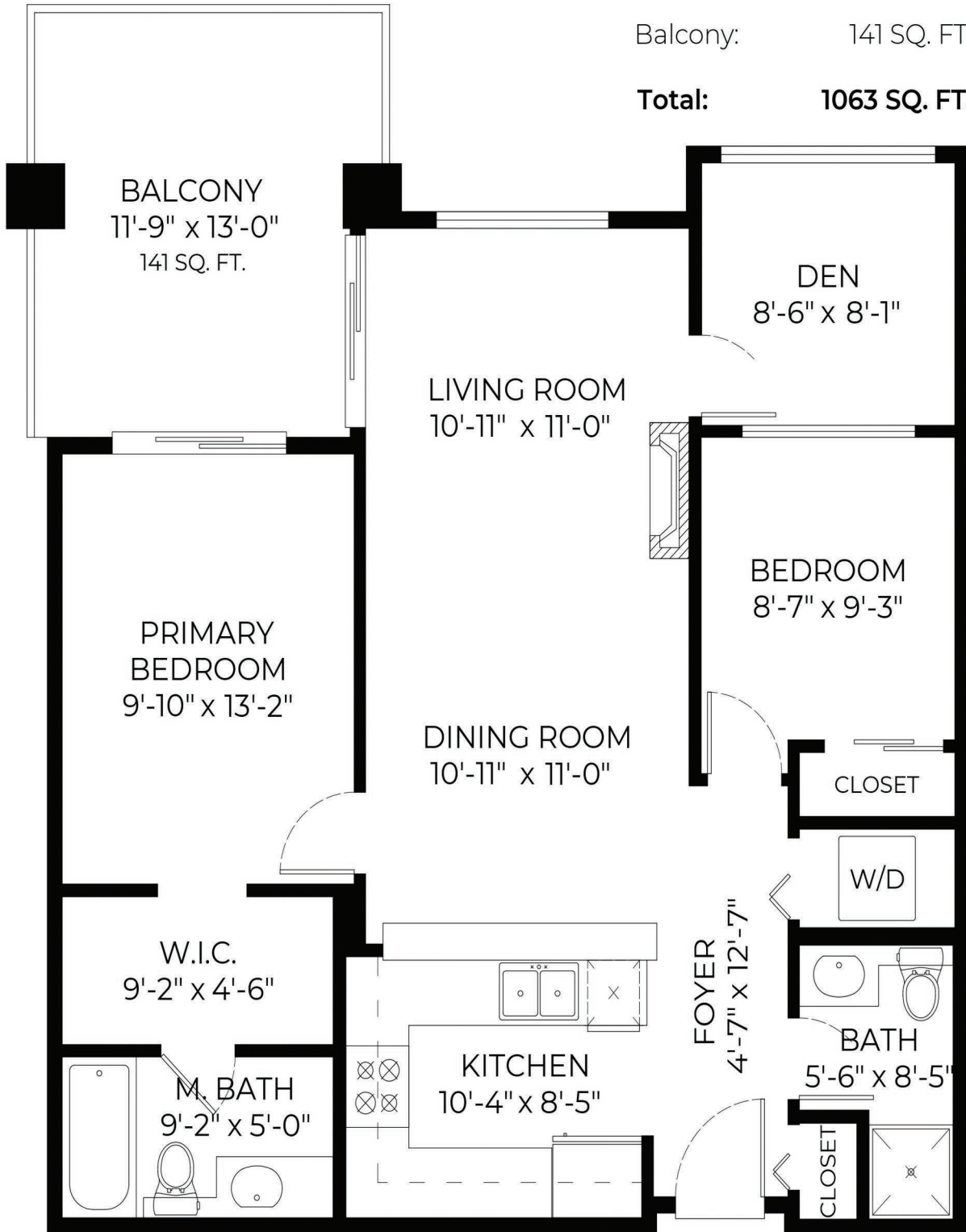


#318-100 Capilano Road, Port Moody, BC

Finished Area: 922 SQ. FT.

Balcony: 141 SQ. FT.

Total: 1063 SQ. FT.



FLOOR PLAN
Ceiling Height: 8'-11"



Jessica Lowes

778.288.1511

jessica@kelsieandmorgan.com

Kelsie Struch

778.387.6090

kelsie@kelsieandmorgan.com

FLOOR PLAN CREATED BY:
SCANN3D.CA
MAY 13, 2022

stillhavn
REAL ESTATE SERVICES

KELSIE & MORGAN

REAL ESTATE GROUP

THE FLOOR PLAN ILLUSTRATION IS NOT SUITABLE FOR CONSTRUCTION/ARCHITECTURAL PURPOSES. MEASUREMENTS ARE APPROXIMATE AND MAY NOT BE TO SCALE. E&O INSURED.