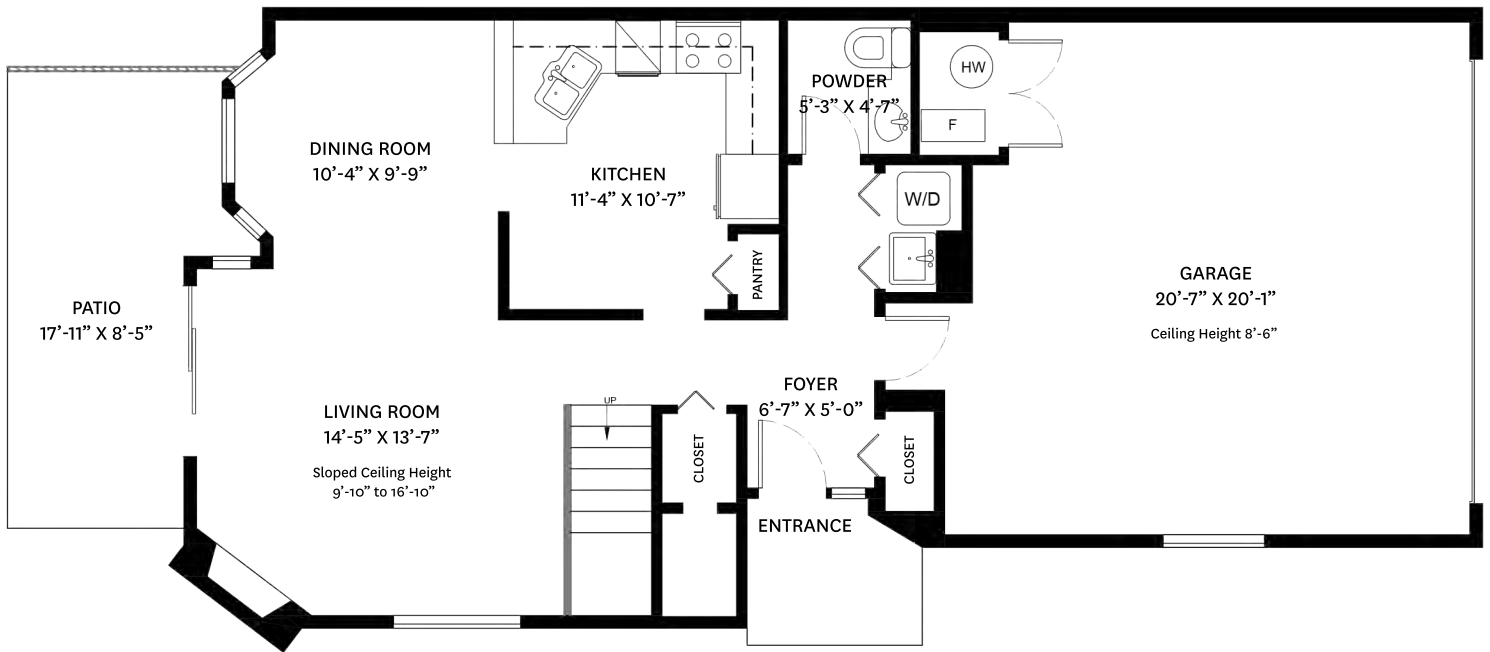


# 56-650 ROCHE POINT DRIVE, NORTH VANCOUVER, BC

**MAIN FLOOR PLAN:** 624 SQ.FT. **PATIO:** 137 SQ.FT.  
**UPPER FLOOR TOTAL:** 735 SQ.FT. **GARAGE:** 453 SQ.FT.  
**TOTAL:** 1,359 SQ.FT.



**UPPER FLOOR PLAN**  
Ceiling Height: 8'-0"



**MAIN FLOOR PLAN**  
Ceiling Height: 7'-11"



## KELSIE & MORGAN

REAL ESTATE GROUP

[www.KelsieAndMorgan.com](http://www.KelsieAndMorgan.com)

floor plan designed by  
 ishot.ca Enterprises Inc.  
 604-368-7979  
<http://ishot.ca>