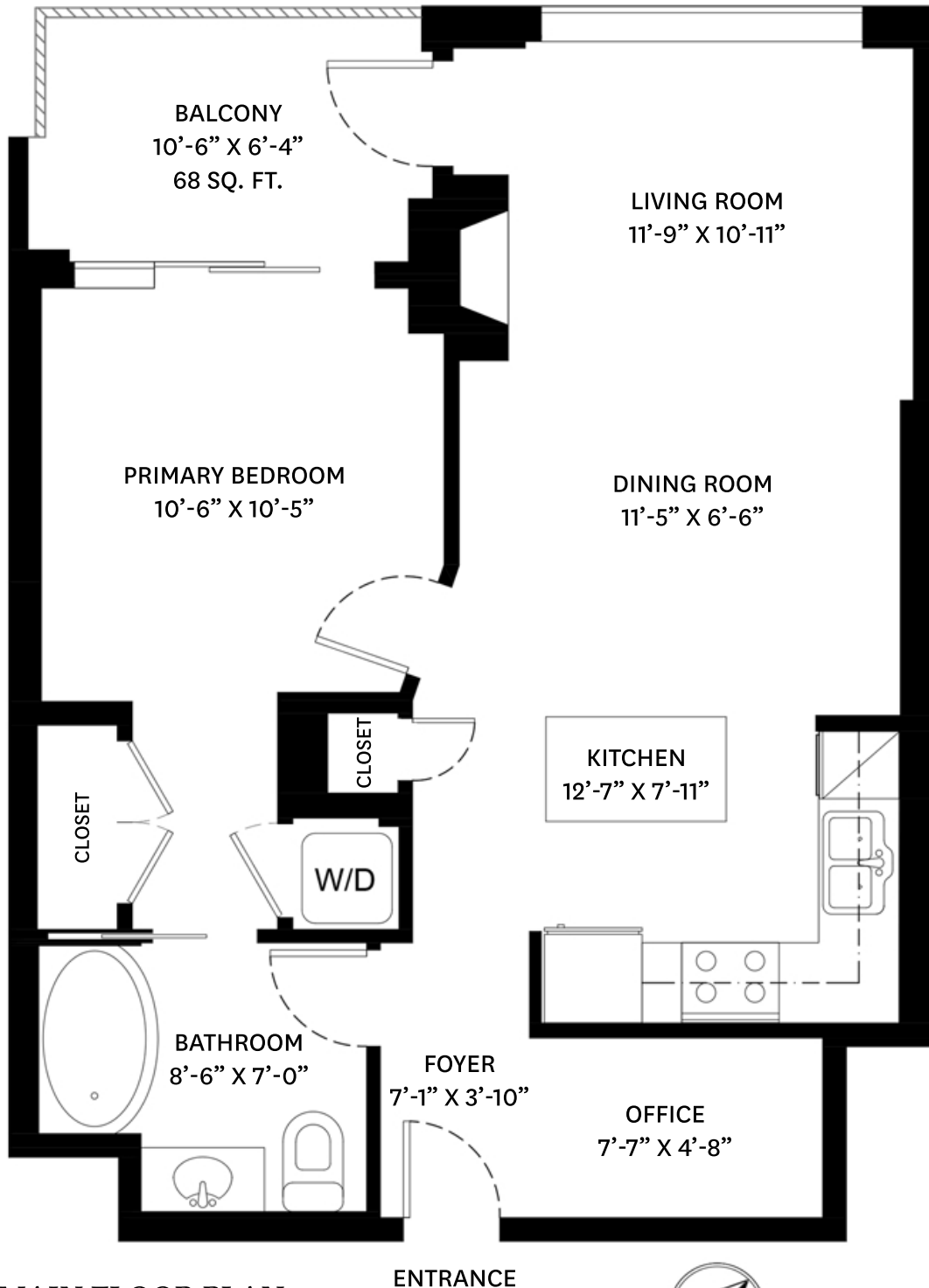


1505-155 WEST 1ST STREET, NORTH VANCOUVER, BC

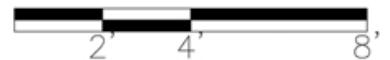
MAIN FLOOR TOTAL: 676 SQ. FT.

BALCONY: 68 SQ. FT.



MAIN FLOOR PLAN
Ceiling Height: 8'-0"

ENTRANCE



stilhavn
REAL ESTATE SERVICES

Mark Eilers
604-785-6275
mark@markeilers.com

Jessica Lowes
778-288-1511
jessica@kelsieandmorgan.com

floor plan designed by
ishot.ca Enterprises Inc.
604-368-7979
<http://ishot.ca>