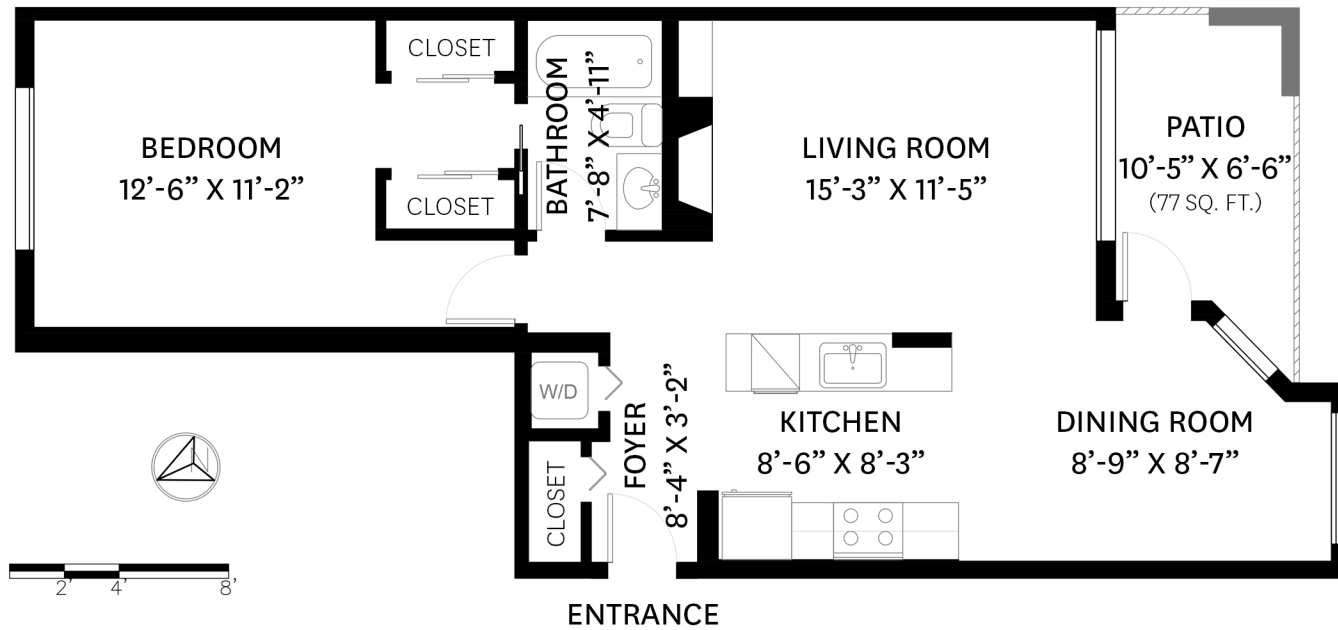


404 - 212 LONSDALE AVENUE, NORTH VANCOUVER, BC

MAIN FLOOR TOTAL: 761 SQ. FT.

PATIO: 77 SQ. FT.



MAIN FLOOR PLAN

KELSIE & MORGAN

REAL ESTATE GROUP

www.KelsieAndMorgan.com