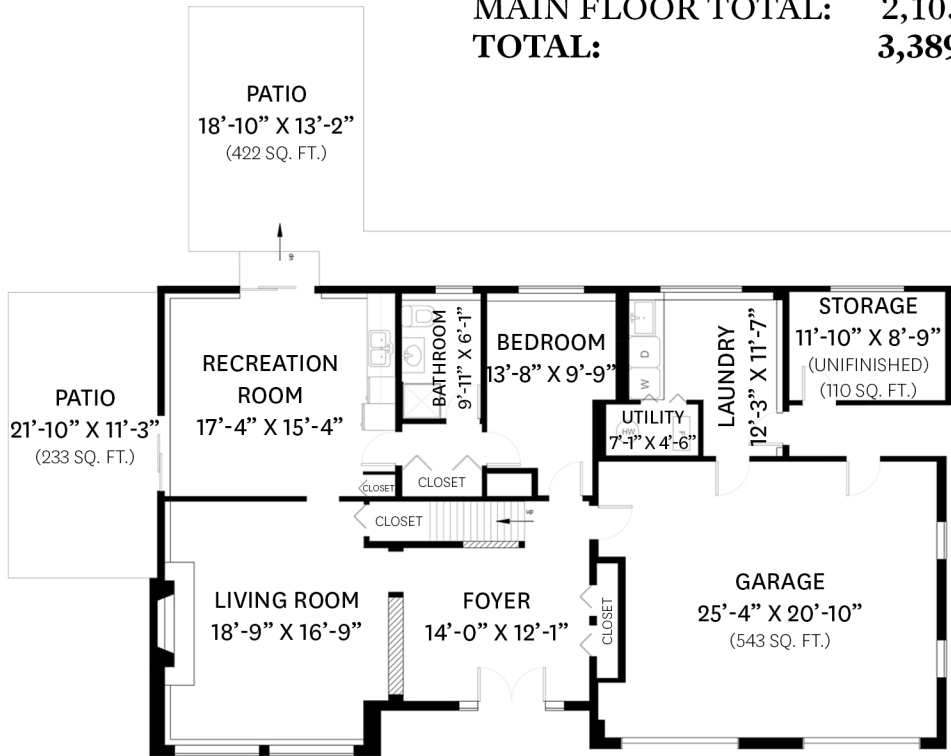


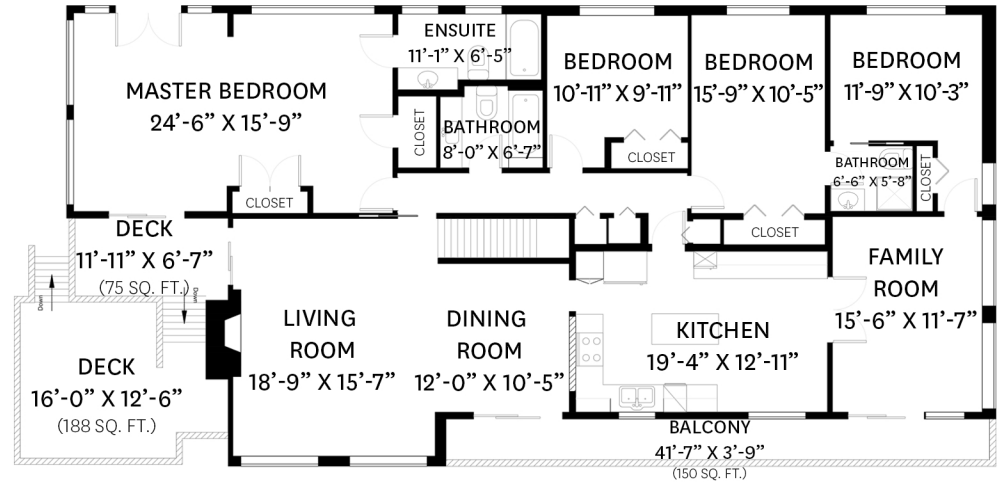
# 5655 KEITH ROAD, WEST VANCOUVER, BC

LOWER FLOOR TOTAL: 1,286 SQ. FT.  
 MAIN FLOOR TOTAL: 2,103 SQ. FT.  
**TOTAL: 3,389 SQ. FT.**

PATIO: 655 SQ. FT.  
 GARAGE: 543 SQ. FT.  
 STORAGE (UNFINISHED): 110 SQ. FT.  
 DECK: 263 SQ. FT.  
 BALCONY: 150 SQ. FT.



**LOWER FLOOR PLAN**  
 Ceiling Height: 8'-2"



**MAIN FLOOR PLAN**  
 Ceiling Height: 8'-10"

**KELSIE & MORGAN**  
 REAL ESTATE GROUP

[www.KelsieAndMorgan.com](http://www.KelsieAndMorgan.com)

THE FLOOR PLAN ILLUSTRATION IS NOT SUITABLE FOR CONSTRUCTION/ARCHITECTURAL PURPOSES. MEASUREMENTS ARE APPROXIMATE AND MAY NOT BE TO SCALE. E&O INSURED.