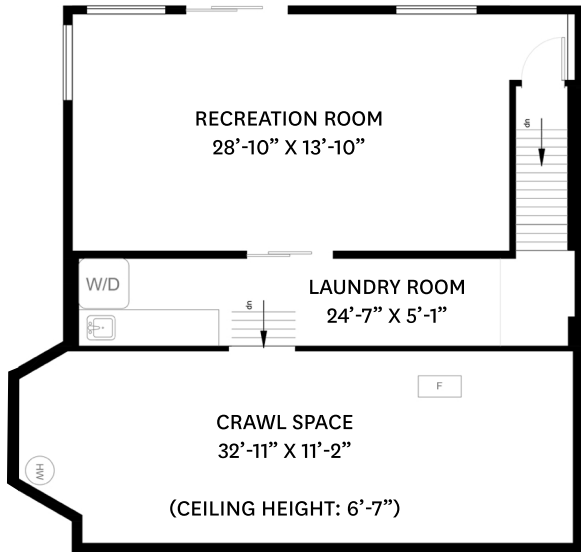


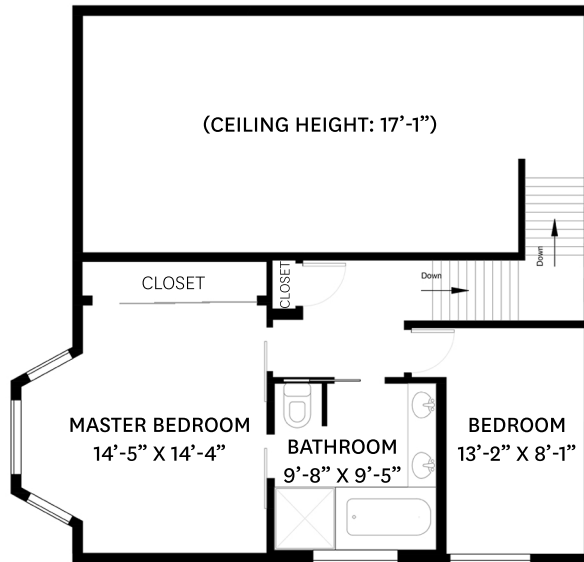
3417 MAIN AVENUE, BELCARRA, BC

LOWER FLOOR TOTAL: 523 SQ. FT
MAIN FLOOR TOTAL: 1135 SQ. FT
UPPER FLOOR TOTAL: 575 SQ. FT
TOTAL: 2233 SQ. FT

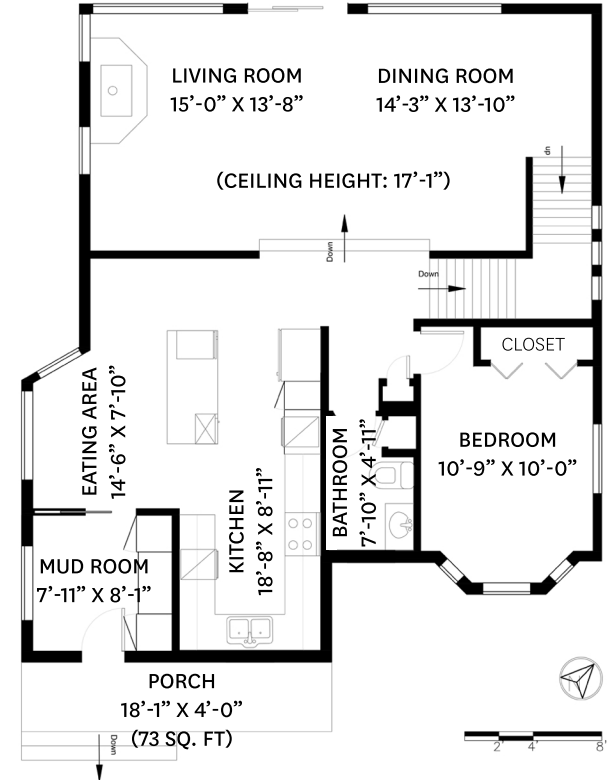
PORCH: 73 SQ. FT



LOWER FLOOR PLAN
Ceiling Height: 7'-10"



UPPER FLOOR PLAN
Ceiling Height: 12'-3"



MAIN FLOOR PLAN
Ceiling Height: 8'-0"

KELSIE & MORGAN

REAL ESTATE GROUP

www.KelsieAndMorgan.com