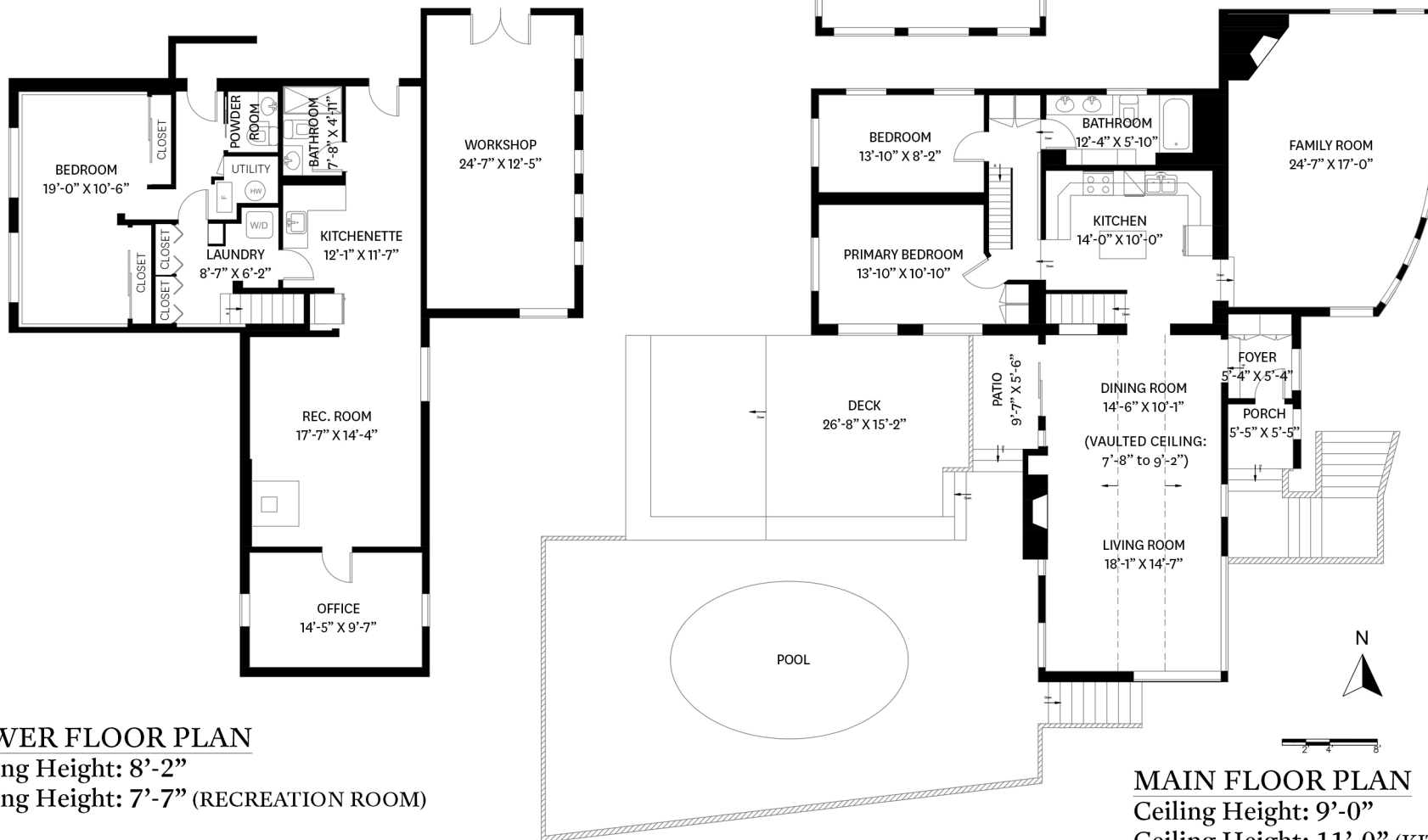


3625 PRINCESS AVENUE, NORTH VANCOUVER, BC

LOWER FLOOR TOTAL: 1,554 SQ. FT.
 MAIN FLOOR TOTAL: 1,669 SQ. FT.
 LOFT FLOOR TOTAL: 212 SQ. FT.
TOTAL: 3,435 SQ. FT.

DECK: 397 SQ. FT.
 PATIO: 52 SQ. FT.
 PORCH: 30 SQ. FT.

LOFT FLOOR PLAN
 Ceiling Height: 6'-1" to 8'-6" (SLOPE CEILING)



LOWER FLOOR PLAN
 Ceiling Height: 8'-2"
 Ceiling Height: 7'-7" (RECREATION ROOM)

MAIN FLOOR PLAN
 Ceiling Height: 9'-0"
 Ceiling Height: 11'-0" (KITCHEN)

KELSIE & MORGAN
 REAL ESTATE GROUP

www.KelsieAndMorgan.com

THE FLOOR PLAN ILLUSTRATION IS NOT SUITABLE FOR CONSTRUCTION/ARCHITECTURAL PURPOSES. MEASUREMENTS ARE APPROXIMATE AND MAY NOT BE TO SCALE. E&O INSURED.