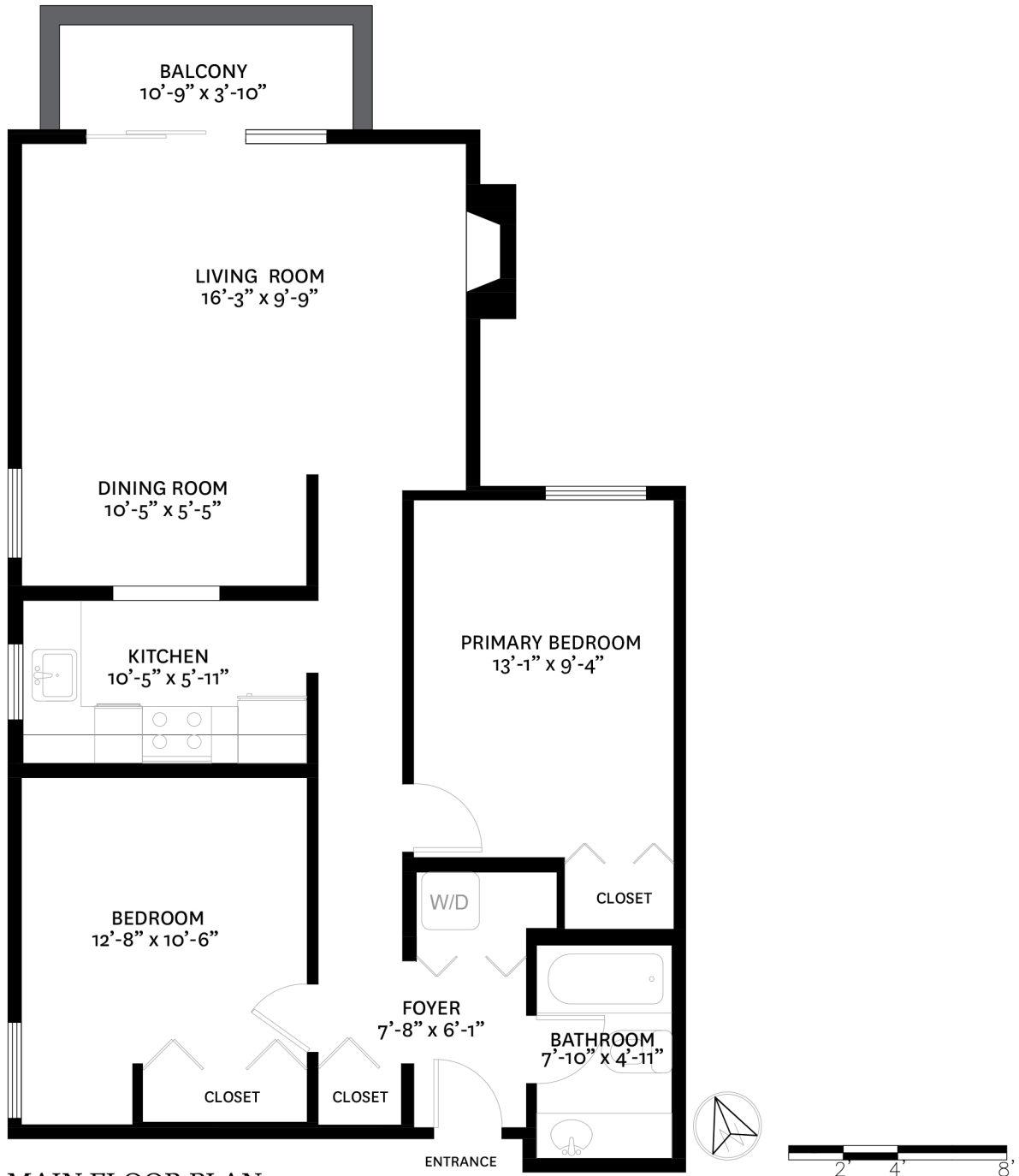


206-225 MOWAT STREET, NEW WESTMINSTER, BC

MAIN FLOOR TOTAL: 826 SQ.FT.

BALCONY: 55 SQ.FT.



MAIN FLOOR PLAN
Ceiling Height: 7'-11"

KELSIE & MORGAN

REAL ESTATE GROUP

www.KelsieAndMorgan.com