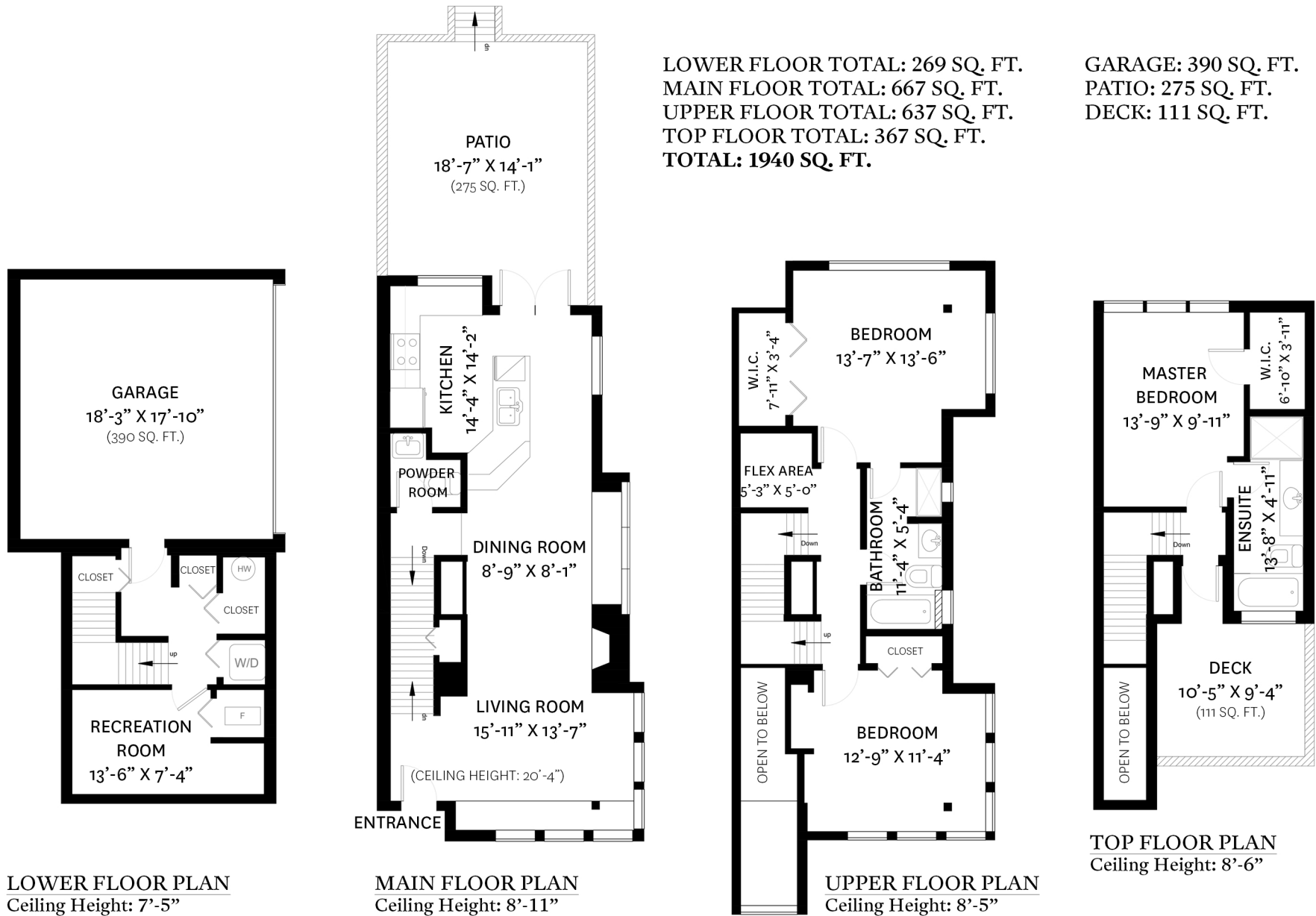


1650 ST. GEORGE'S AVENUE, NORTH VANCOUVER, BC

LOWER FLOOR TOTAL: 269 SQ. FT.
 MAIN FLOOR TOTAL: 667 SQ. FT.
 UPPER FLOOR TOTAL: 637 SQ. FT.
 TOP FLOOR TOTAL: 367 SQ. FT.
TOTAL: 1940 SQ. FT.

GARAGE: 390 SQ. FT.
PATIO: 275 SQ. FT.
DECK: 111 SQ. FT.



LOWER FLOOR PLAN
 Ceiling Height: 7'-5"

MAIN FLOOR PLAN
 Ceiling Height: 8'-11"

UPPER FLOOR PLAN
 Ceiling Height: 8'-5"

TOP FLOOR PLAN
 Ceiling Height: 8'-6"

KELSIE & MORGAN

REAL ESTATE GROUP

www.KelsieAndMorgan.com

