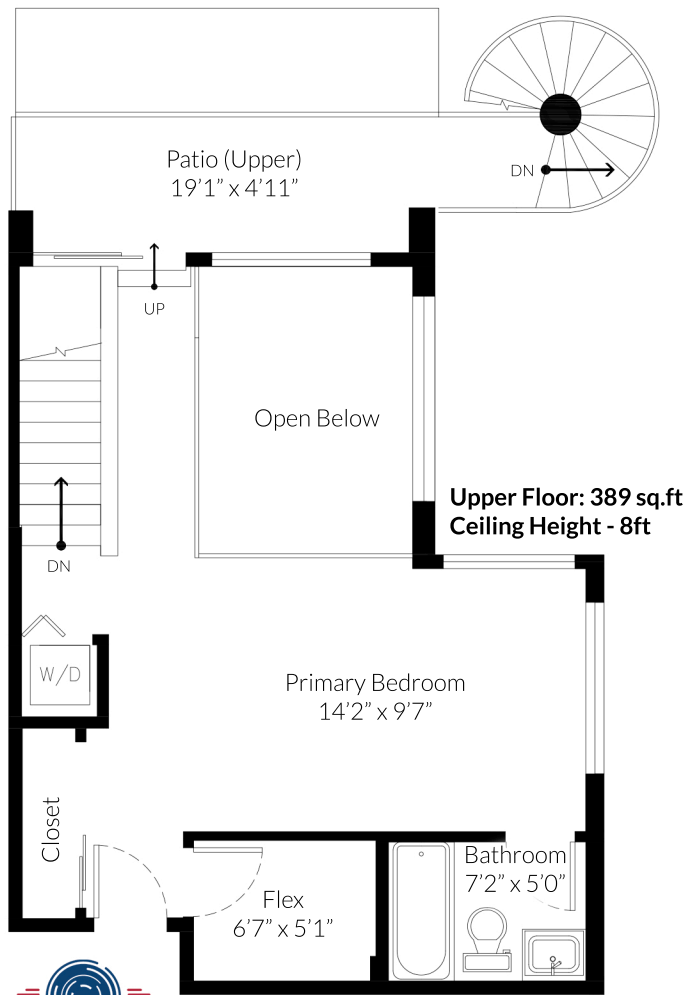


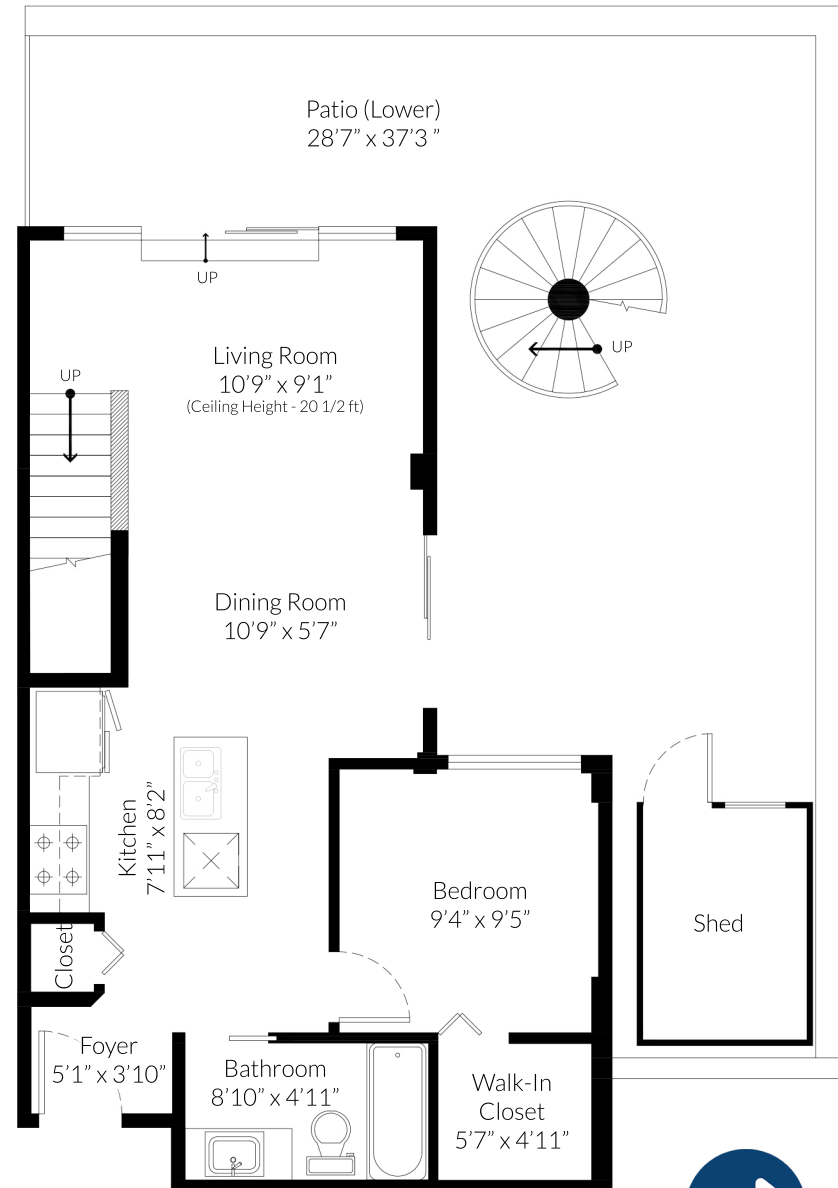
#402 - 2250 Commercial Drive, Vancouver, B.C.

Lower Floor: 629 sq.ft.
Upper Floor: 389 sq.ft.
Total: 1,018 sq.ft.

Patio(Lower): 204 sq.ft.
 Patio (Upper): 632 sq.ft.



Lower Floor: 629 sq.ft
Ceiling Height - 9ft



Measured on: July 6, 2021



The floor plan is not suitable for architectural/contruction purposes and is covered under E&O. © All in One Productions Incorporated 2021.
 Users shall not publish and distribute such material (in whole or in part) and/or incorporate it in other works of any form.

