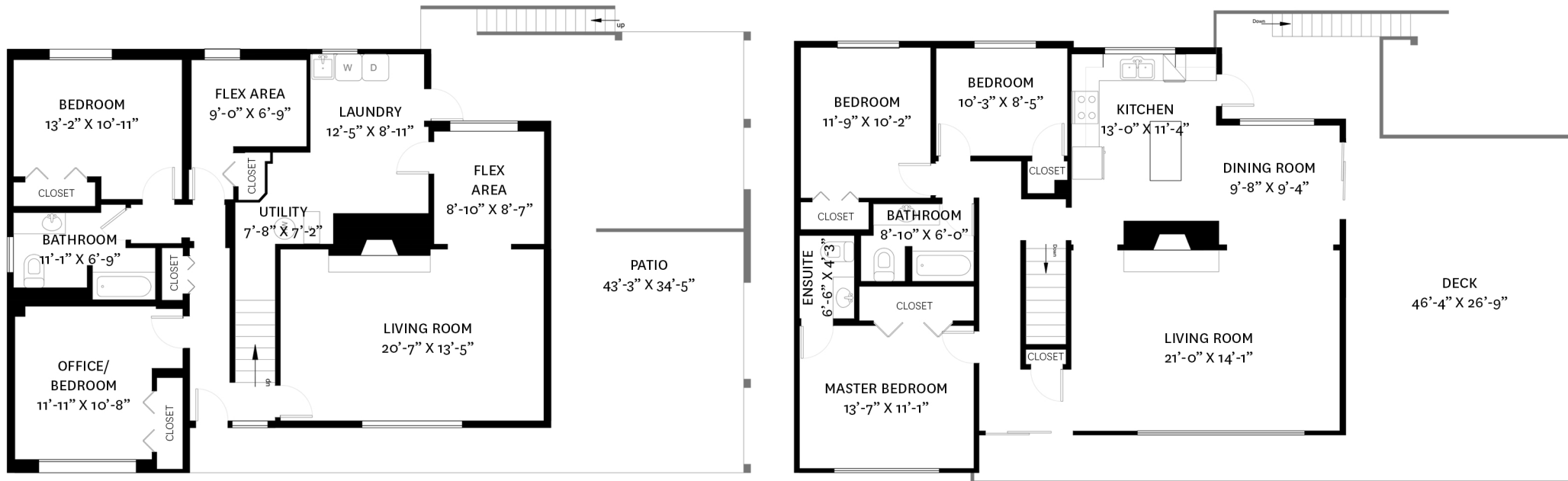


1478 COLEMAN STREET, NORTH VANCOUVER, BC

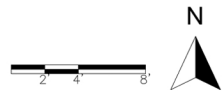
LOWER FLOOR TOTAL: 1,252 SQ. FT.
 MAIN FLOOR TOTAL: 1,302 SQ. FT.
 TOTAL: 2,554 SQ. FT.

PATIO: 687 SQ. FT.
 DECK: 668 SQ. FT.



LOWER FLOOR PLAN
 Ceiling Height: 8'-0"

MAIN FLOOR PLAN
 Ceiling Height: 8'-0"



KELSIE MORGAN

REAL ESTATE GROUP

www.KelsieAndMorgan.com