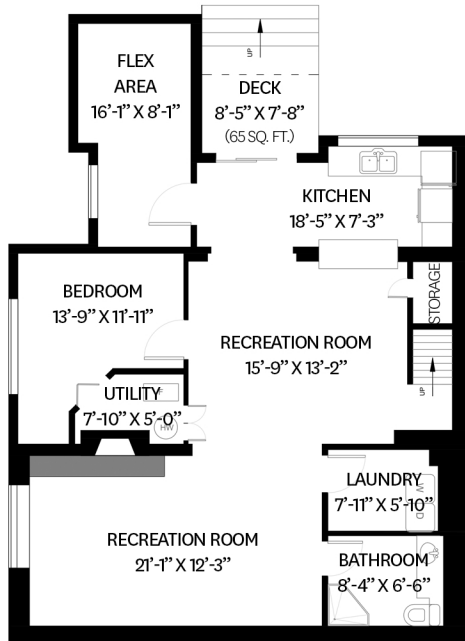


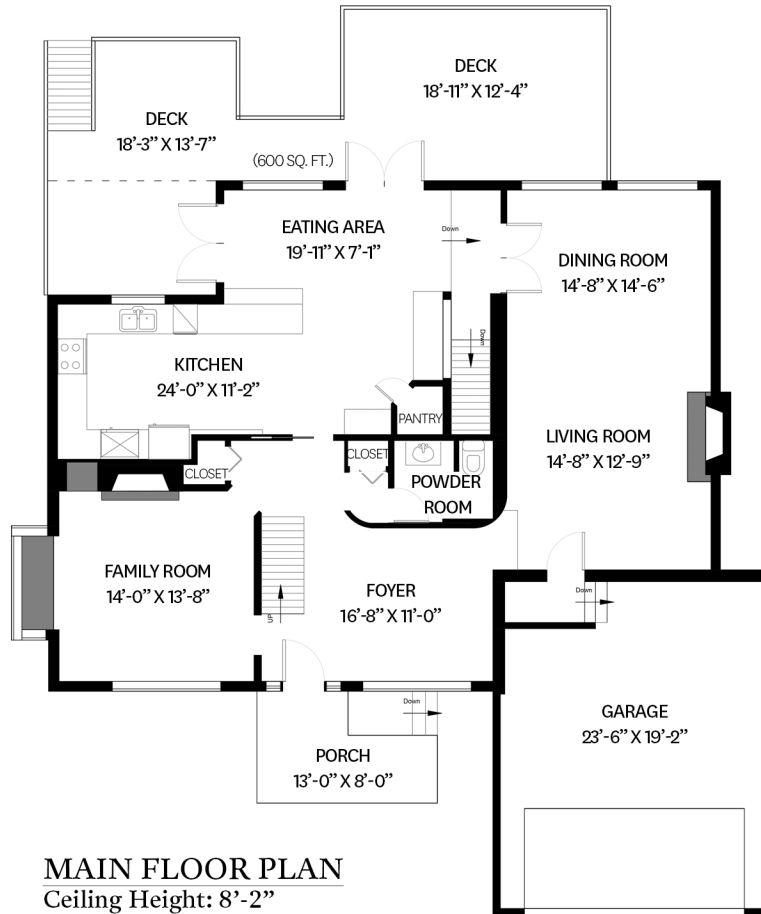
# 340 LAWSON AVENUE, WEST VANCOUVER, BC

LOWER FLOOR TOTAL: 1,237 SQ. FT.  
 MAIN FLOOR TOTAL: 1,535 SQ. FT.  
 UPPER FLOOR TOTAL: 1,705 SQ. FT.  
 TOTAL: 4,477 SQ. FT.

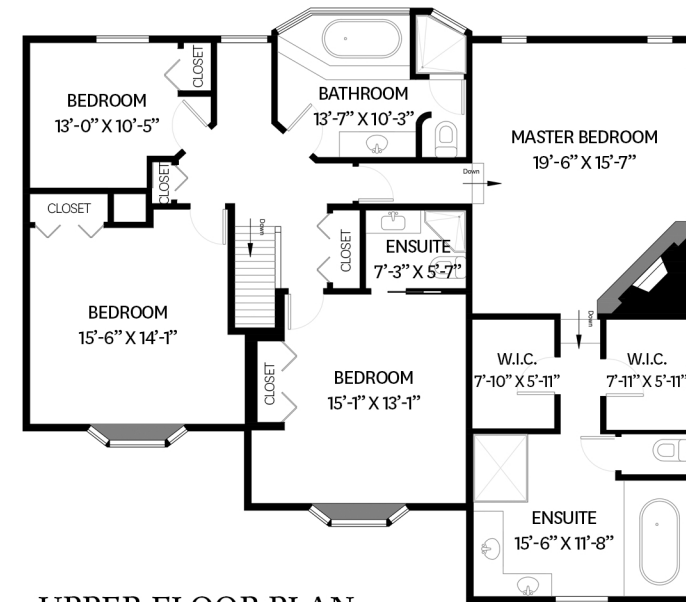
DECK: 665 SQ. FT.  
 PORCH: 84 SQ. FT.  
 GARAGE: 505 SQ. FT.



**LOWER FLOOR PLAN**  
 Ceiling Height: 6'-10"



**MAIN FLOOR PLAN**  
 Ceiling Height: 8'-2"



**UPPER FLOOR PLAN**  
 Ceiling Height: 7'-5"



## KELSIE MORGAN

REAL ESTATE GROUP

[www.KelsieAndMorgan.com](http://www.KelsieAndMorgan.com)