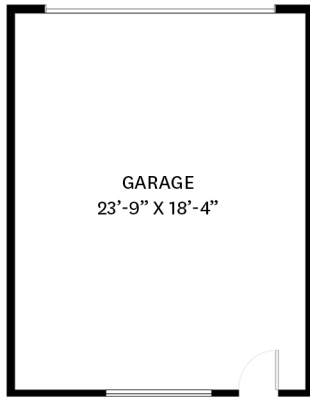


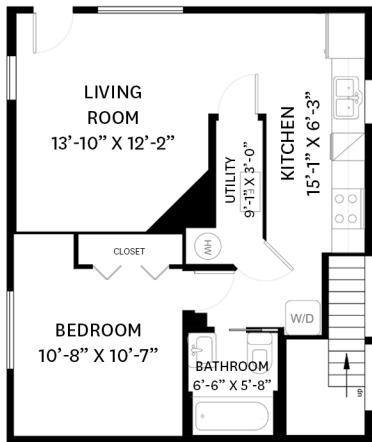
# 426 W KEITH ROAD, NORTH VANCOUVER, BC



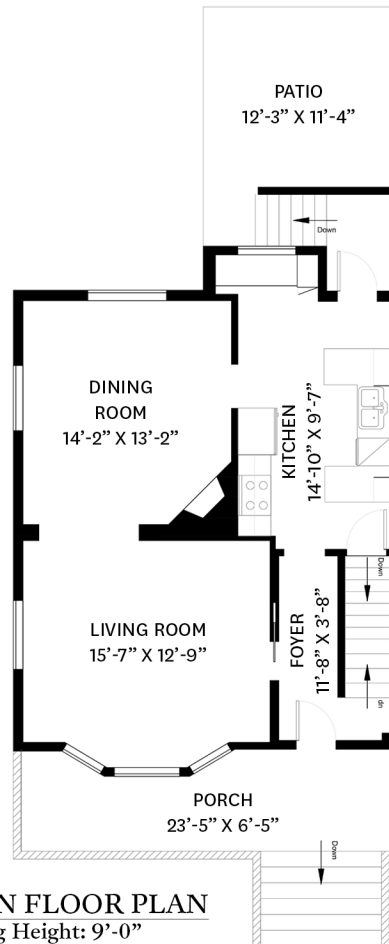
**GARAGE FLOOR PLAN**

LOWER FLOOR TOTAL: 649 SQ. FT.  
 MAIN FLOOR TOTAL: 746 SQ. FT.  
 UPPER FLOOR TOTAL: 765 SQ. FT.  
 TOP FLOOR TOTAL: 330 SQ. FT.  
**TOTAL: 2,490 SQ. FT.**

GARAGE: 478 SQ. FT.  
 PATIO: 152 SQ. FT.  
 PORCH: 153 SQ. FT.



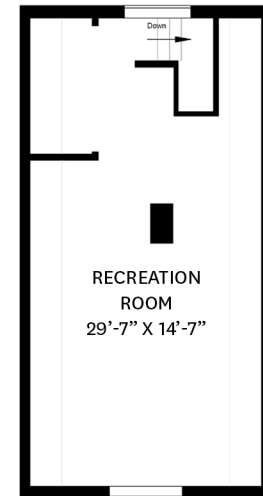
**LOWER FLOOR PLAN**  
 Ceiling Height: 6'-6"



**MAIN FLOOR PLAN**  
 Ceiling Height: 9'-0"



**UPPER FLOOR PLAN**  
 Ceiling Height: 7'-11"



**TOP FLOOR PLAN**  
 Ceiling Height: 8'-3"



## KELSIE & MORGAN

REAL ESTATE GROUP

[www.KelsieAndMorgan.com](http://www.KelsieAndMorgan.com)