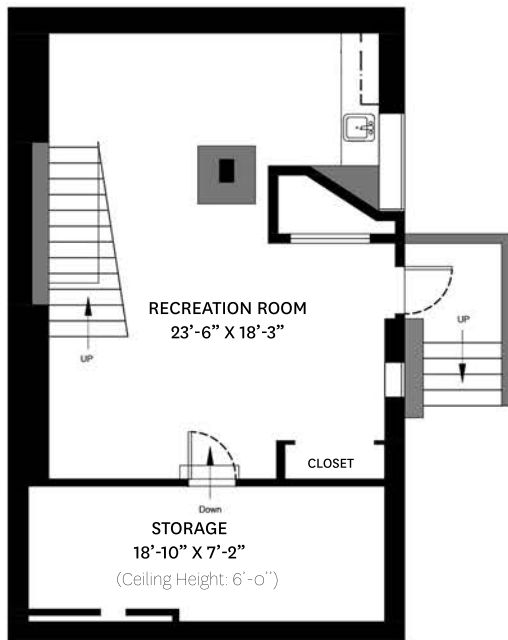
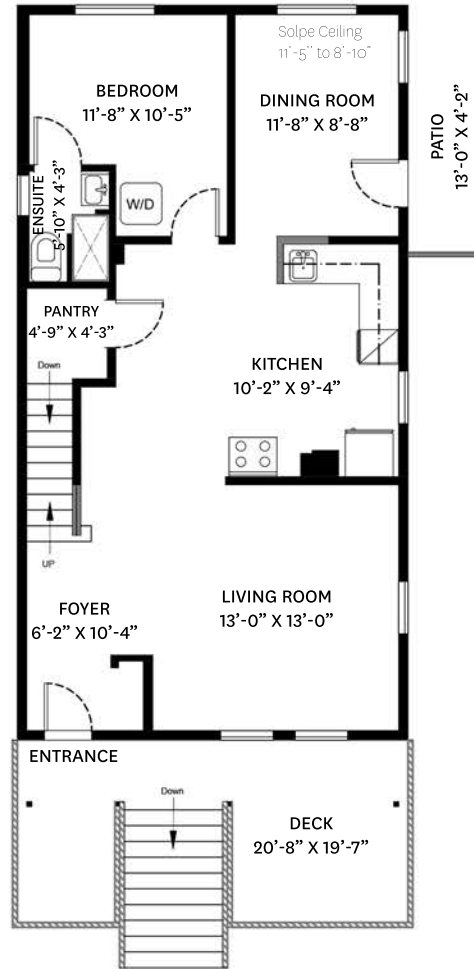


1512 BEWICKE AVENUE, NORTH VANCOUVER, BC

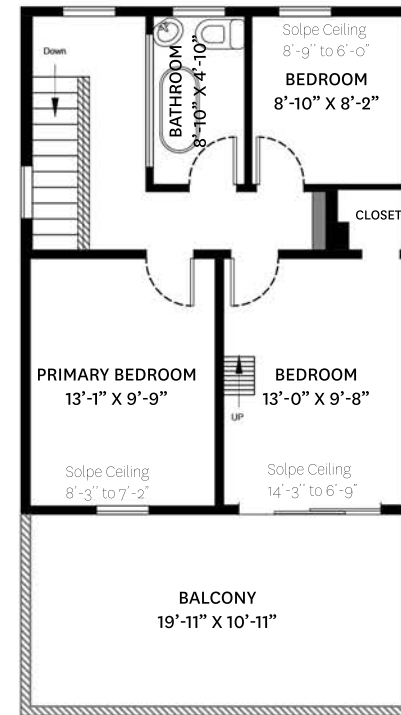
LOWER FLOOR TOTAL: 701 SQ.FT. BALCONY: 202 SQ. FT.
 MAIN FLOOR TOTAL: 801 SQ.FT. DECK: 162 SQ. FT.
 UPPER FLOOR TOTAL: 560 SQ.FT. PATO: 51 SQ. FT.
TOTAL: 2,062 SQ.FT. ATTIC: 82 SQ.FT.



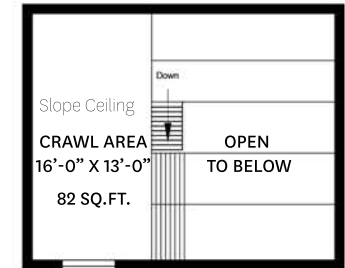
LOWER FLOOR PLAN
 Ceiling Height: 7'-7"



MAIN FLOOR PLAN
 Ceiling Height: 8'-10"



UPPER FLOOR PLAN
 Ceiling Height: 7'-6"



ATTIC
 Slope Ceiling



KELSIE & MORGAN
 REAL ESTATE GROUP

www.KelsieAndMorgan.com

floor plan designed by
 ishot.ca Enterprises Inc.
 604-368-7979
<http://ishot.ca>