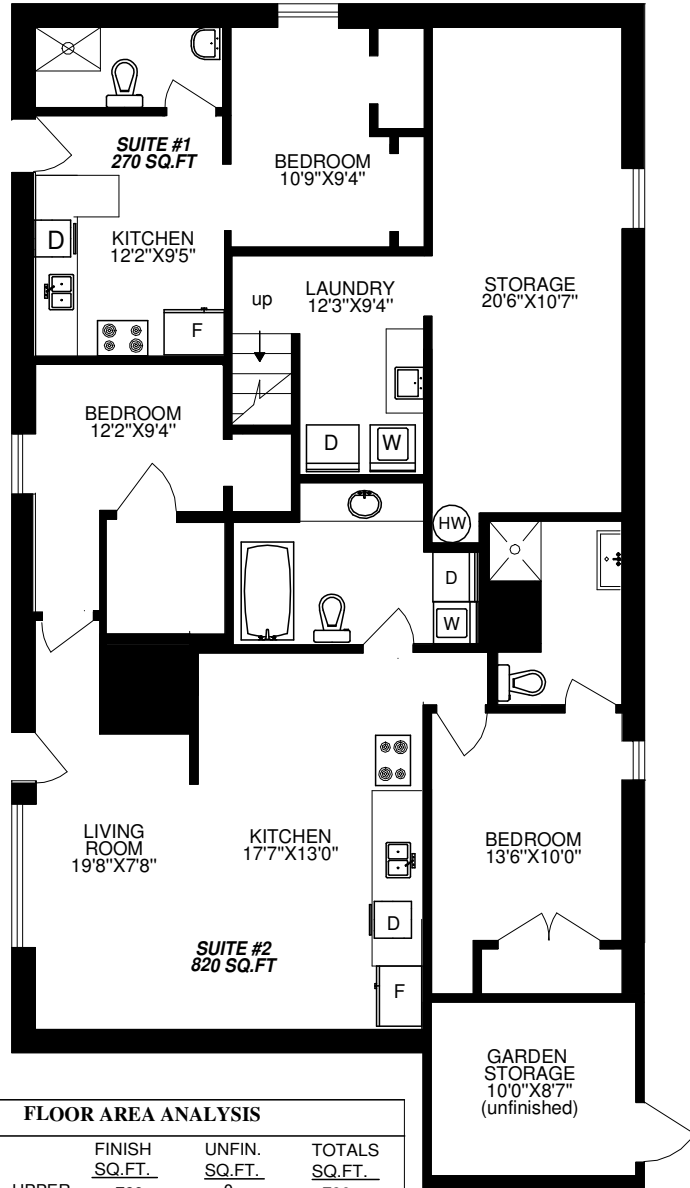


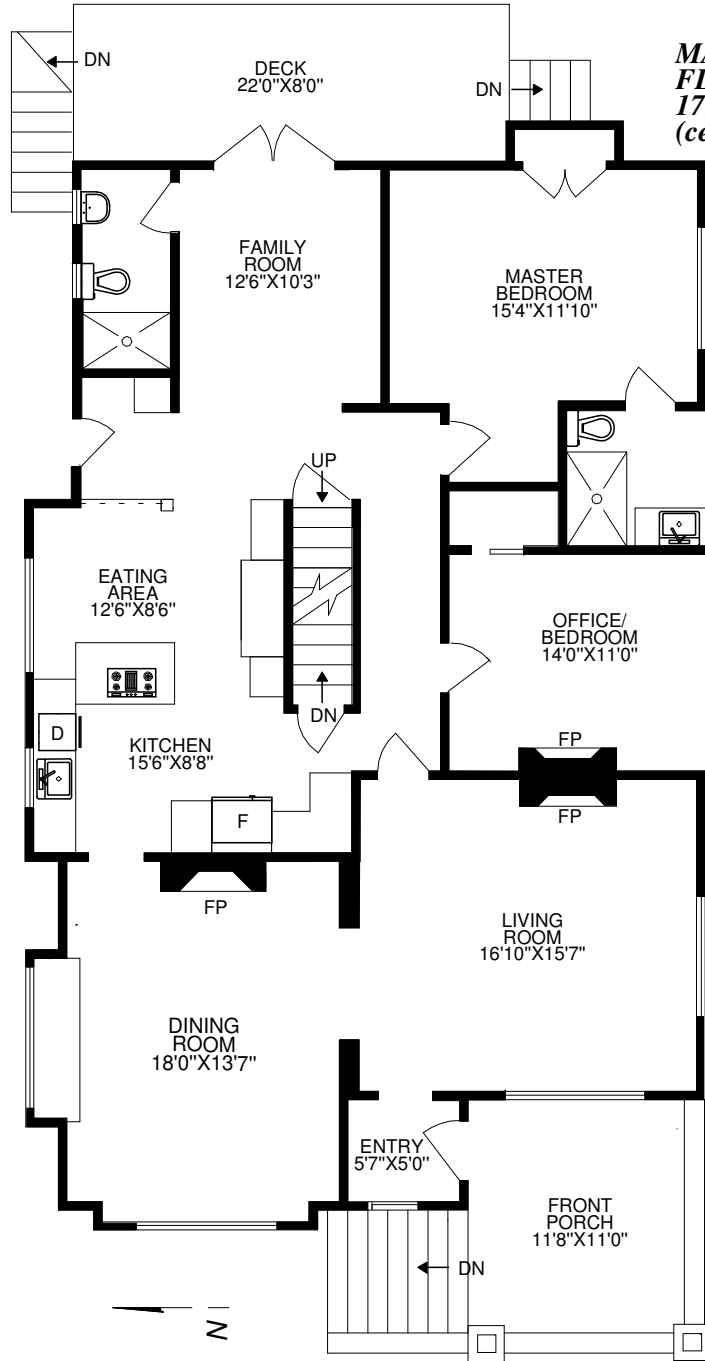
75 LINDEN AVENUE
VICTORIA, BC

TENIS COURT
43'0"X26'0"

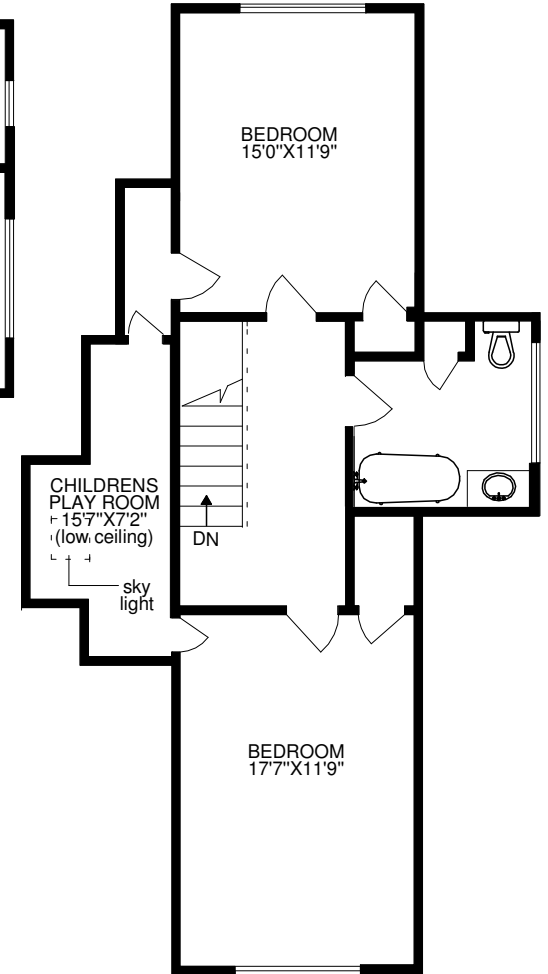
**LOWER
FLOOR**
1730 SQ.FT.
(ceiling 7'0")



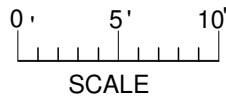
**MAIN
FLOOR**
1710 SQ.FT.
(ceiling 8'7")



**UPPER
FLOOR**
790 SQ.FT.
(ceiling 8'0")



FLOOR AREA ANALYSIS			
	FINISH SQ.FT.	UNFIN. SQ.FT.	TOTALS SQ.FT.
UPPER	790	0	790
MAIN	1710	0	1710
LOWER	1630	100	1730
TOTAL	4130	100	4230
OTHER			
REAR DECK	175 SQ.FT.		
FRONT PORCH	150 SQ.FT.		



PREPARED FOR THE EXCLUSIVE
USE OF THE AGENCY, SALTER GROUP

DATE MEASURED:
JUNE 13, 2020

250 744-4022
FILE 20054