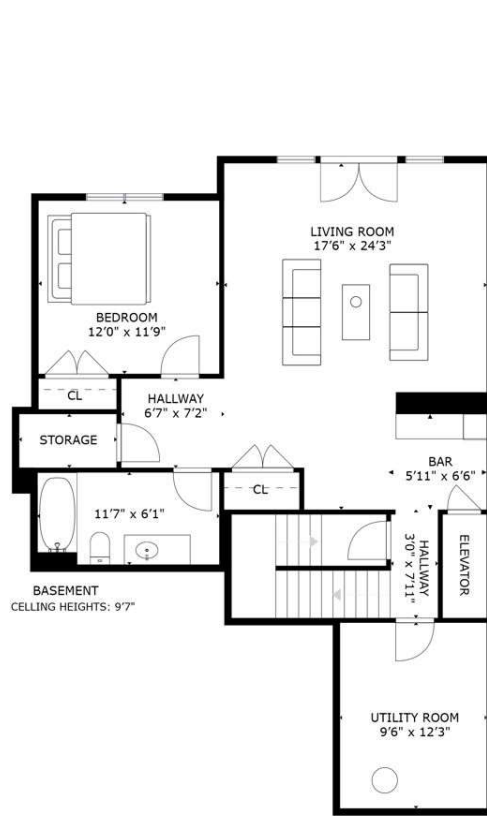
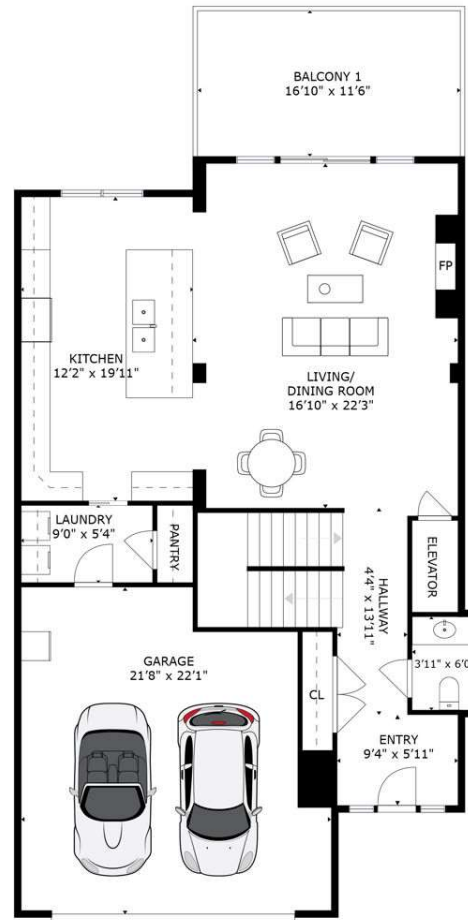


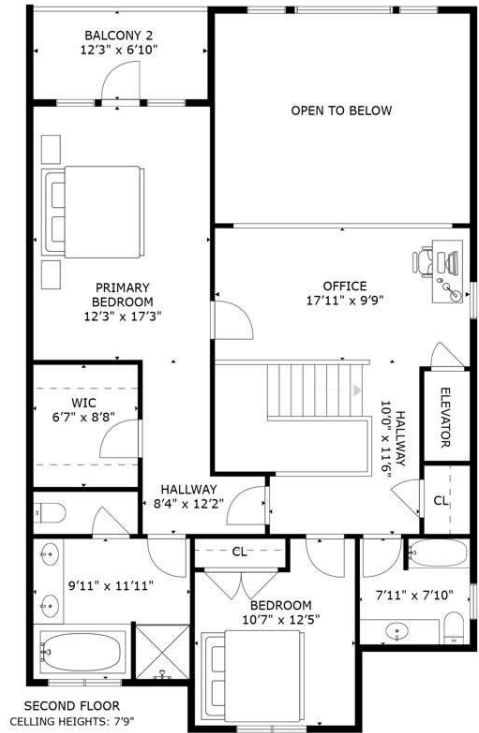
# #14-614 GRANROSE TERRACE



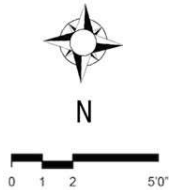
**BASEMENT**  
CELLING HEIGHTS: 9'7"



**FIRST FLOOR**  
CELLING HEIGHTS: 8'11"



**SECOND FLOOR**  
CELLING HEIGHTS: 7'9"



FLOOR	FINISHED	UNFINISHED	TOTAL
SECOND	1301	70	1371
FIRST FLOOR	1013	620	1633
BASEMENT	997	0	997
<b>TOTAL</b>	<b>3311</b>	<b>690</b>	<b>4001</b>

OTHER AREAS	
GARAGE	445
BALCONY 1	175
BALCONY 2	70