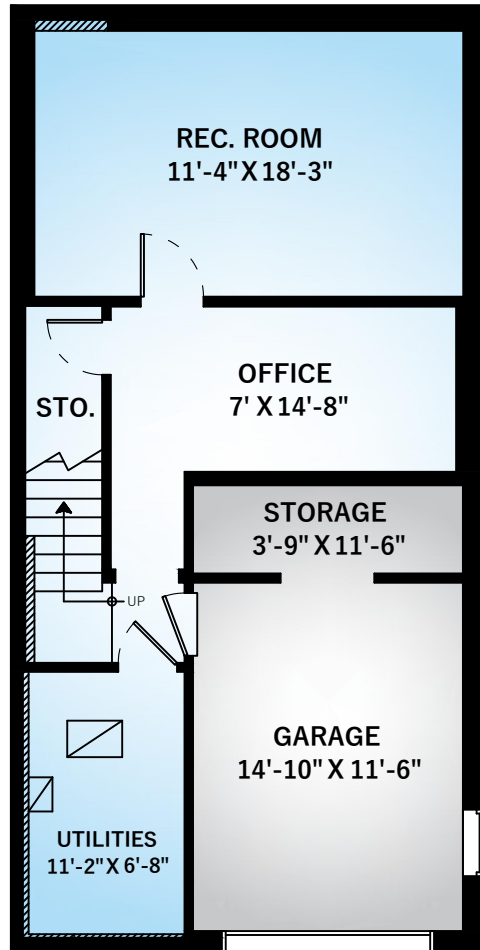


746 FRONT ST

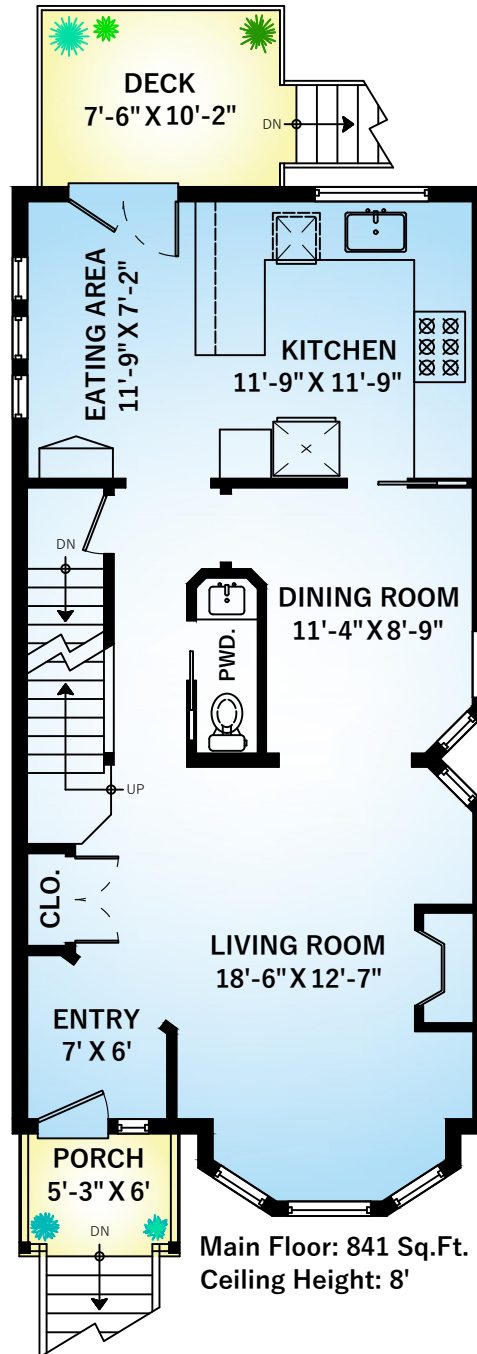
VICTORIA, BC

Main Floor	841 SQ.FT.
Upper Floor	863 SQ.FT.
Lower Floor	565 SQ.FT.
Total	2269 SQ.FT.

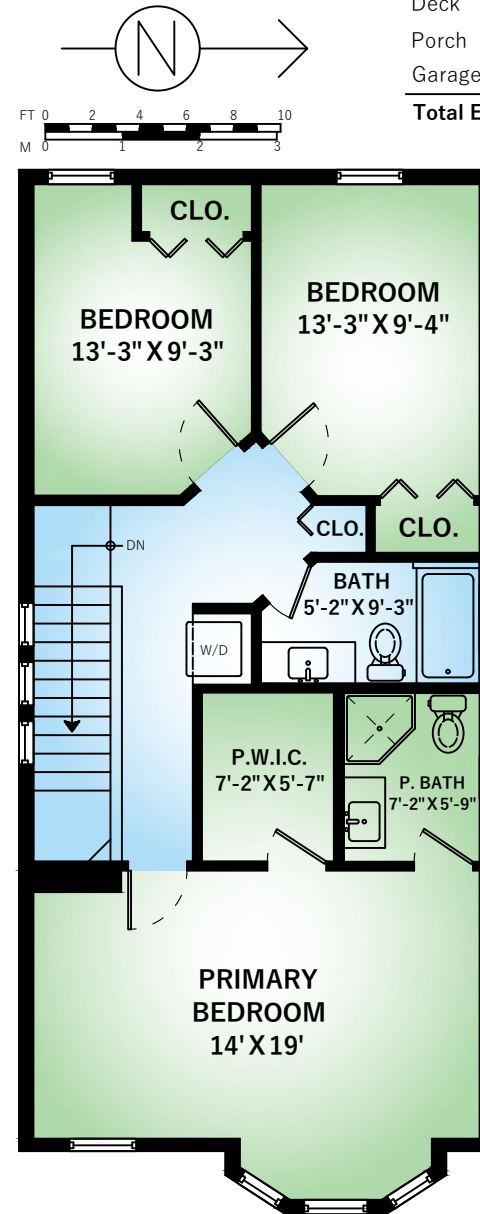
Deck	83 SQ.FT.
Porch	36 SQ.FT.
Garage	247 SQ.FT.
Total Extras	366 SQ.FT.



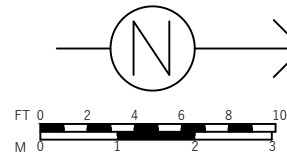
Lower Floor: 565 Sq.Ft.
Ceiling Height: 7'-2"



Main Floor: 841 Sq.Ft.
Ceiling Height: 8'



Upper Floor: 863 Sq.Ft.
Ceiling Height: 8'



PREPARED FOR JOSH MAREK
JOSHMAREK.COM

SUPPLIED BY:

**MATTHEW JAMES
PHOTOGRAPHY**

WWW.MATTHEWJAMESPHOTO.CA