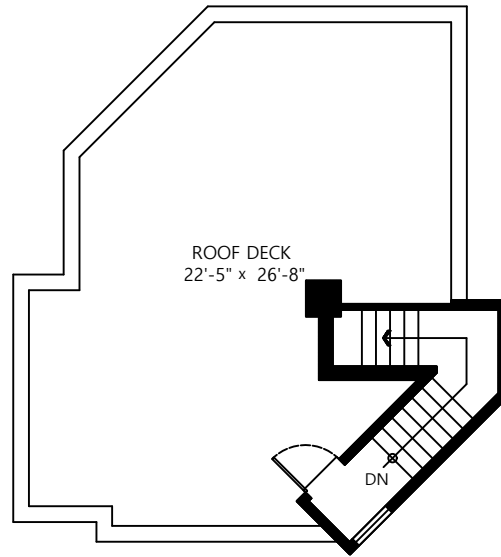


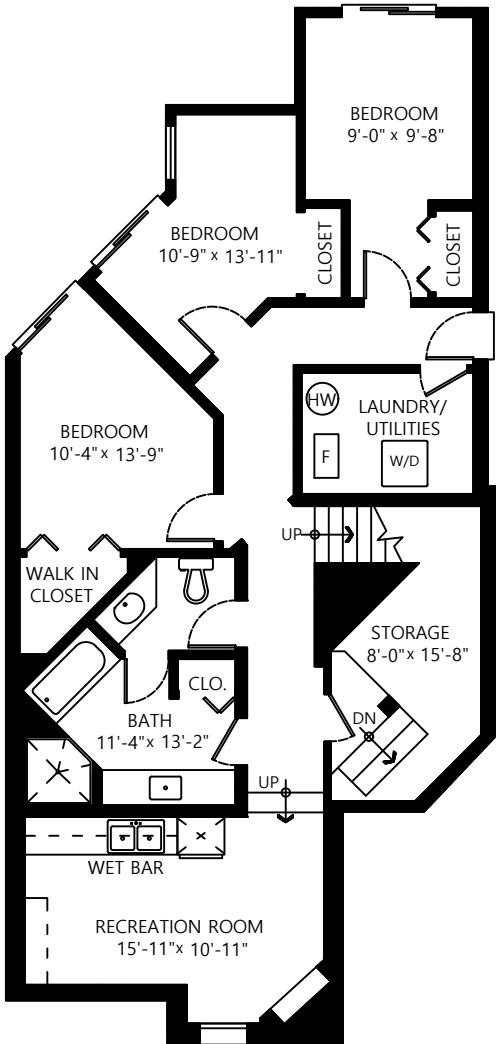
70 N Ellesmere Avenue, Burnaby, B.C.

Main Floor:	978 sq.ft.
Upper Floor:	962 sq.ft.
Top Floor:	85 sq.ft.
Lower Floor:	1,137 sq.ft.
Total:	3,162 sq.ft.

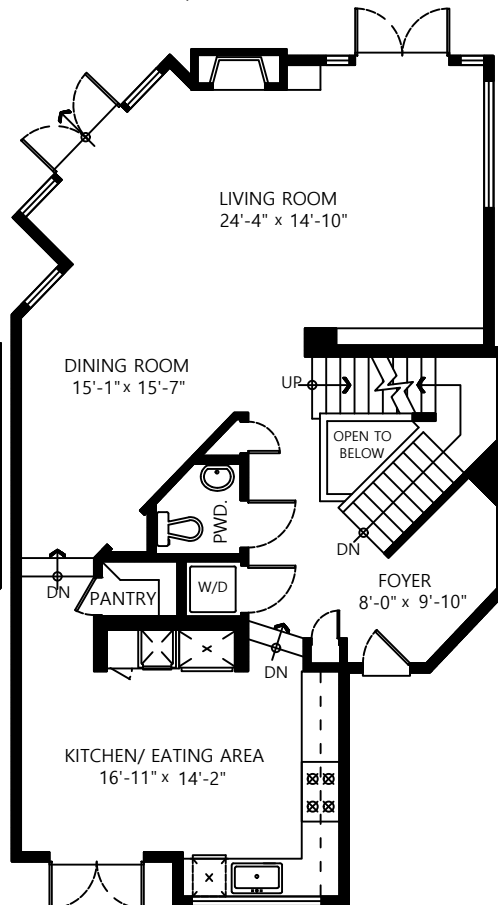
Roof Deck:	524 sq.ft.
Open to Below:	64 sq.ft.



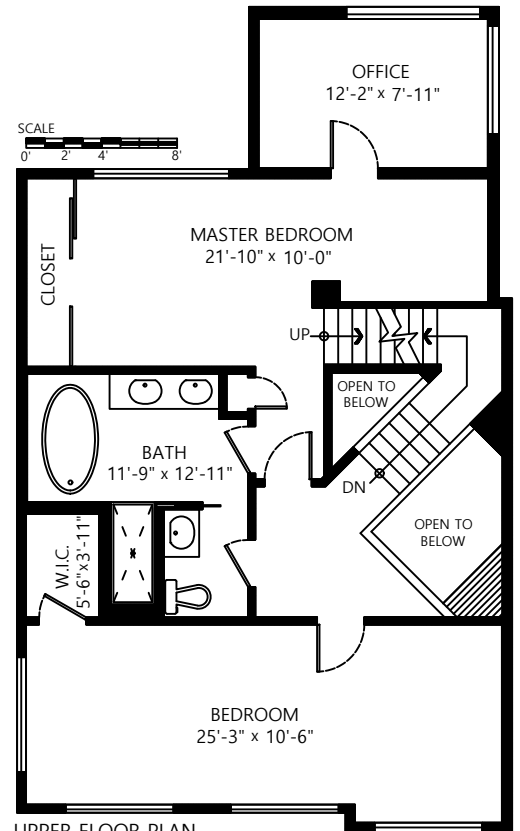
ROOF DECK FLOOR PLAN
Floor Area: 85 sq.ft.



LOWER FLOOR PLAN
Floor Area: 1,137 sq.ft.
Ceiling Height: 8'



MAIN FLOOR PLAN
Floor Area: 978 sq.ft.
Ceiling Height: 8'-11"



UPPER FLOOR PLAN
Floor Area: 962 sq.ft.
Ceiling Height: 8'

