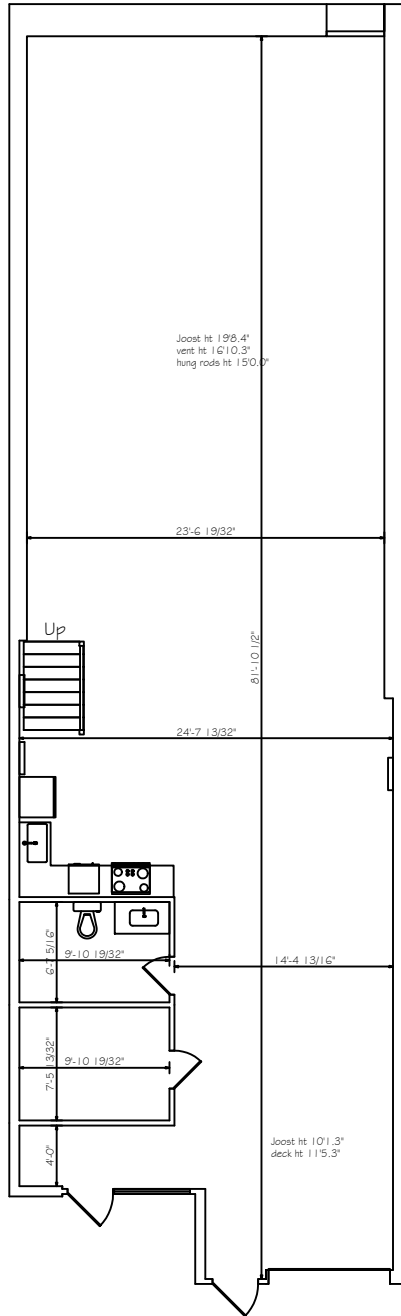
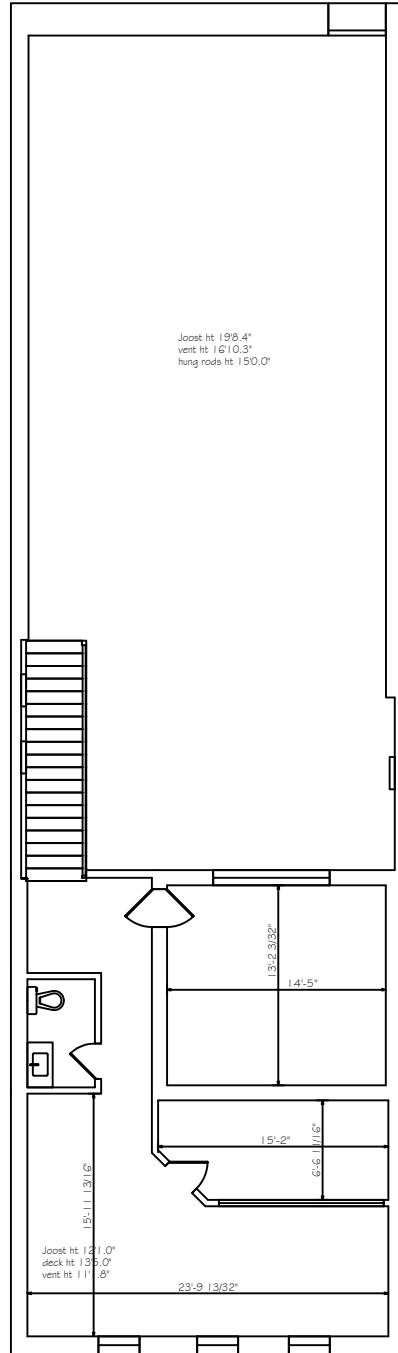


Measured To BOMA 2010 Retail Standard



Main Floor  
2034 Square Feet



Mezzanine  
793 Square Feet

PREPARED BY:



416-985-9859  
measuredup.ca

LOCATION:

Plan View  
6-11 Carlaw Avenue  
Toronto, Ontario



PREPARED FOR:

Ted Kern

DATE:

September 6, 2019

FILE:

6-1 | carlaw.dwg

SCALE:

NTS