

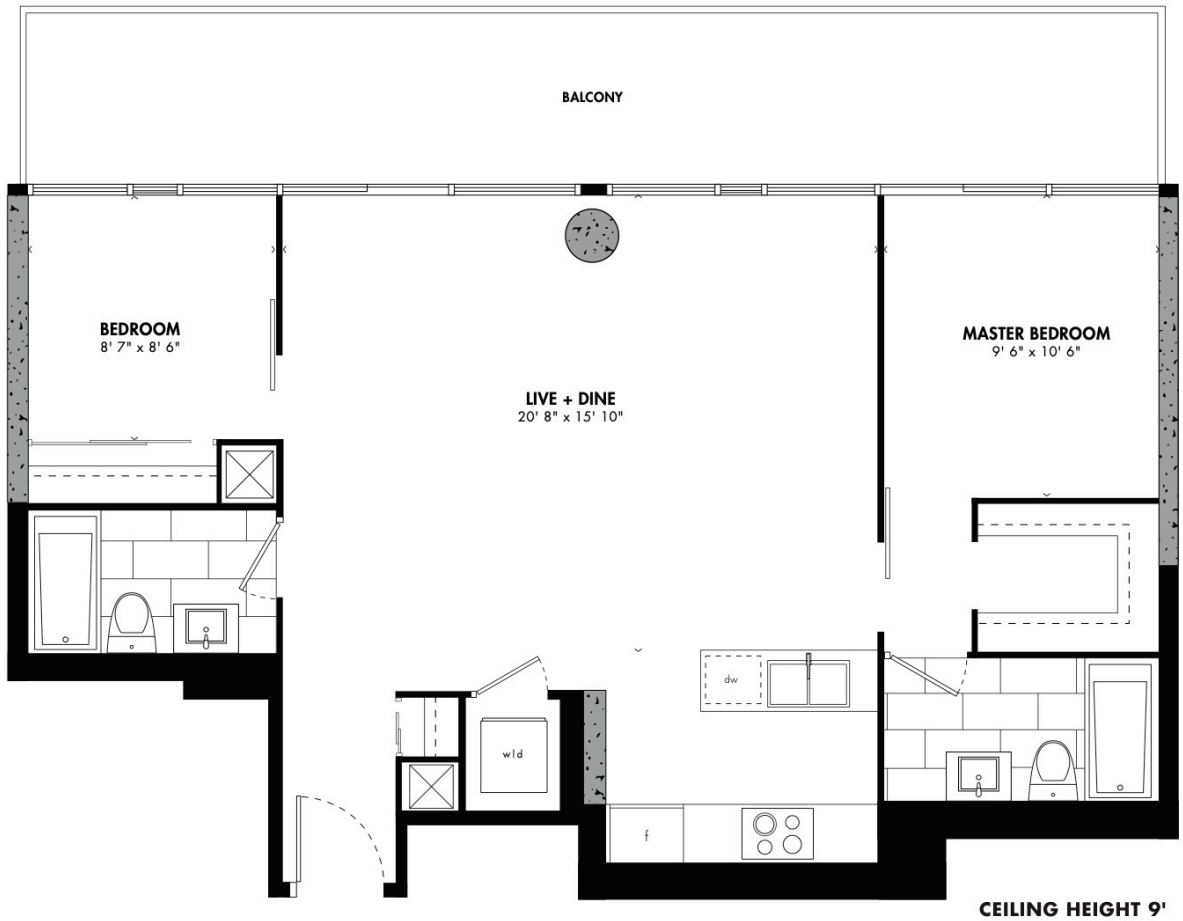
unit 04

TWO BEDROOM

921 SQ. FT.

PLUS 236 SQ. FT. EXTERIOR SPACE

MATSUYAMA



Windows, balcony and balcony door may shift in size and/or location. Actual floor area may differ from stated floor area. All prices, sizes and specifications are subject to change without notice. E. 501.E.



MATSUYAMA Located in a lush river basin, Shikoku's largest city is handsome and refined, with a hint of 'mainland' hustle. Matsuyama is famed across Japan for Dogo Onsen Honkan, a luxurious 19th-century public bathhouse built over ancient hot springs. The finest castle on the island towers above the stylish trams criss-crossing the city streets and the harbour glistening in the distance. Matsuyama is also home to seven of the 88 Temples, including Ishite-ji, one of the most famous stops on the pilgrimage.

FLOORS 23-24

RICHMOND STREET EAST

