

# STRATA PLAN OF LOT 1 DISTRICT LOT 210 LILLOOET DISTRICT PLAN KAP72481

STRATA PLAN EPS4984

VILLAGE OF PEMBERTON BCGS 92J.037



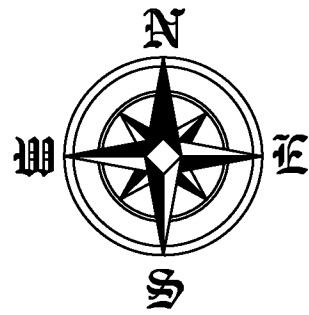
DISTANCES ARE IN METRES

THE INTENDED PLOT SIZE OF THIS PLAN IS 432mm IN WIDTH BY 560mm IN HEIGHT (C SIZE) WHEN PLOTTED AT A SCALE OF 1:750

GRID BEARINGS ARE DERIVED FROM DUAL FREQUENCY GNSS OBSERVATIONS AND ARE REFERRED TO THE CENTRAL MERIDIAN OF UTM ZONE 10 (123° WEST LONGITUDE).

THE UTM COORDINATES AND ESTIMATED HORIZONTAL POSITIONAL ACCURACY ACHIEVED ARE DERIVED FROM DUAL FREQUENCY BASELINE TIES TO WHISTLER CONTROL MONUMENT No. 897059.

THIS PLAN SHOWS HORIZONTAL GROUND-LEVEL DISTANCES UNLESS OTHERWISE SPECIFIED. TO COMPUTE GRID DISTANCES, MULTIPLY GROUND-LEVEL DISTANCES BY THE COMBINED FACTOR OF 0.99957583. THE COMBINED FACTOR HAS BEEN DETERMINED BASED ON AN ELLIPSOIDAL ELEVATION OF 189.93 METRES.

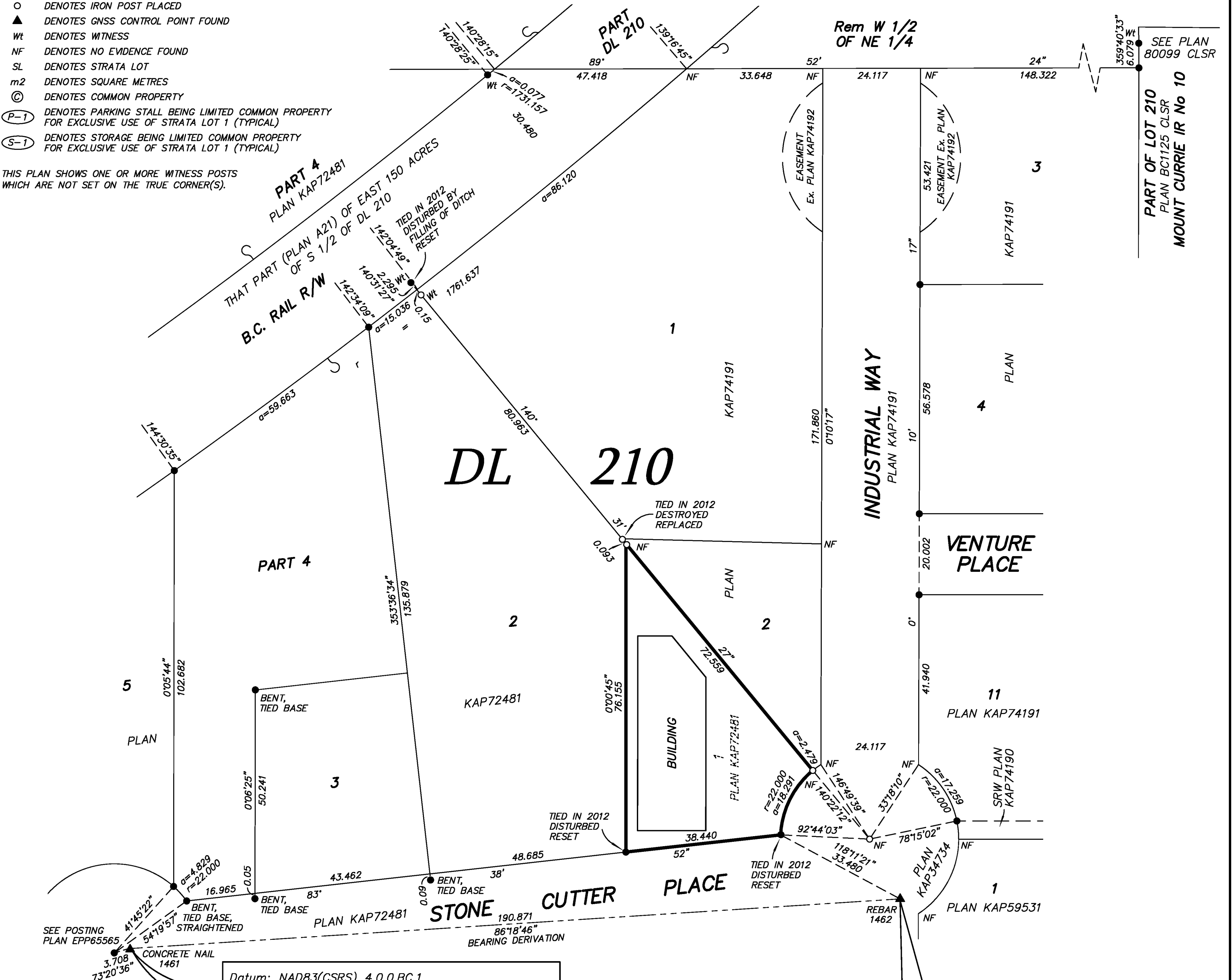


**CIVIC ADDRESS:**  
1947 STONE CUTTER PLACE  
PEMBERTON, B.C.

### LEGEND

- DENOTES IRON POST FOUND
- DENOTES IRON POST PLACED
- ▲ DENOTES GNSS CONTROL POINT FOUND
- Wt DENOTES WITNESS
- NF DENOTES NO EVIDENCE FOUND
- SL DENOTES STRATA LOT
- m<sup>2</sup> DENOTES SQUARE METRES
- ⊙ DENOTES COMMON PROPERTY
- (P-1) DENOTES PARKING STALL BEING LIMITED COMMON PROPERTY FOR EXCLUSIVE USE OF STRATA LOT 1 (TYPICAL)
- (S-1) DENOTES STORAGE BEING LIMITED COMMON PROPERTY FOR EXCLUSIVE USE OF STRATA LOT 1 (TYPICAL)

THIS PLAN SHOWS ONE OR MORE WITNESS POSTS WHICH ARE NOT SET ON THE TRUE CORNER(S).



Datum: NAD83(CSRs) 4.0.0.BC.1  
 UTM zone 10 coordinates  
 UTM Northing.....5573671.858  
 UTM Easting.....519269.096  
 Point combined factor: 0.99957578  
 Estimated horizontal positional accuracy: 0.05 metres

Datum: NAD83(CSRs) 4.0.0.BC.1  
 UTM zone 10 coordinates  
 UTM Northing.....5573684.127  
 UTM Easting.....519459.491  
 Point combined factor: 0.99957592  
 Estimated horizontal positional accuracy: 0.05 metres

STRATA LOT BOUNDARIES ARE MEASURED TO 0.03 METRES INSIDE THE METAL SURFACE ON EXTERIOR WALLS AND TO THE CENTRE LINE OF INTERIOR WALLS.

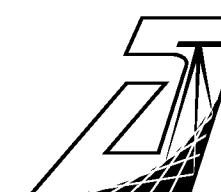
THE BUILDING SHOWN HEREON IS WITHIN THE EXTERNAL BOUNDARIES OF THE LAND THAT IS THE SUBJECT OF THE STRATA PLAN

THE BUILDING INCLUDED IN THIS STRATA PLAN HAS NOT BEEN PREVIOUSLY OCCUPIED

THE FIELD SURVEY REPRESENTED BY THIS PLAN WAS COMPLETED ON THE 30th DAY OF APRIL, 2018.

DARRYL J. MITCHELL, BCLS 689

THIS PLAN LIES WITHIN THE SQUAMISH-LILLOOET REGIONAL DISTRICT



AXIS LAND SURVEYING LTD.  
 B.C. & CANADA LANDS SURVEYORS  
 101, 32885 VENTURA AVENUE  
 ABBOTSFORD, B.C. V2S 6A3  
 T. 604-853-2700 F. 604-853-2710  
 FILE : M 5460  
 DWG : 5460-FS1

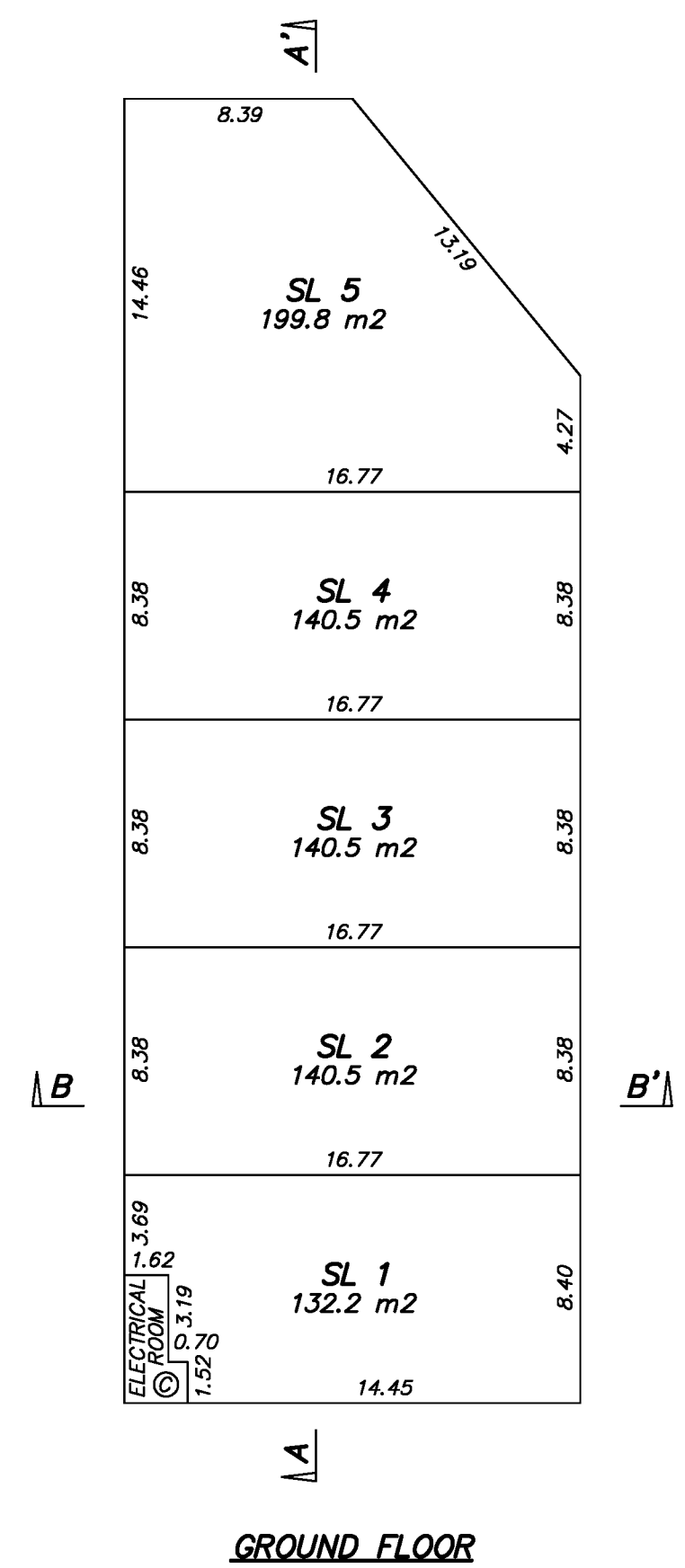
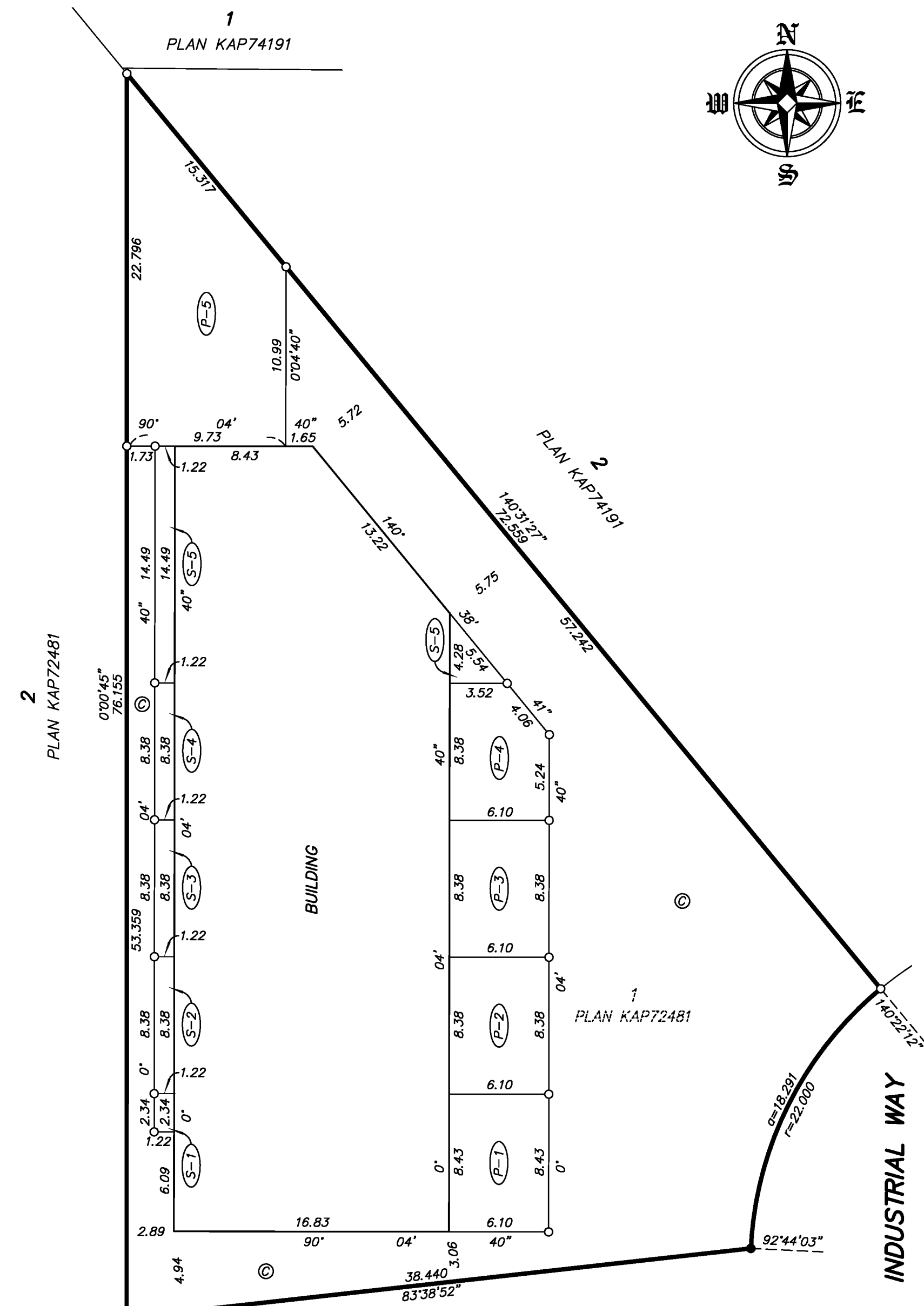
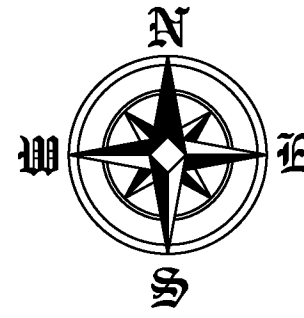
**BUILDING LOCATION, FLOOR PLAN & SECTIONS**

**STRATA PLAN EPS4984**



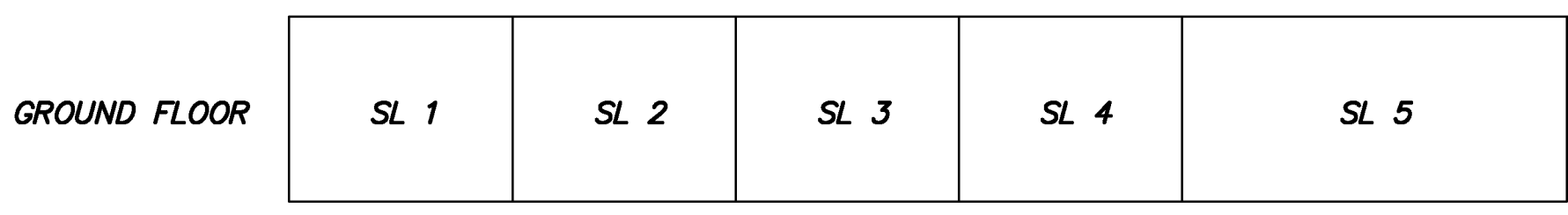
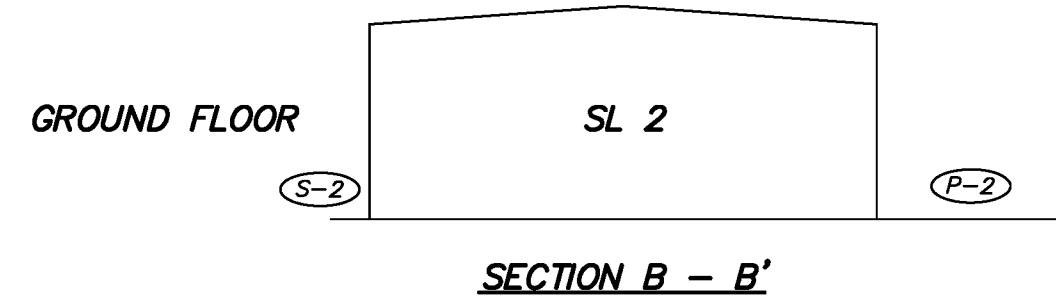
DISTANCES ARE IN METRES

THE INTENDED PLOT SIZE OF THIS PLAN IS 432mm IN WIDTH BY 560mm IN HEIGHT (C SIZE) WHEN PLOTTED AT A SCALE OF 1:250



**STONE CUTTER PLACE**  
**BUILDING LOCATION**

**INDUSTRIAL WAY**



**SECTION A - A'**

DARRYL J. MITCHELL, BCLS  
11th DAY OF MAY, 2018

**AXIS LAND SURVEYING LTD.**  
B.C. & CANADA LANDS SURVEYORS  
101, 32885 VENTURA AVENUE  
ABBOTSFORD, B.C. V2S 6A3  
T. 604-853-2700 F. 604-853-2710  
FILE : M 5460  
DWG : 5460-FS1