



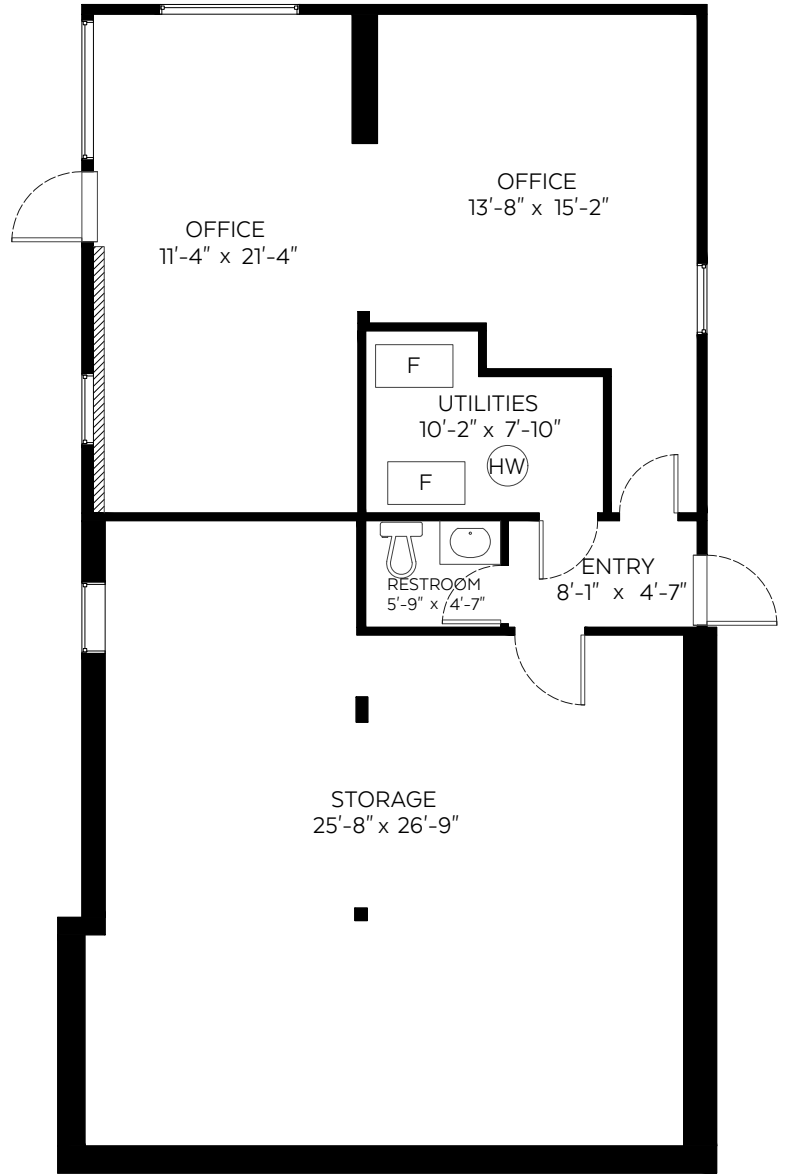
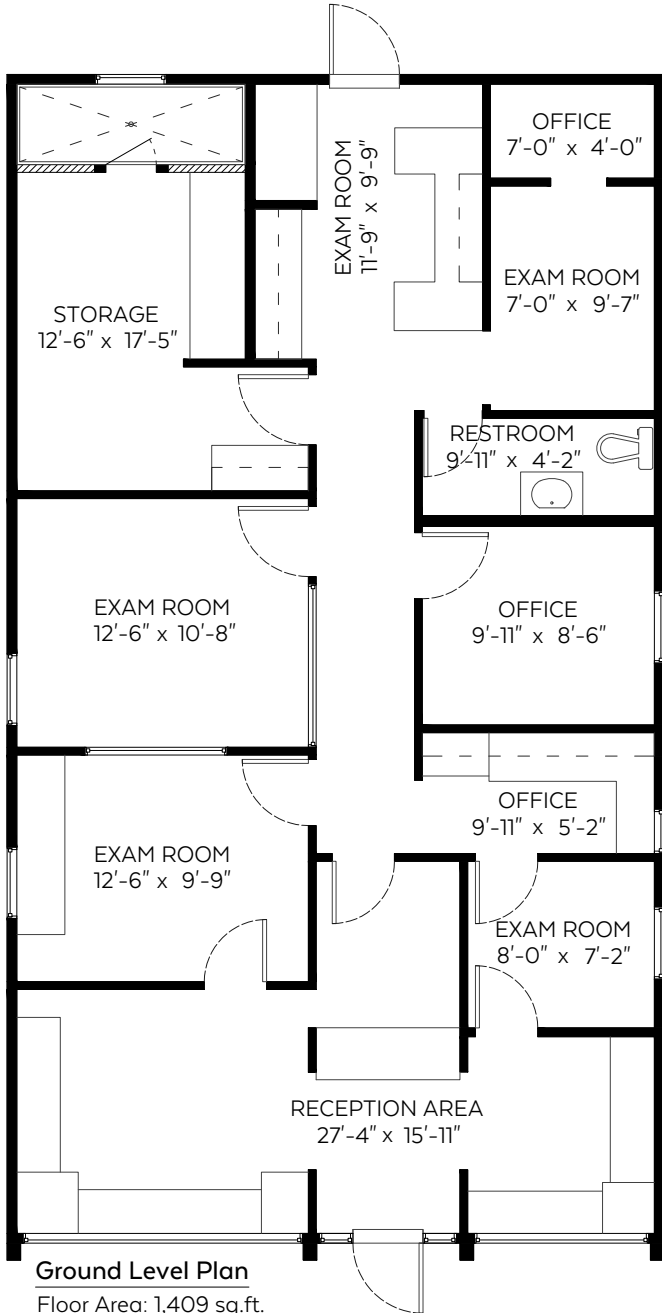
1512 56 Street,
Delta, B.C.

Ground Floor:	1,409 sq.ft.
Lower Floor:	1,362 sq.ft.
Total:	2,771 sq.ft.

NATALIE WALKER

PERSONAL REAL ESTATE CORPORATION

604.868.0028 | natalie@nataliewalker.ca



Valid Until: December 2, 2024

The floor plan is not suitable for architectural/construction and is covered under E&O. © Excelsior Measuring Inc. 2024. All rights reserved for Excelsior Measuring Inc. Users shall not publish and distribute such material (in whole or in part) and/or incorporate it in other works in any form.



NORTH

