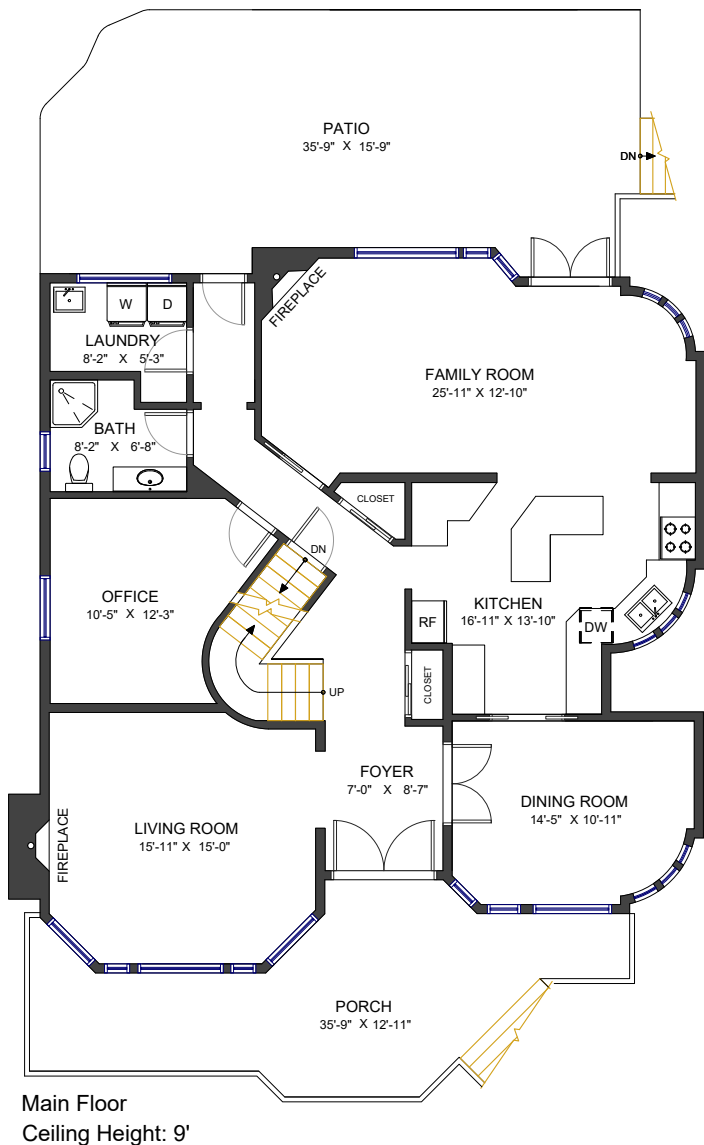
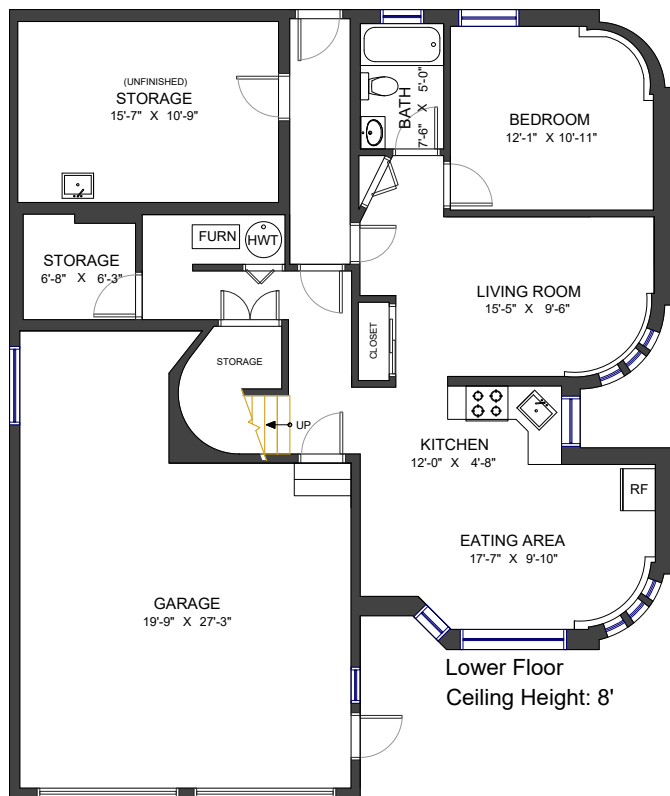
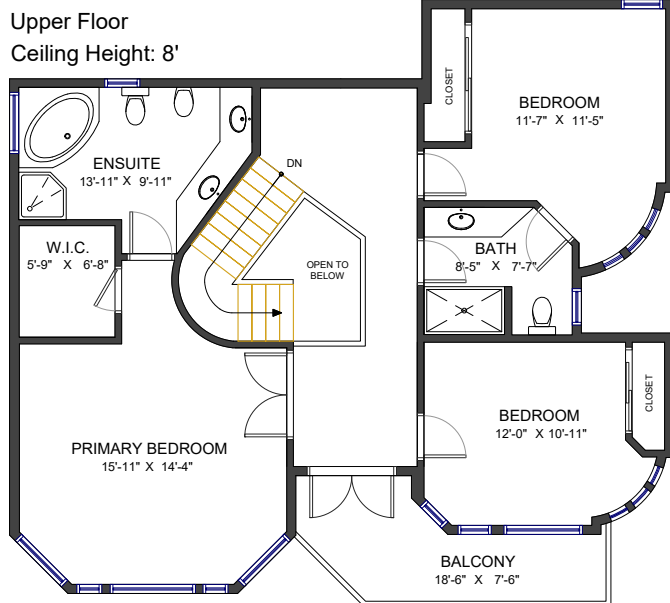


MAIN FLOOR	1,517 SF
UPPER FLOOR	1,095 SF
LOWER FLOOR	966 SF
LIVING AREA	3,578 SF
UNFINISHED AREA	184 SF
TOTAL AREA	3,762 SF

AUXILIARY AREA	1,396 SF
GARAGE	489 SF
PATIO	519 SF
BALCONY	99 SF
PORCH	289 SF



Valid Until: November 21, 2024

All dimensions are approximate and not suitable for architectural/construction use. This is for marketing purposes only. The measurements are approximate within +/- 2%, E&O insured. Total square footage might be kept consistent with strata plan. It might include unfinished area.