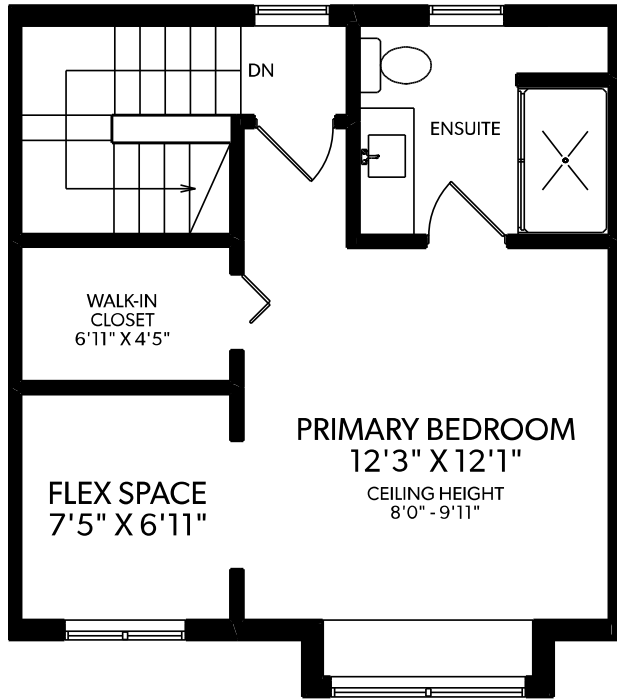


6-1075 LYNN VALLEY ROAD

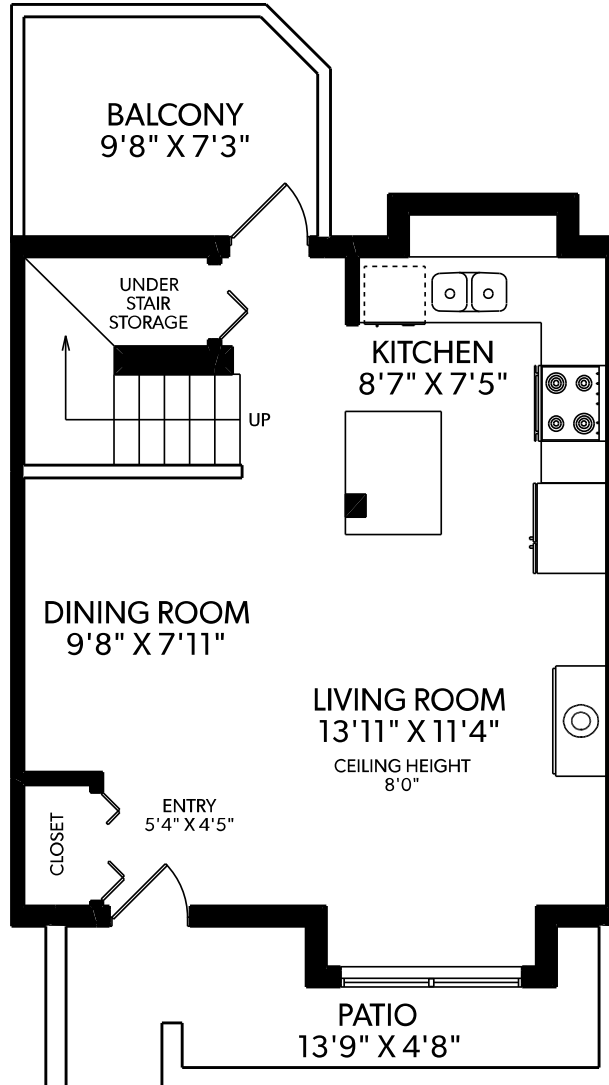


FLOOR	FINISHED	UNFINISHED	TOTAL	OTHER AREAS	
MAIN	481	0	481	BALCONY	78
UPPER	476	0	476		
TOP	439	0	439		
TOTAL	1396	0	1396		

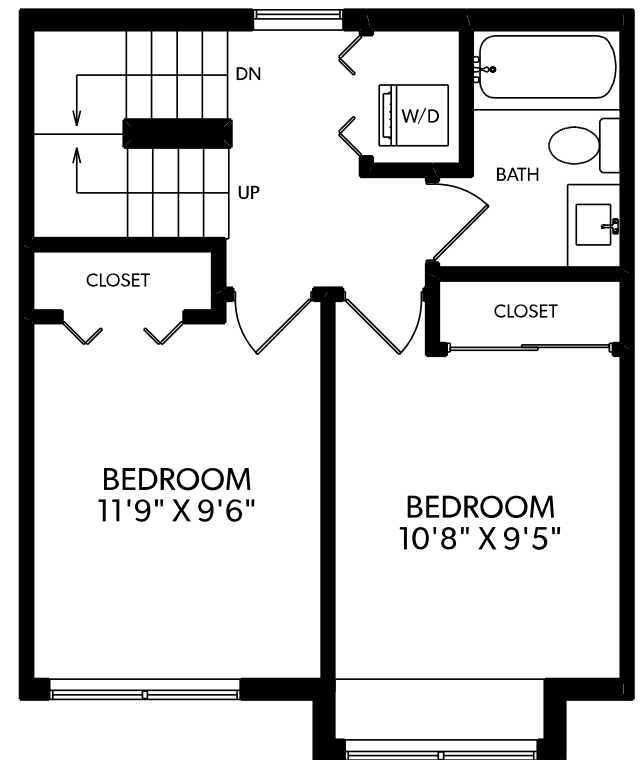
TOP FLOOR



MAIN FLOOR



UPPER FLOOR



OAKWYN REALTY

Document prepared for the exclusive use of Steve Hamer-Jackson* *PERSONAL REAL ESTATE CORPORATION

These floor plans are not suitable for construction purposes. Efforts have been made to represent dimensions accurately. Purchaser of the property to verify measurements if important. E&O Insured.



MEASURED 12/04/2023