

1600 LOOK OUT POINT

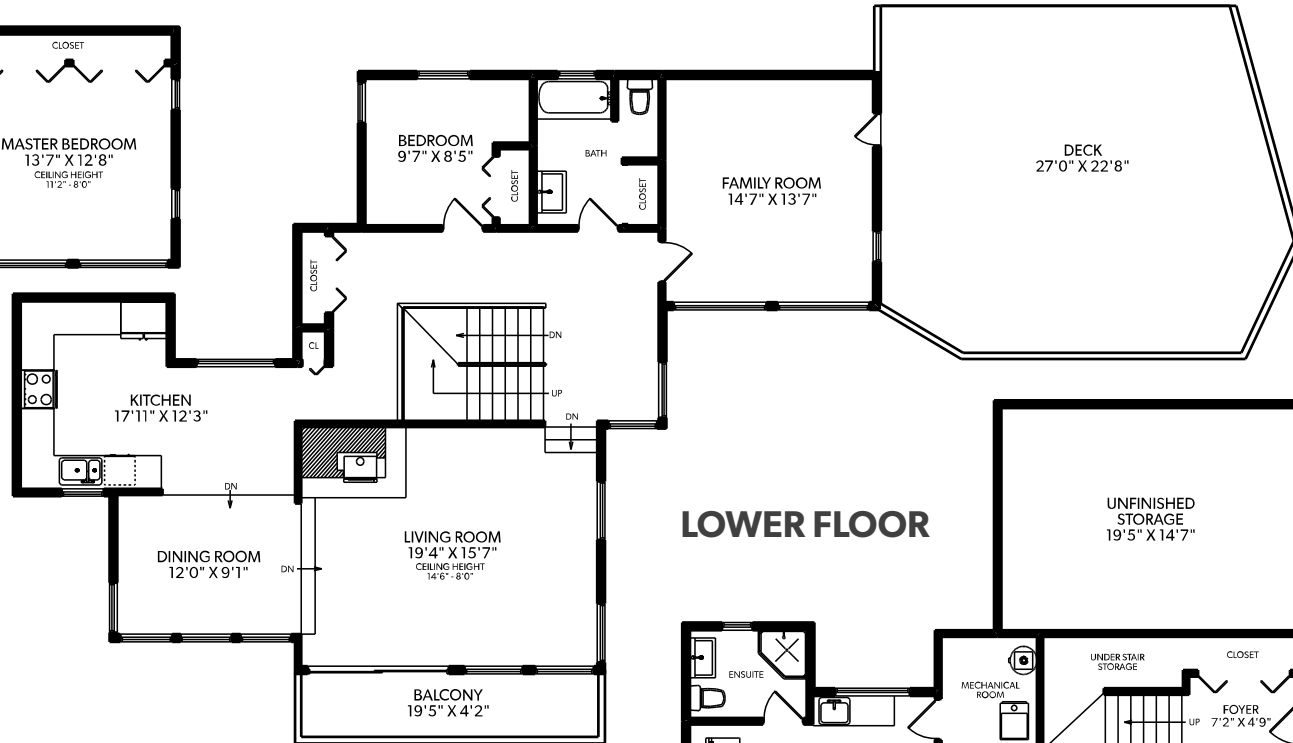
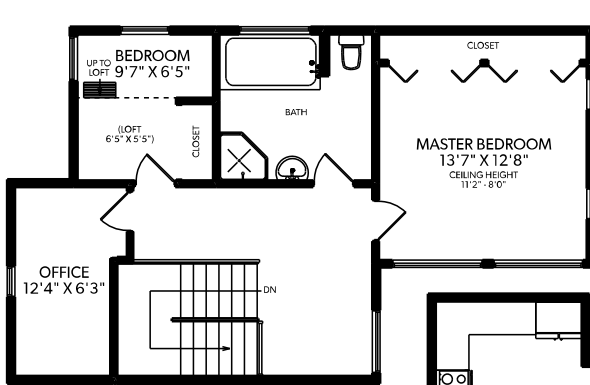
FLOOR	FINISHED	UNFINISHED	TOTAL
MAIN	1400	0	1400
UPPER	749	0	749
LOWER	827	0	827
TOTAL	2976	0	2976

OTHER AREAS	
DECK	559
BALCONY	92
STORAGE	441

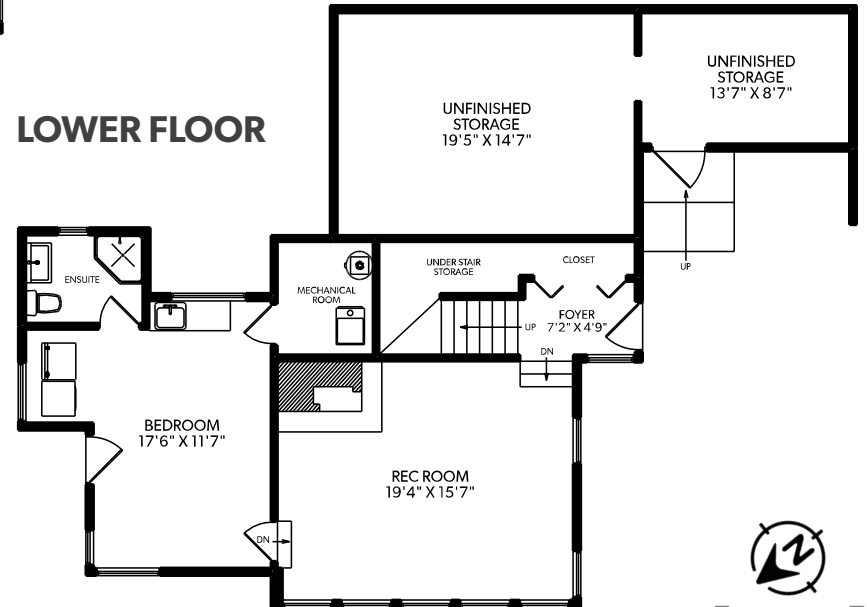


UPPER FLOOR

MAIN FLOOR



LOWER FLOOR



OAKWYN REALTY

Document prepared for the exclusive use of Steve Hamer-Jackson* *PERSONAL REAL ESTATE CORPORATION

These floor plans are not suitable for construction purposes. Efforts have been made to represent dimensions accurately. Purchaser of the property to verify measurements if important. E&O Insured.



GMS
FLOOR PLANS.CA

MEASURED 06/01/2021