

ROLAND LEWIS

PERSONAL REAL ESTATE CORPORATION

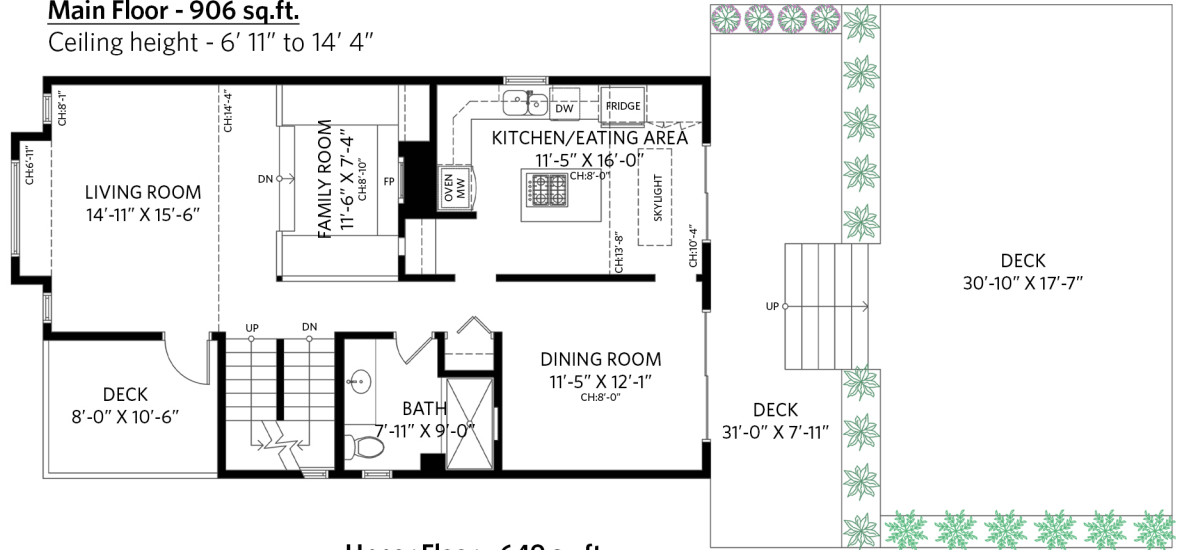
1933 Cliffwood Road, North Vancouver

3 bedrooms + den + 2 bathrooms

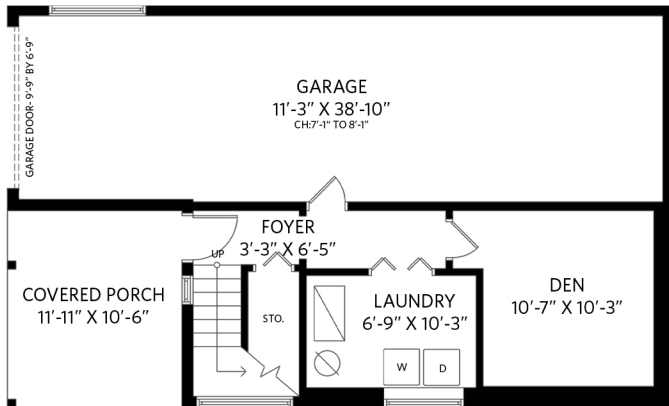
Lower Floor: 369 sq.ft.
 Main Floor: 906 sq.ft.
 Upper Floor: 649 sq.ft.
Total Interior: 1,924 sq.ft.

Attached Garage: 482 sq.ft.
 Exterior Living: 981 sq.ft.

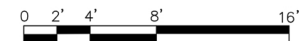
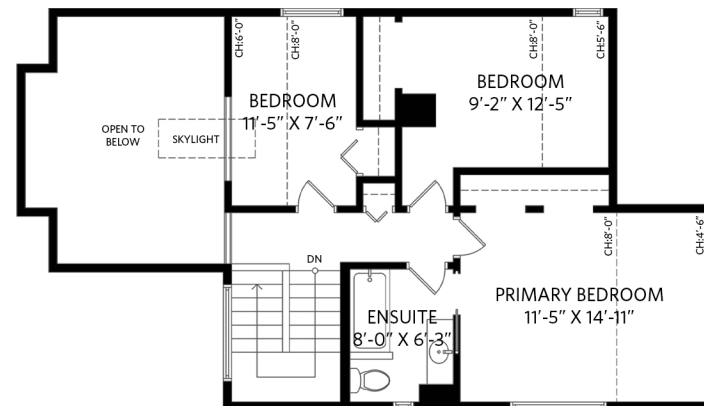
Main Floor - 906 sq.ft.
 Ceiling height - 6' 11" to 14' 4"



Lower Floor - 369 sq.ft.
 Ceiling height - 8' 0"



Upper Floor - 649 sq.ft.
 Ceiling height - 4' 6" to 8' 0"



THIS FLOORPLAN IS FOR ILLUSTRATION PURPOSES ONLY AND ALL DIMENSIONS SHOULD BE CONSIDERED APPROXIMATE