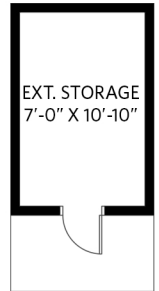


# ROLAND LEWIS

PERSONAL REAL ESTATE CORPORATION

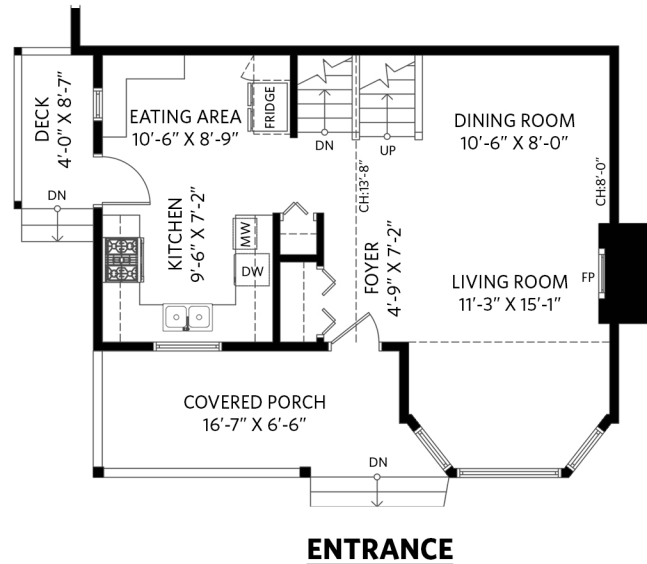
## 3450 Manning Place, North Vancouver

4 bedrooms + den + 3 bathrooms



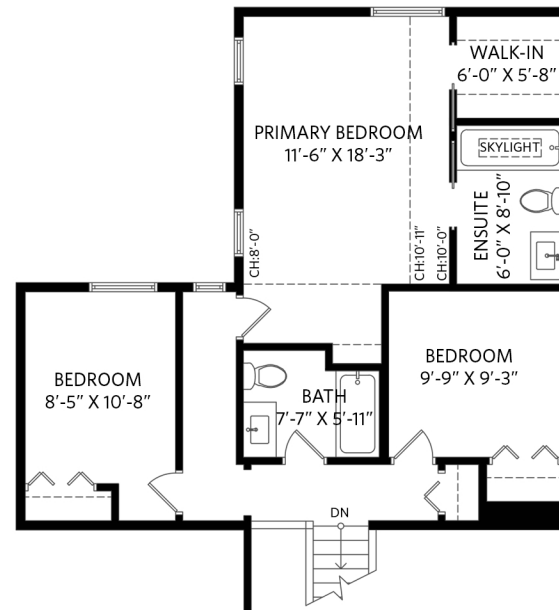
### Main Floor - 585 sq.ft.

Ceiling height - 8' 0" to 13' 8"



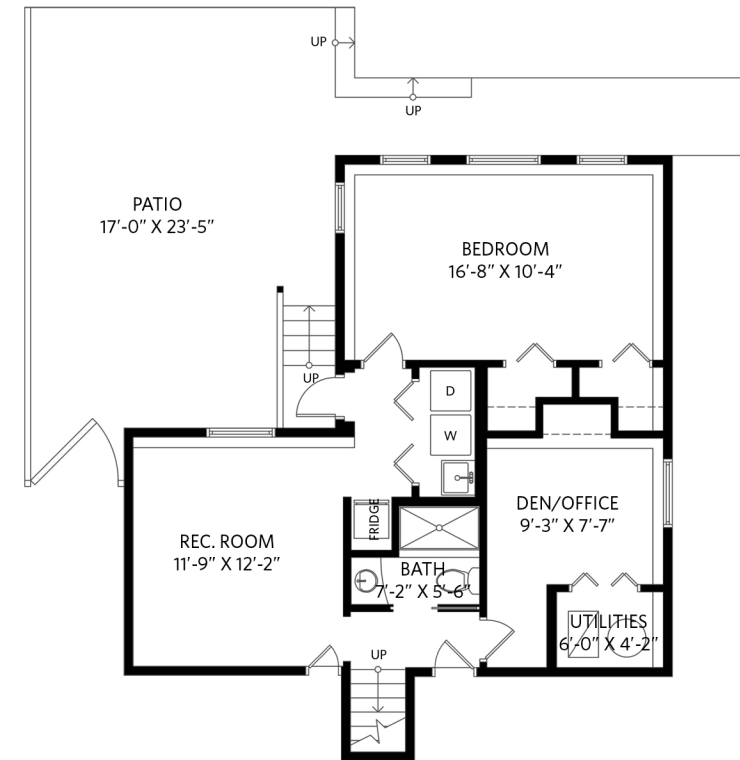
### Upper Floor - 718 sq.ft.

Ceiling height - 8' 0" to 10' 11"



### Lower Floor - 728 sq.ft.

Ceiling height - 8' 0"



Main Floor: 585 sq.ft.  
Upper Floor: 718 sq.ft.  
Lower Floor: 728 sq.ft.  
**Total Interior: 2,031 sq.ft.**

Exterior Living: 668 sq.ft.  
Exterior Storage: 95 sq.ft.

THIS FLOORPLAN IS FOR ILLUSTRATION PURPOSES ONLY AND ALL DIMENSIONS SHOULD BE CONSIDERED APPROXIMATE

