

# ROLAND LEWIS

PERSONAL REAL ESTATE CORPORATION

## 1160 WENDEL PLACE

3 bedrooms + 3 1/2 bathrooms

MAIN FLOOR

744 SQ.FT.

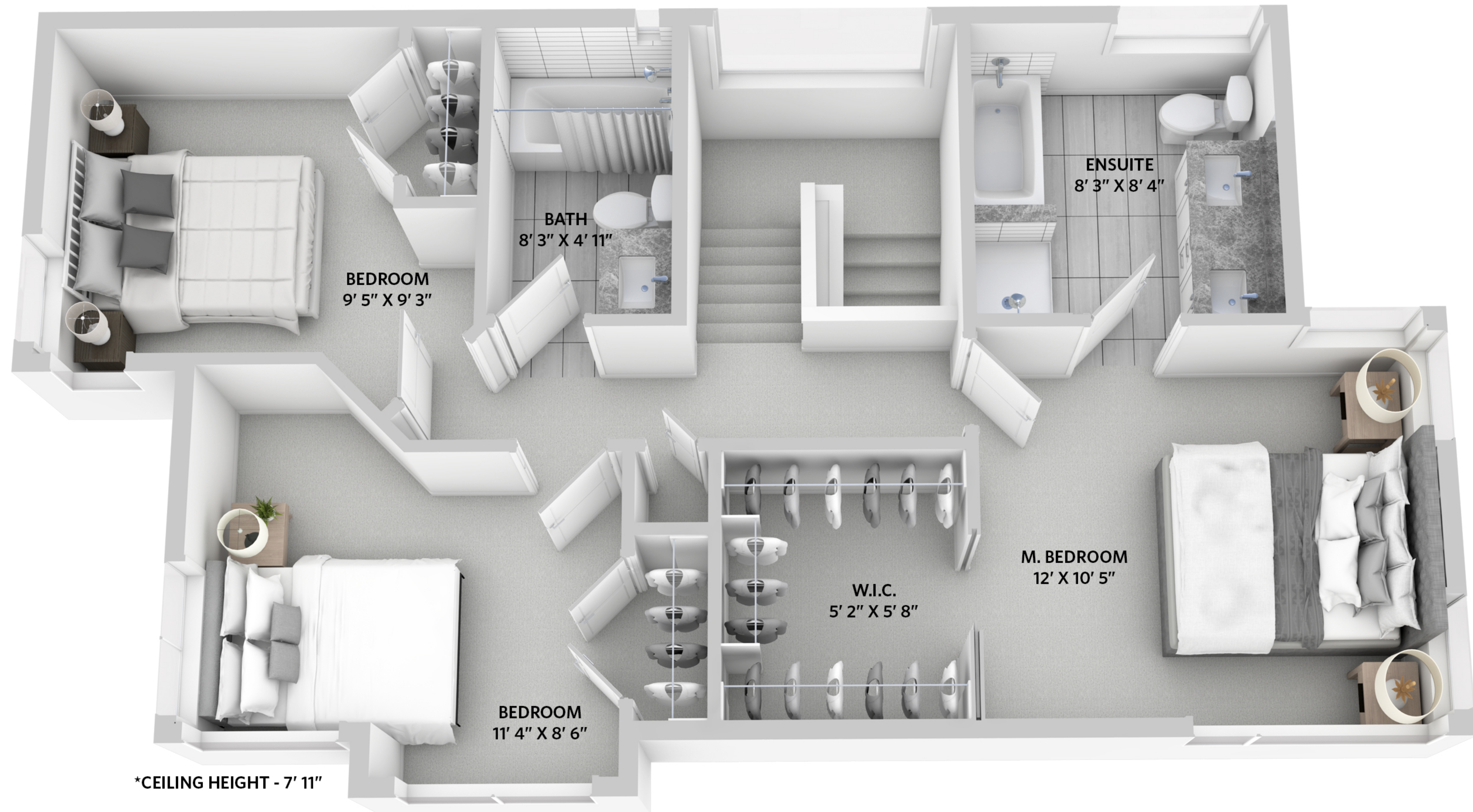


THIS FLOORPLAN IS FOR ILLUSTRATION PURPOSES ONLY AND ALL DIMENSIONS SHOULD BE CONSIDERED APPROXIMATE

# ROLAND LEWIS

PERSONAL REAL ESTATE CORPORATION

## UPPER FLOOR 698 SQ.FT.



THIS FLOORPLAN IS FOR ILLUSTRATION PURPOSES ONLY AND ALL DIMENSIONS SHOULD BE CONSIDERED APPROXIMATE

# ROLAND LEWIS

PERSONAL REAL ESTATE CORPORATION

## LOWER FLOOR

747 SQ.FT.



LOWER FLOOR: 747 SQ.FT.

MAIN FLOOR: 744 SQ.FT.

UPPER FLOOR: 698 SQ.FT.

**TOTAL INTERIOR: 2,189 SQ.FT.**

GARAGE: 262 SQ.FT.

OUTDOOR LIVING: 305 SQ.FT.

THIS FLOORPLAN IS FOR ILLUSTRATION PURPOSES ONLY AND ALL DIMENSIONS SHOULD BE CONSIDERED APPROXIMATE