

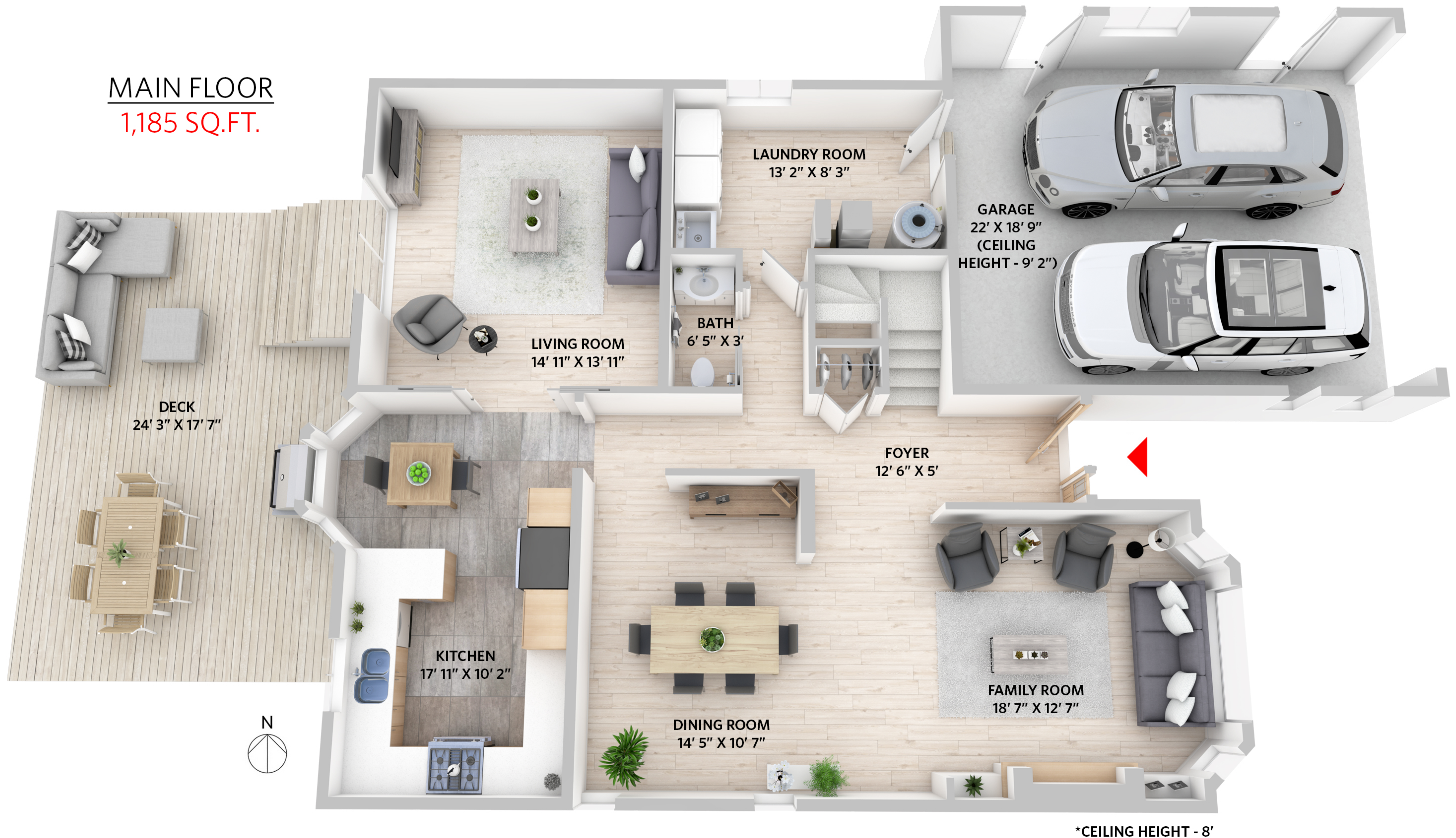
ROLAND LEWIS

PERSONAL REAL ESTATE CORPORATION

829 NICOLUM COURT

3 bedrooms + 2 1/2 bathrooms

MAIN FLOOR
1,185 SQ.FT.



*CEILING HEIGHT - 8'

THIS FLOORPLAN IS FOR ILLUSTRATION PURPOSES ONLY AND ALL DIMENSIONS SHOULD BE CONSIDERED APPROXIMATE

ROLAND LEWIS

PERSONAL REAL ESTATE CORPORATION



UPPER FLOOR
890 SQ.FT.

MAIN FLOOR:
UPPER FLOOR:
TOTAL:

1,185 SQ.FT.
890 SQ.FT.
2,075 SQ.FT.

GARAGE: 443 SQ.FT.
OUTDOOR LIVING: 464 SQ.FT.

THIS FLOORPLAN IS FOR ILLUSTRATION PURPOSES ONLY AND ALL DIMENSIONS SHOULD BE CONSIDERED APPROXIMATE