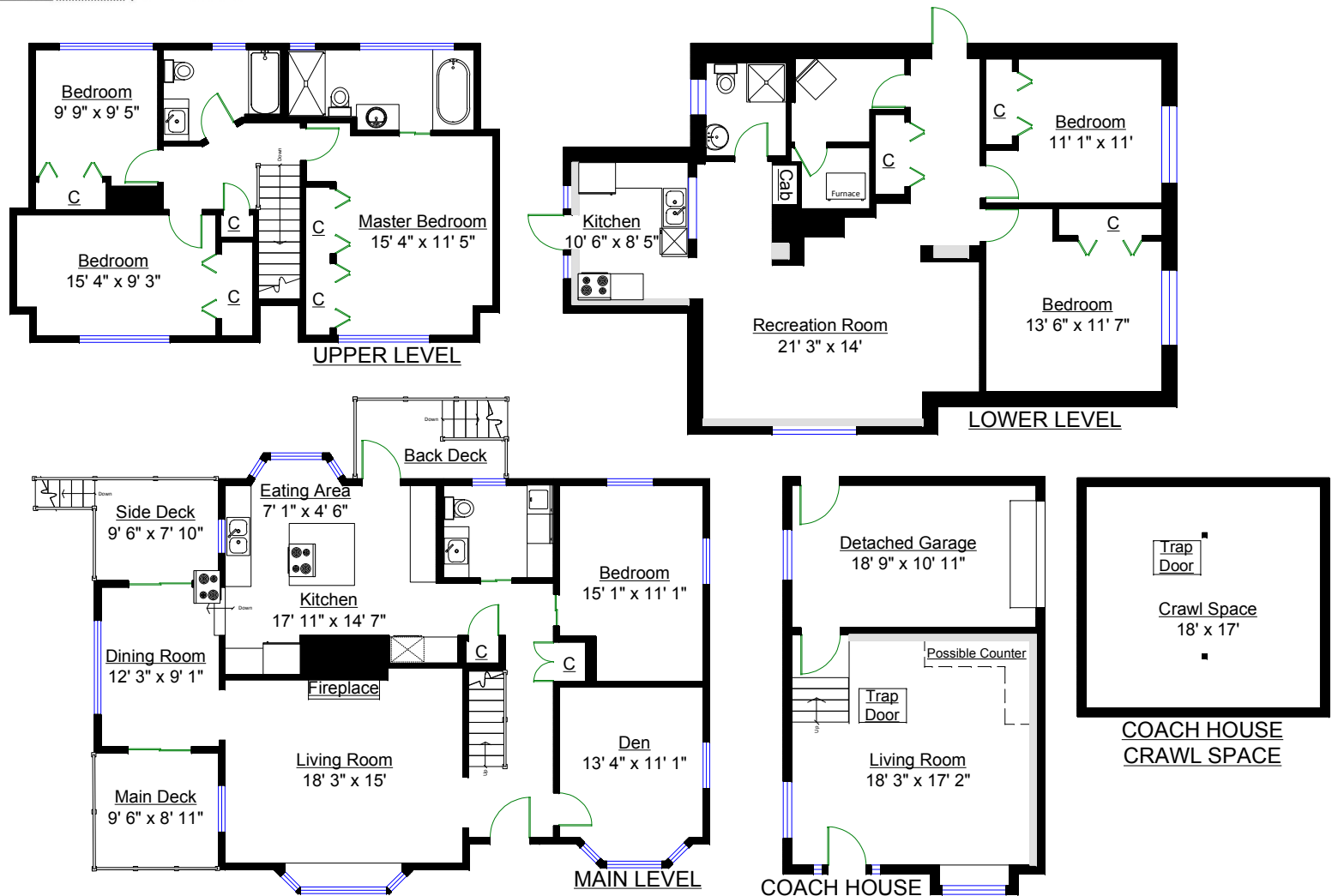


1909 Queensbury Avenue, North Vancouver



Totals**

Main Level:	1,245 sq. ft.
Upper Level:	818 sq. ft.
Lower Level:	1,207 sq. ft.
TOTAL:	3,269 sq. ft.

Other Areas

Detached Garage:	232 sq. ft.
Coach House:	379 sq. ft.
Crawl Space:	353 sq. ft.
Main Deck:	85 sq. ft.
Side Deck:	85 sq. ft.
Rear Deck:	72 sq. ft.
TOTAL:	1,206 sq. ft.