

#12-1073 Lynn Valley Road, North Vancouver

2 bedrooms + 1 1/2 bathrooms



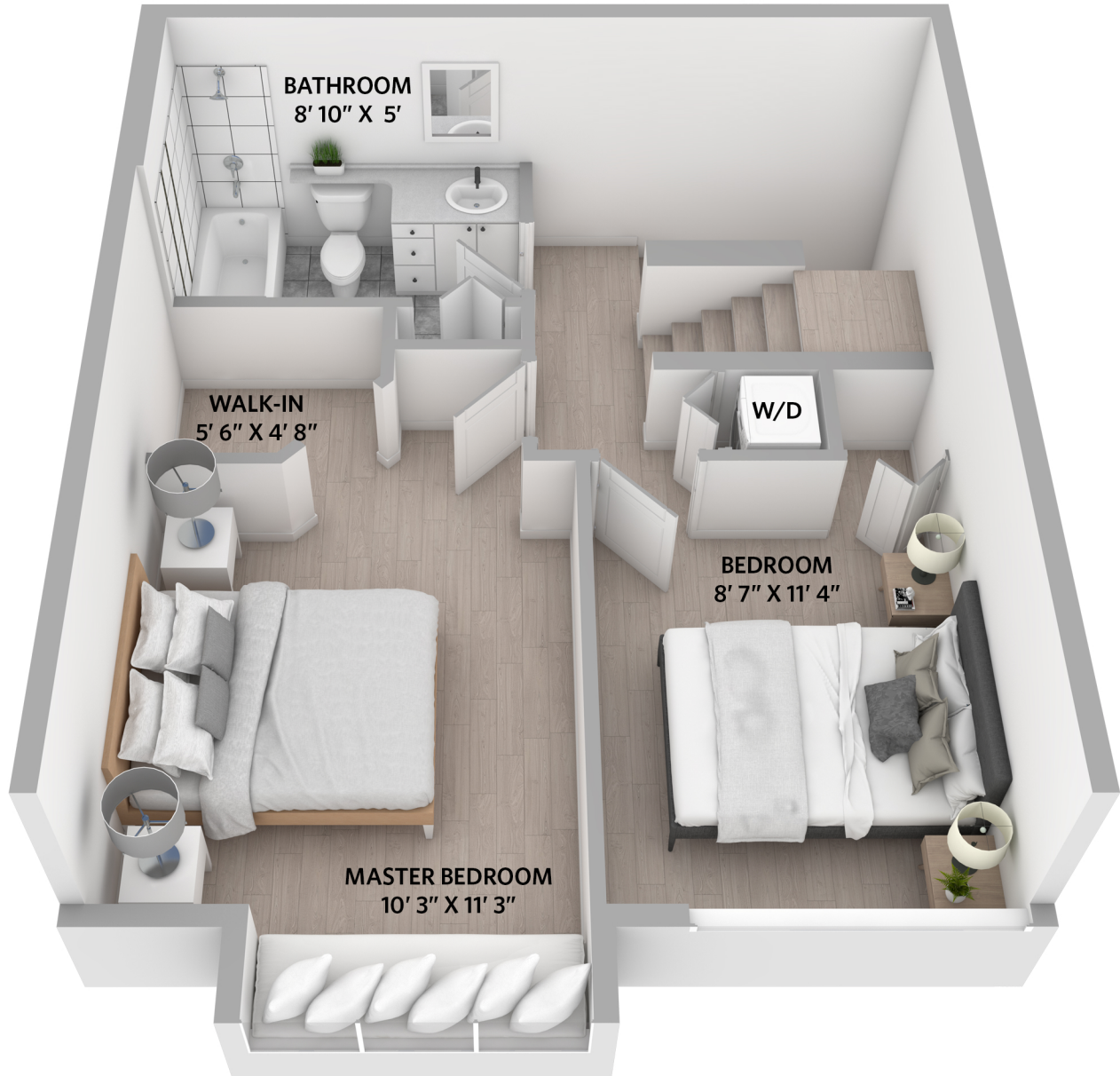
THIS FLOORPLAN IS FOR ILLUSTRATION PURPOSES ONLY AND ALL DIMENSIONS SHOULD BE CONSIDERED APPROXIMATE

ROLAND LEWIS

PERSONAL REAL ESTATE CORPORATION

Upper Floor - 458 sq.ft.

Ceiling height - 8' 0"



THIS FLOORPLAN IS FOR ILLUSTRATION PURPOSES ONLY AND ALL DIMENSIONS SHOULD BE CONSIDERED APPROXIMATE

ROLAND LEWIS

PERSONAL REAL ESTATE CORPORATION

Top Floor - 97 sq.ft.

Ceiling height - 8' 0"



Main Floor: 458 sq.ft.

Upper Floor: 458 sq.ft.

Top Floor: 97 sq.ft.

Total Interior: 1,013 sq.ft.

Total Exterior: 337 sq.ft.

THIS FLOORPLAN IS FOR ILLUSTRATION PURPOSES ONLY AND ALL DIMENSIONS SHOULD BE CONSIDERED APPROXIMATE

#12-1073 Lynn Valley Road, North Vancouver

2 bedrooms + 1 1/2 bathrooms

Top Floor - 97 sq.ft.
Ceiling height - 8' 0"



Upper Floor - 458 sq.ft.
Ceiling height - 8' 0"



Main Floor - 458 sq.ft.
Ceiling height - 8' 0"



Total Interior: 1,013 sq.ft.
Total Exterior: 337 sq.ft.

THIS FLOORPLAN IS FOR ILLUSTRATION PURPOSES ONLY AND ALL DIMENSIONS SHOULD BE CONSIDERED APPROXIMATE