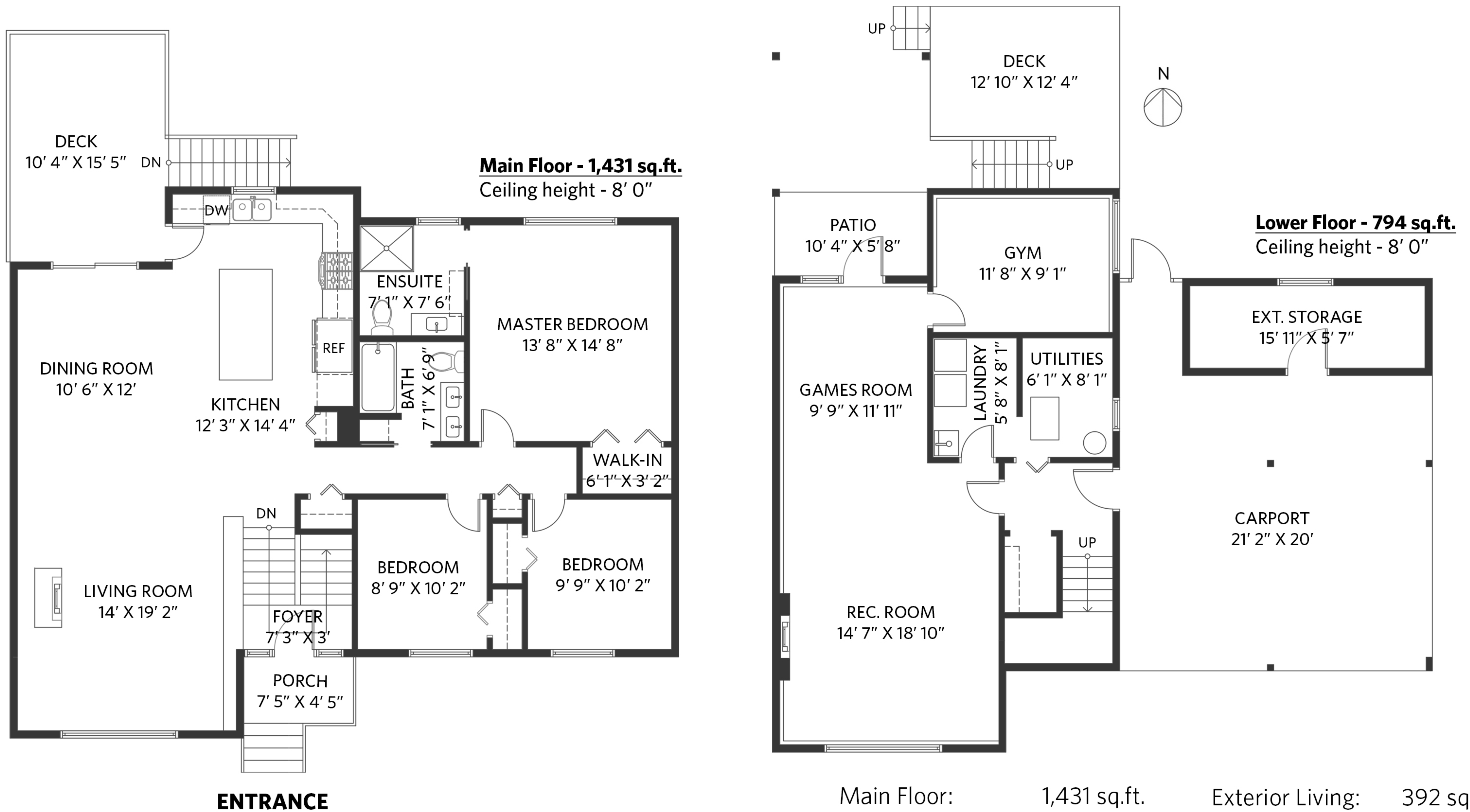


ROLAND LEWIS

PERSONAL REAL ESTATE CORPORATION

1662 Westover Road, North Vancouver

3 bedrooms + 2 bathrooms



Main Floor: 1,431 sq.ft.
 Lower Floor: 794 sq.ft.
Total Interior: 2,225 sq.ft.

Exterior Living: 392 sq.ft.
 Carport: 450 sq.ft.
 Ext. Storage: 111 sq.ft.

THIS FLOORPLAN IS FOR ILLUSTRATION PURPOSES ONLY AND ALL DIMENSIONS SHOULD BE CONSIDERED APPROXIMATE