

ROLAND LEWIS

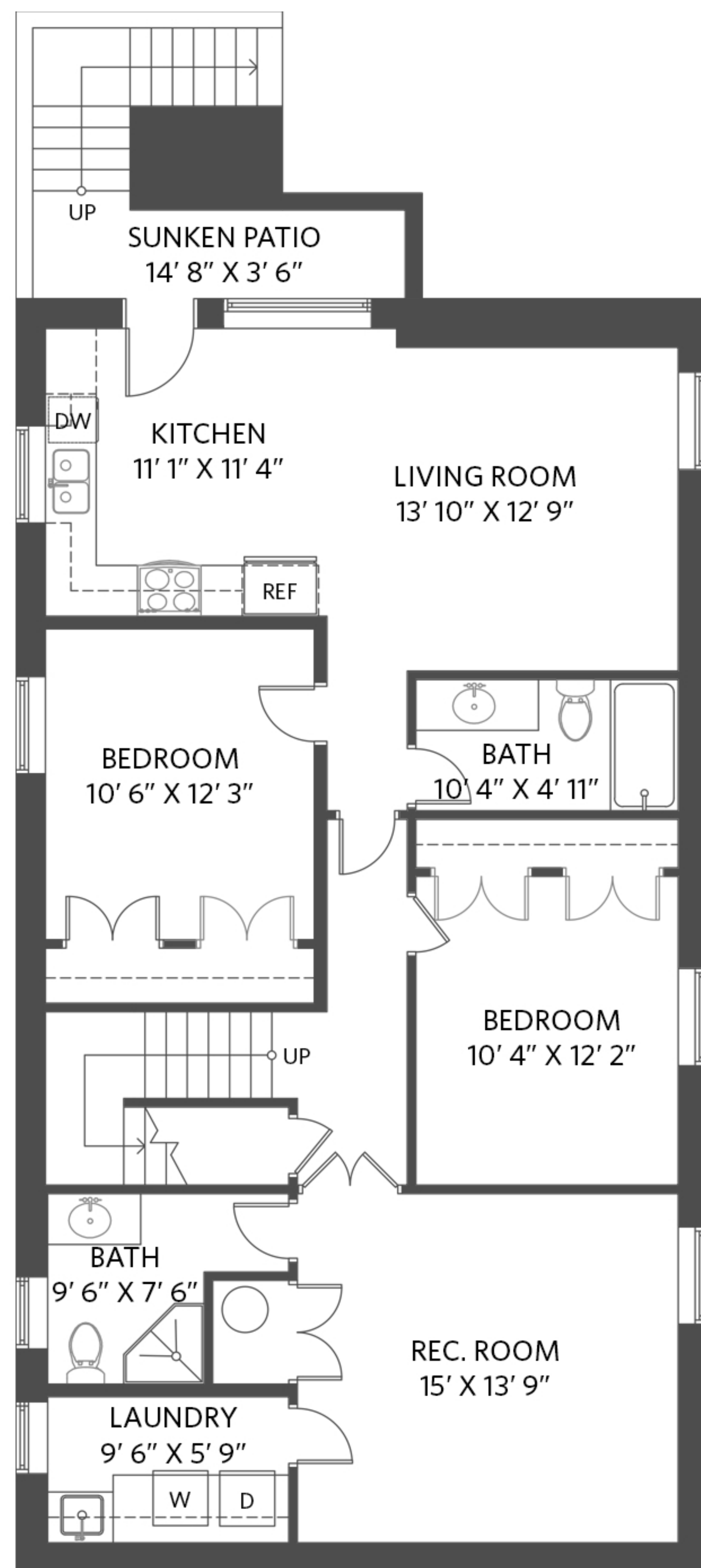
PERSONAL REAL ESTATE CORPORATION

1622 Hope Road, North Vancouver

5 bedrooms + den + 4 1/2 bathrooms

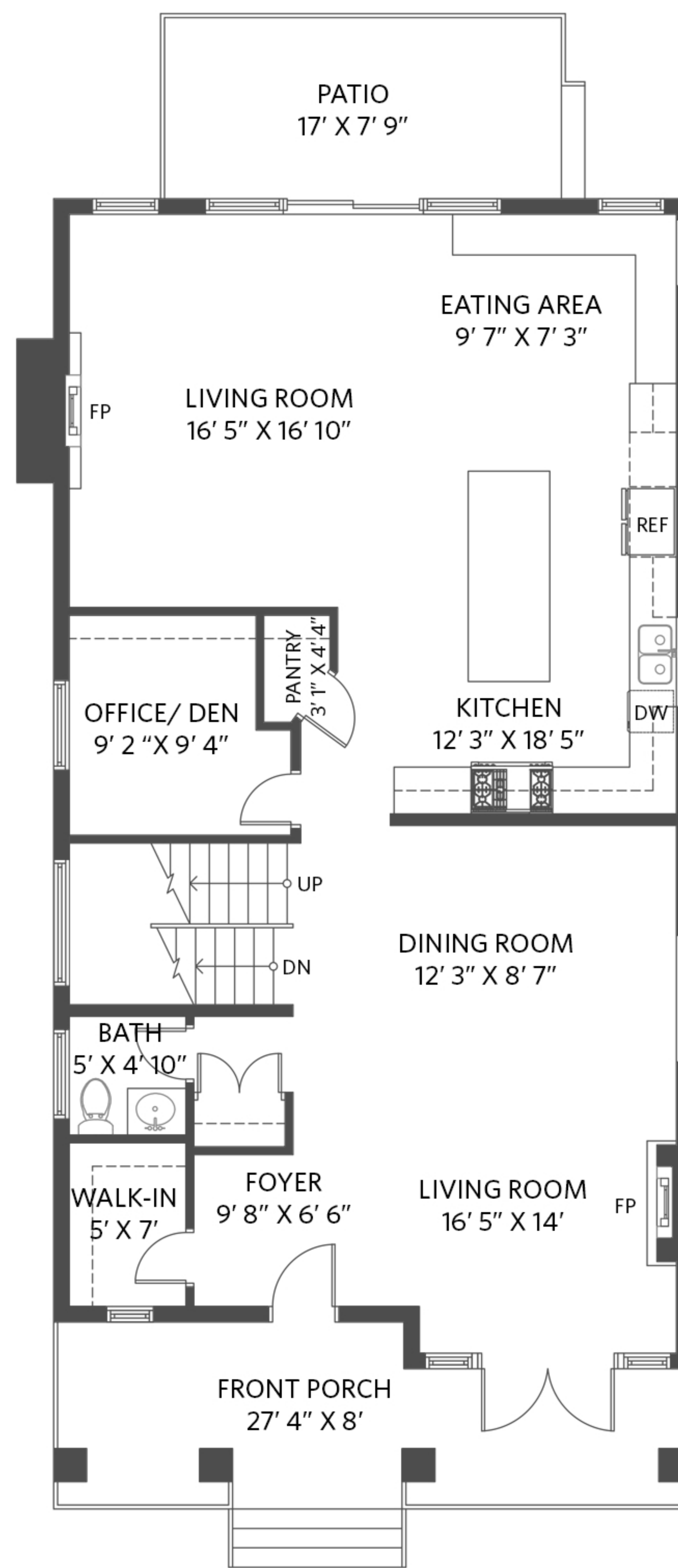
Lower Floor - 1,367 sq.ft.

Ceiling height - 9' 0"



Main Floor - 1,349 sq.ft.

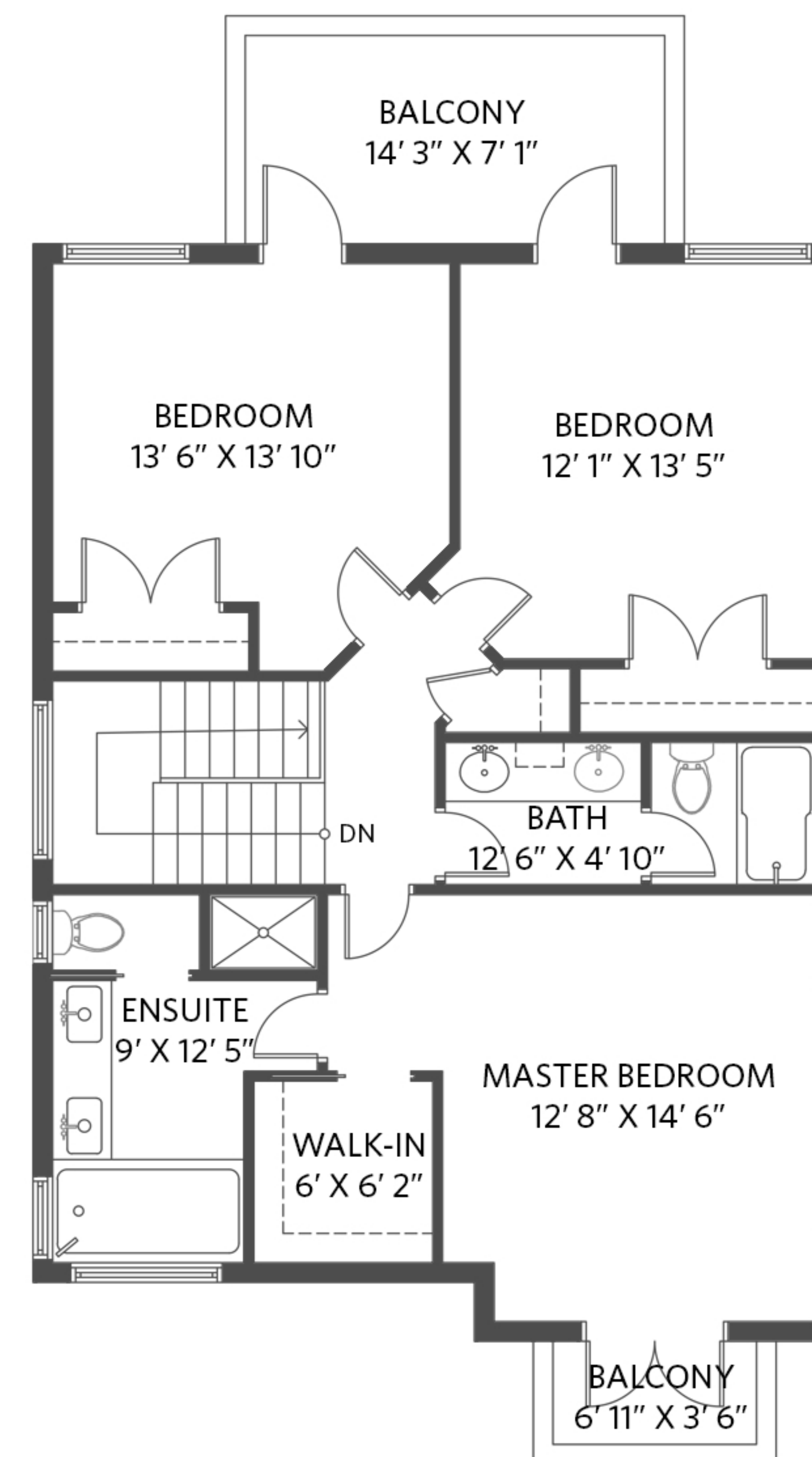
Ceiling height - 9' 0"



ENTRANCE

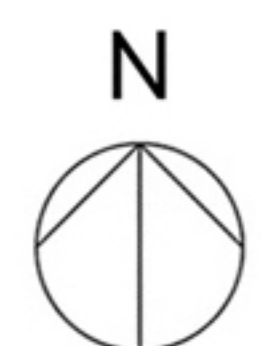
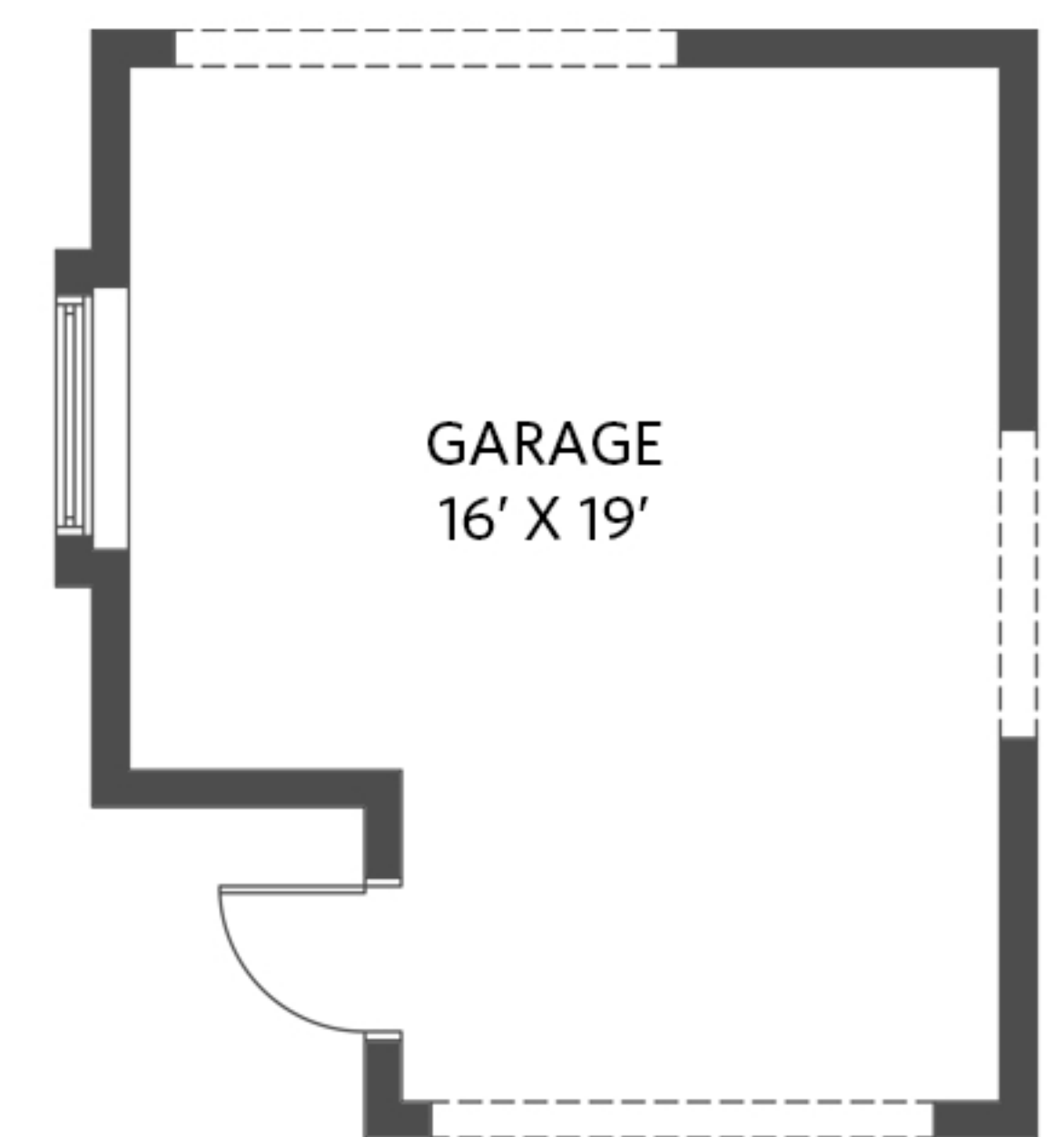
Upper Floor - 985 sq.ft.

Ceiling height - 8' 0"



Garage - 326 sq.ft.

Ceiling height - 8' 5"



Lower Floor:	1,367 sq.ft.
Main Floor:	1,349 sq.ft.
Upper Floor:	985 sq.ft.
Total Interior:	3,701 sq.ft.

Garage:	326 sq.ft.
Exterior Living:	532 sq.ft.

THIS FLOORPLAN IS FOR ILLUSTRATION PURPOSES ONLY AND ALL DIMENSIONS SHOULD BE CONSIDERED APPROXIMATE