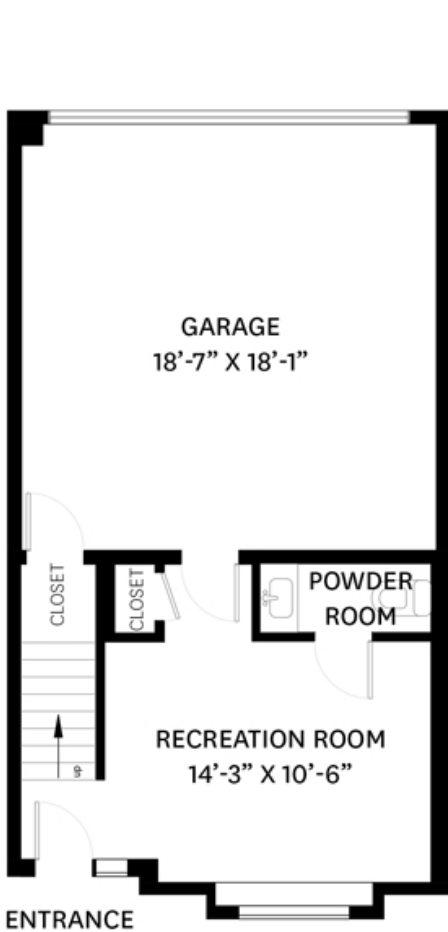


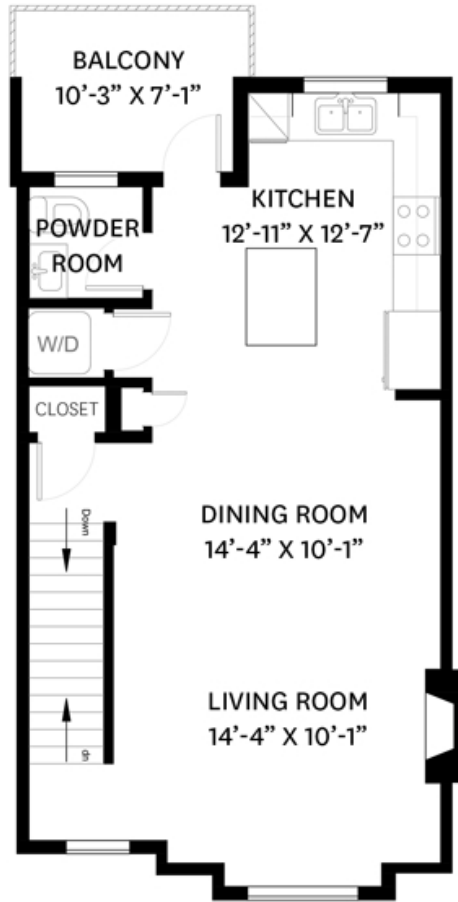
2 - 2321 RINDALL AVENUE, PORT COQUITLAM, BC

LOWER FLOOR TOTAL: 295 SQ. FT.
 MAIN FLOOR TOTAL: 632 SQ. FT.
 UPPER FLOOR TOTAL: 660 SQ. FT.
TOTAL: 1,587 SQ. FT.

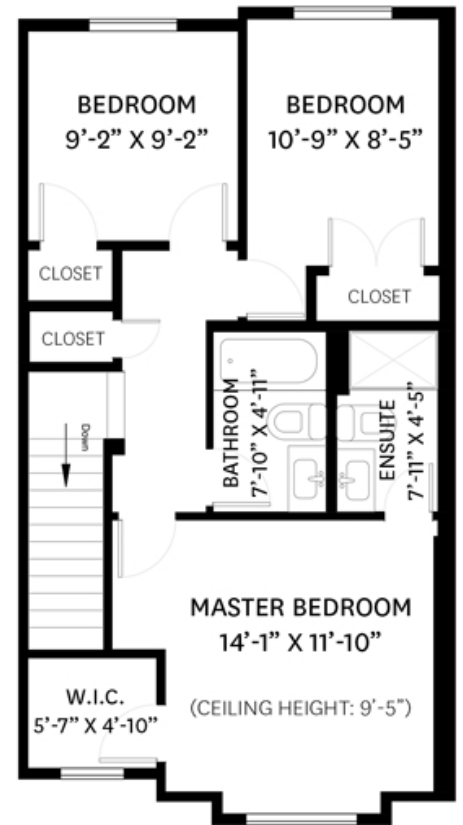
GARAGE: 373 SQ. FT.
 BALCONY: 71 SQ. FT.



LOWER FLOOR PLAN
 Ceiling Height: 7'-11"



MAIN FLOOR PLAN
 Ceiling Height: 8'-11"



UPPER FLOOR PLAN
 Ceiling Height: 7'-11"



Adam Chahl PREC*
 778.385.6141
 adam@chahl.com

OAKWYN REALTY

*PERSONAL REAL ESTATE CORPORATION. THE FLOOR PLAN ILLUSTRATION IS NOT SUITABLE FOR CONSTRUCTION/ARCHITECTURAL PURPOSES. MEASUREMENTS ARE APPROXIMATE AND MAY NOT BE TO SCALE. E&O INSURED.

floor plan designed by ishot.ca Enterprises Inc.
 604.368.7979 ishot.ca