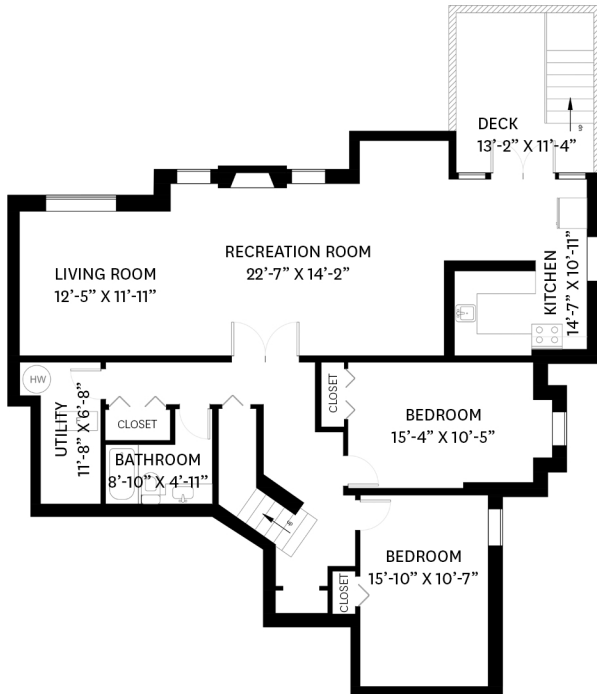


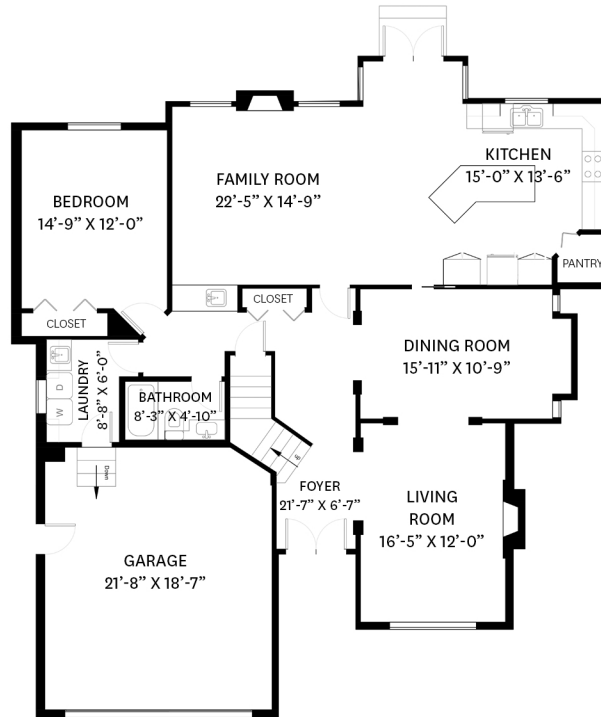
16224 - 110A AVENUE, SURREY, BC

LOWER FLOOR TOTAL: 1,592 SQ. FT.
 MAIN FLOOR TOTAL: 1,613 SQ. FT.
 UPPER FLOOR TOTAL: 1,381 SQ. FT.
TOTAL: 4,586 SQ. FT.

DECK: 113 SQ. FT.
 GARAGE: 437 SQ. FT.



LOWER FLOOR PLAN
 Ceiling Height: 8'-0"



MAIN FLOOR PLAN
 Ceiling Height: 8'-11"
 Ceiling Height: 11'-11" (Living Room)
 Ceiling Height: 17'-10" (Foyer and Family Room)



UPPER FLOOR PLAN
 Ceiling Height: 8'-0"



Adam Chahl PREC*
 778.385.6141
 adam@chahl.com

*PERSONAL REAL ESTATE CORPORATION. THE FLOOR PLAN ILLUSTRATION IS NOT SUITABLE FOR CONSTRUCTION/ARCHITECTURAL PURPOSES. MEASUREMENTS ARE APPROXIMATE AND MAY NOT BE TO SCALE. E&O INSURED.

floor plan designed by ishot.ca Enterprises Inc.
 604.368.7979 ishot.ca