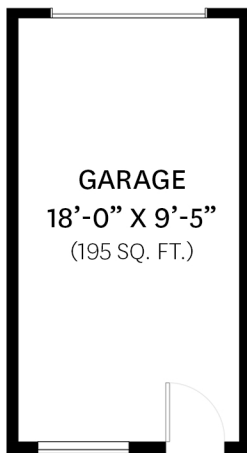


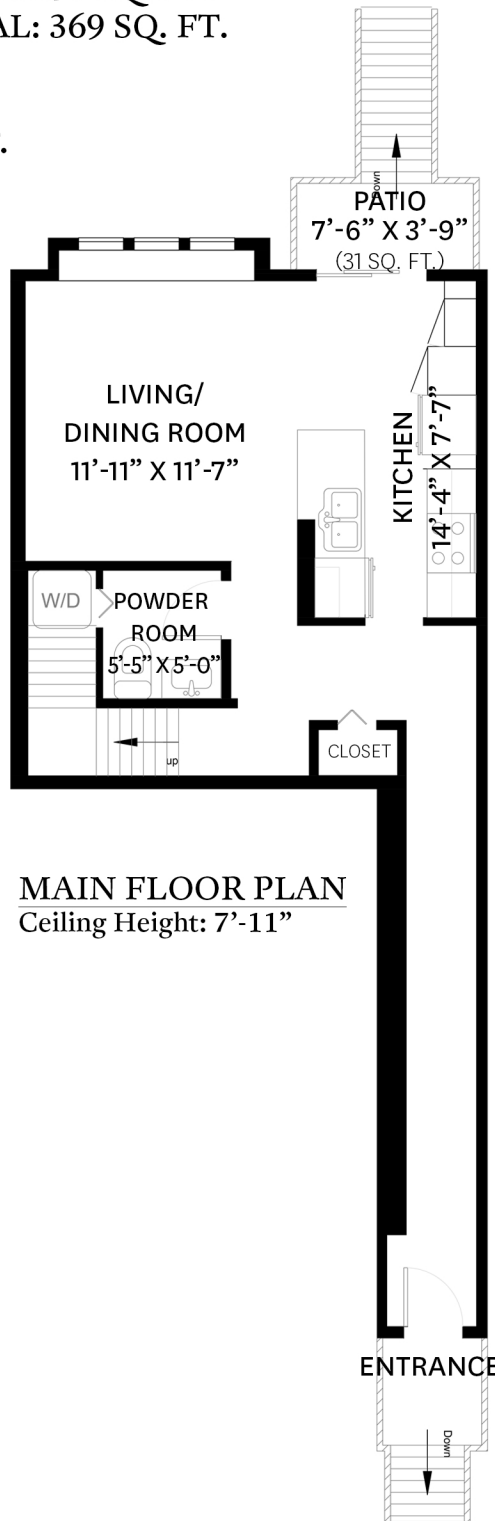
643 EAST PENDER STREET, VANCOUVER, BC

MAIN FLOOR TOTAL: 570 SQ. FT.
 UPPER FLOOR TOTAL: 369 SQ. FT.
 TOTAL: 939 SQ. FT.

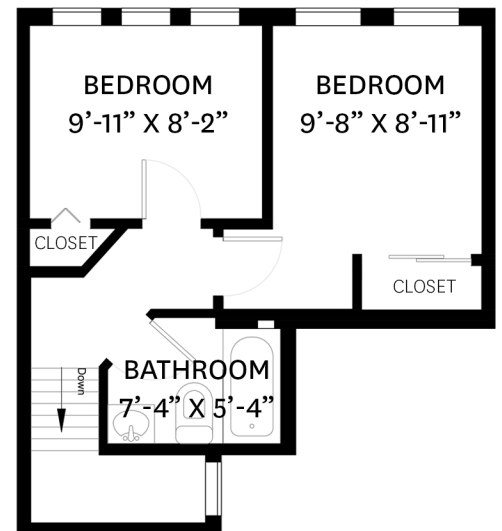
GARAGE: 195 SQ. FT.
 PATIO: 31 SQ. FT.



GARAGE FLOOR PLAN
 Ceiling Height: 7'-10"



MAIN FLOOR PLAN
 Ceiling Height: 7'-11"



UPPER FLOOR PLAN
 Ceiling Height: 7'-11"



Adam Chahl PREC*
 778.385.6141
 adam@chahl.com

floor plan designed by ishot.ca Enterprises Inc.
 604.368.7979 ishot.ca