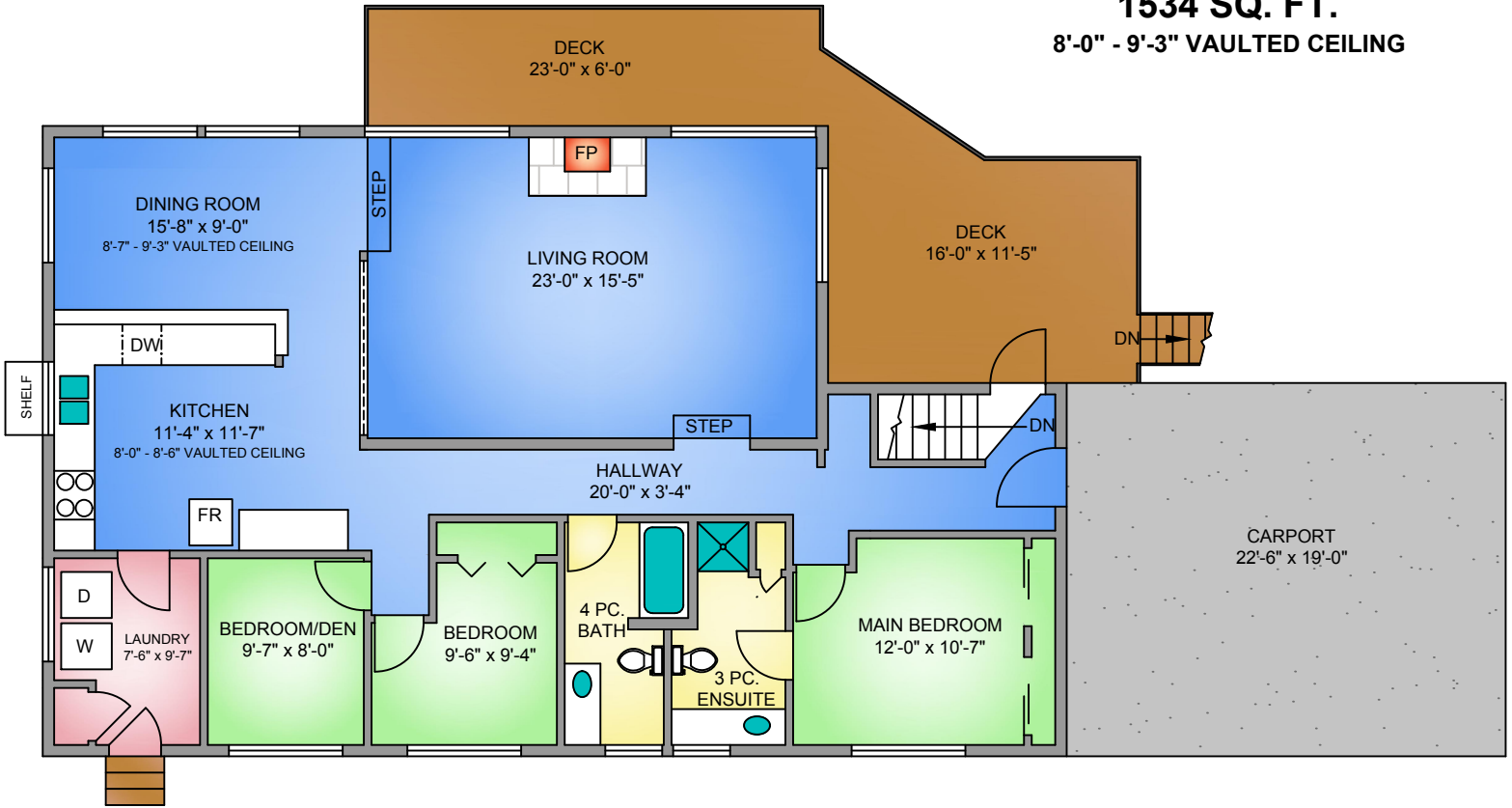


MAIN FLOOR

1534 SQ. FT.

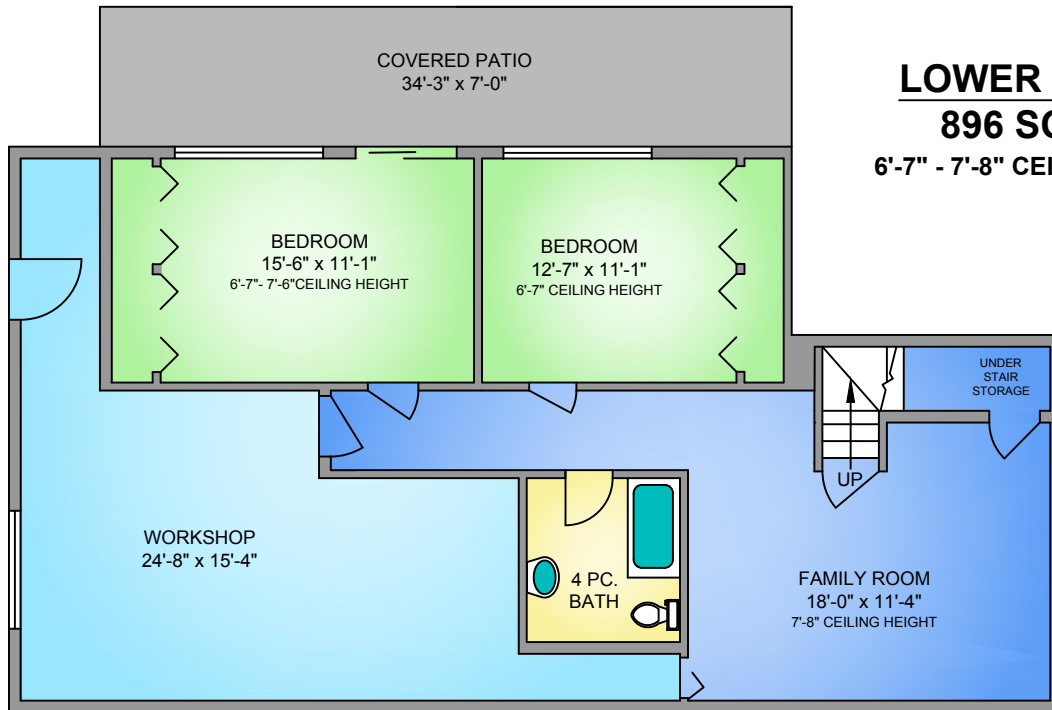
8'-0" - 9'-3" VAULTED CEILING



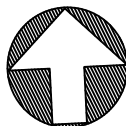
LOWER FLOOR

896 SQ. FT.

6'-7" - 7'-8" CEILING HEIGHT



NORTH



679 BAY ROAD | MILL BAY, BC

OCTOBER 8, 2020

PREPARED FOR THE EXCLUSIVE USE OF DAN JOHNSON.
PLANS MAY NOT BE 100% ACCURATE, IF CRITICAL BUYER TO VERIFY.

FLOOR	TOTAL	AREA (SQ. FT.)		
		FINISHED	UNFINISHED	DECK / PATIO
MAIN	1534	1534	-	343
LOWER	1331	896	435	236
TOTAL	2865	2430	435	579